

The Béthanie

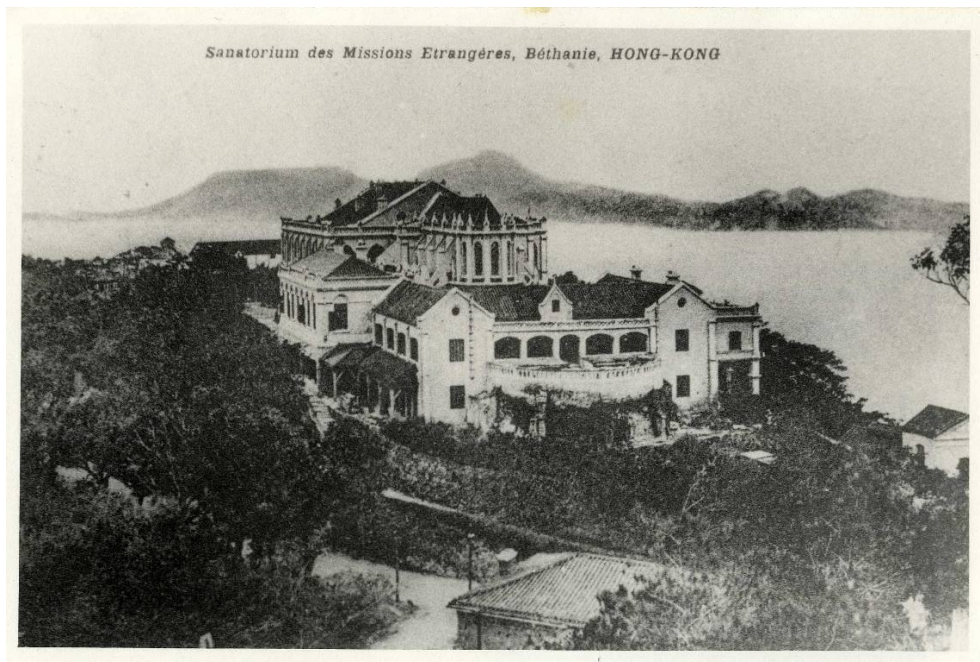


Photo taken around 1900-1910 showing the north elevation of the Béthanie

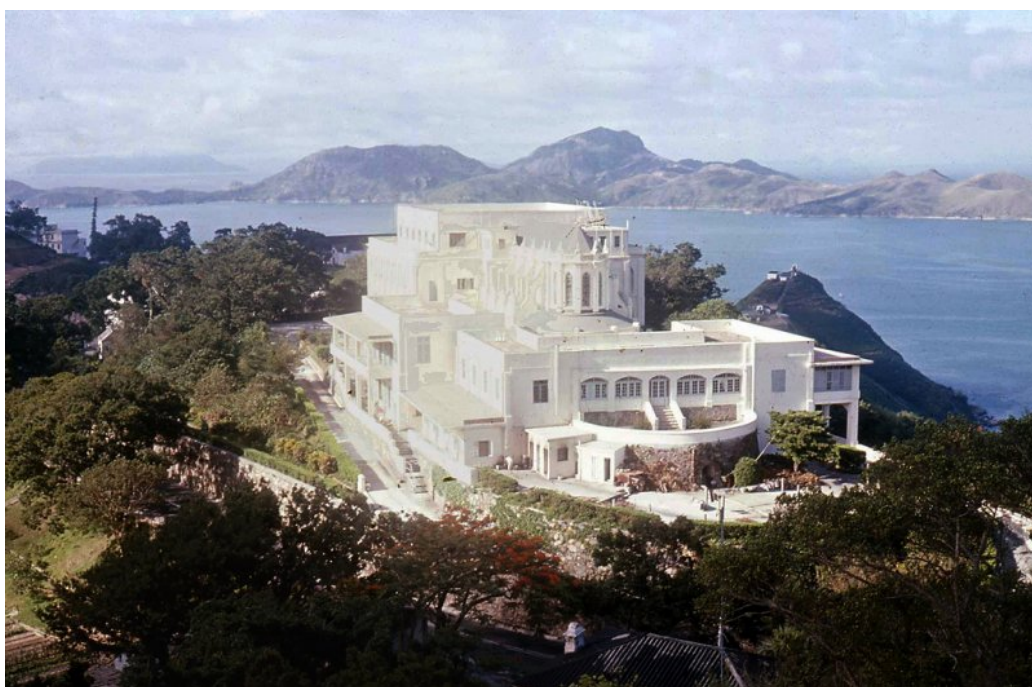


Photo of the Béthanie taken in 1964



Photo taken in 2003 before restoration



Photo taken in 2006 after restoration



View showing the south elevation of the Béthanie with a Gothic porch (added in the 1920s)



Verandah on the 1st floor decorated with the preserved pattern tiles on its flooring

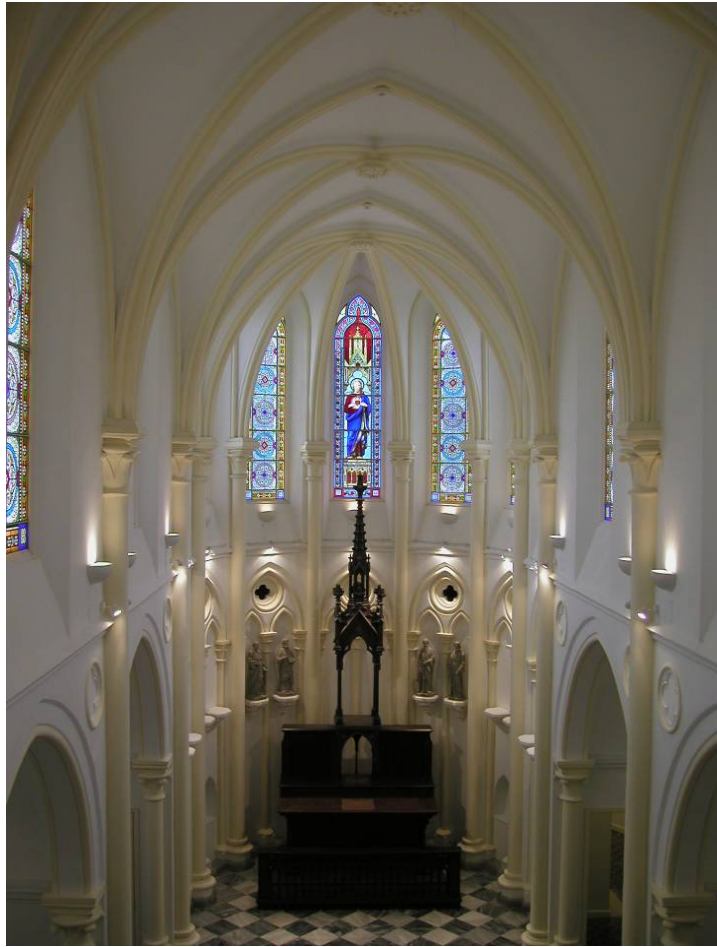
Latin quotation, “*Domine, ecce, quem amas infirmatur*”
(English: Lord, the one whom you love is sick)
from St. John’s Gospel



Main Entrance with the Béthanie motto over the granite lintel and the symbol of the Missions Étrangères “ME” entwined about an elongated cross on top of the ornamental ironwork grille to the doors



Exterior of the Neo-gothic chapel with flying buttresses on the exterior and sanatorium block behind



The ribbed and vaulted dome of the chapel supported on slender Gothic style columns



The restored stained glass window in the chapel, namely the Blessed Virgin Mary