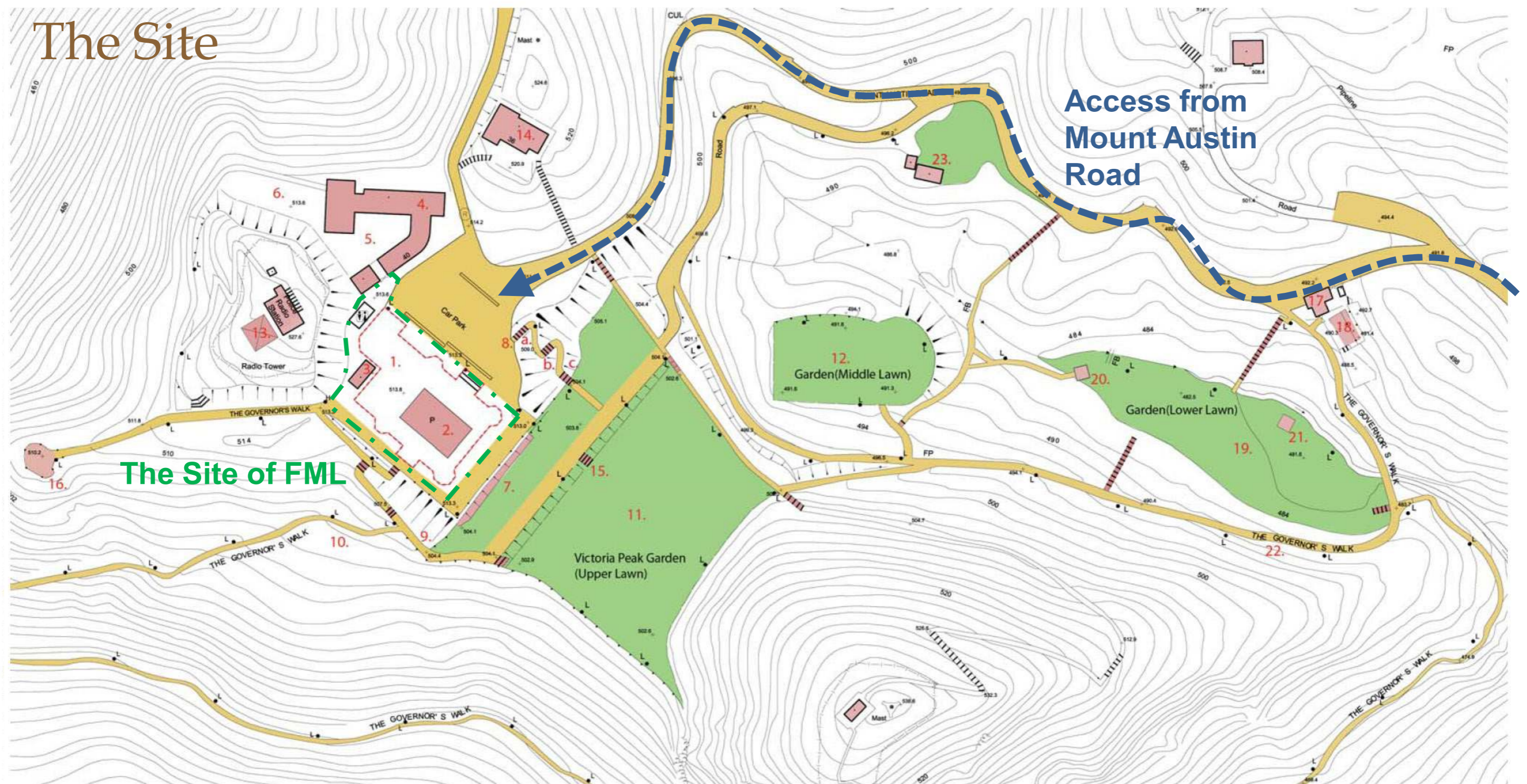


An architectural rendering of a modern building, identified as Annex C. The building features a long, low profile with a flat roof and a series of white columns supporting the structure. Large glass windows are visible, showing an interior with a staircase. The building is situated on a wide, open deck with a floor made of parallel wooden slats. A low metal railing runs along the edge of the deck. The sky is a uniform light gray, suggesting an overcast day. The overall style is minimalist and contemporary.

Annex C The Concept Design

The Site



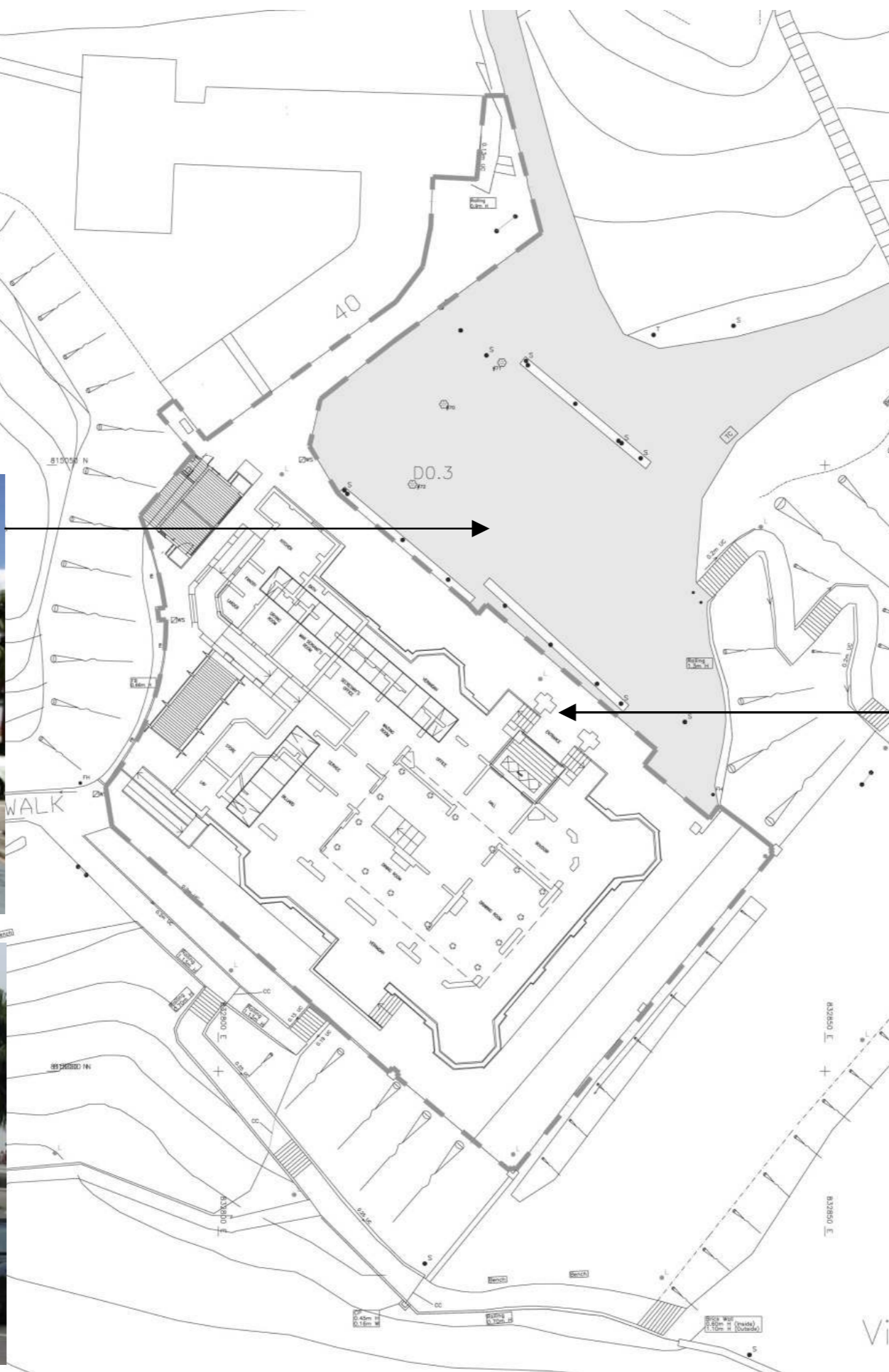
Legend

- | | | |
|--|---------------------------------------|-------------------------|
| 1. Foundation of Former Mountain Lodge | 7. Retaining wall | 17. Gate Lodge |
| 2. Pavilion by the former Urban Council | 8. Zigzag Footpath Steps | 18. Terrace |
| 3. Kiosk | 9. Circulation (Footpath) | 19. Garden (Lower Lawn) |
| 4. 40 Mount Austin Road | 10. Ruins of Mountain Lodge | 20. Rotunda |
| 5. Foundation of former servant quarter - site A | 11. Victoria Peak Garden (Upper Lawn) | 21. Gazebo |
| 6. Foundation of former servant quarter - site B | 12. Garden (Middle Lawn) | 22. Governor's Walk |
| | 13. Radio tower | 23. Government Store |
| | 14. 36 Mount Austin Road | |
| | 15. Stone Steps | |
| | 16. Circular Viewing Platform | |

10m 20m 50m



The Site



The Site



The Site



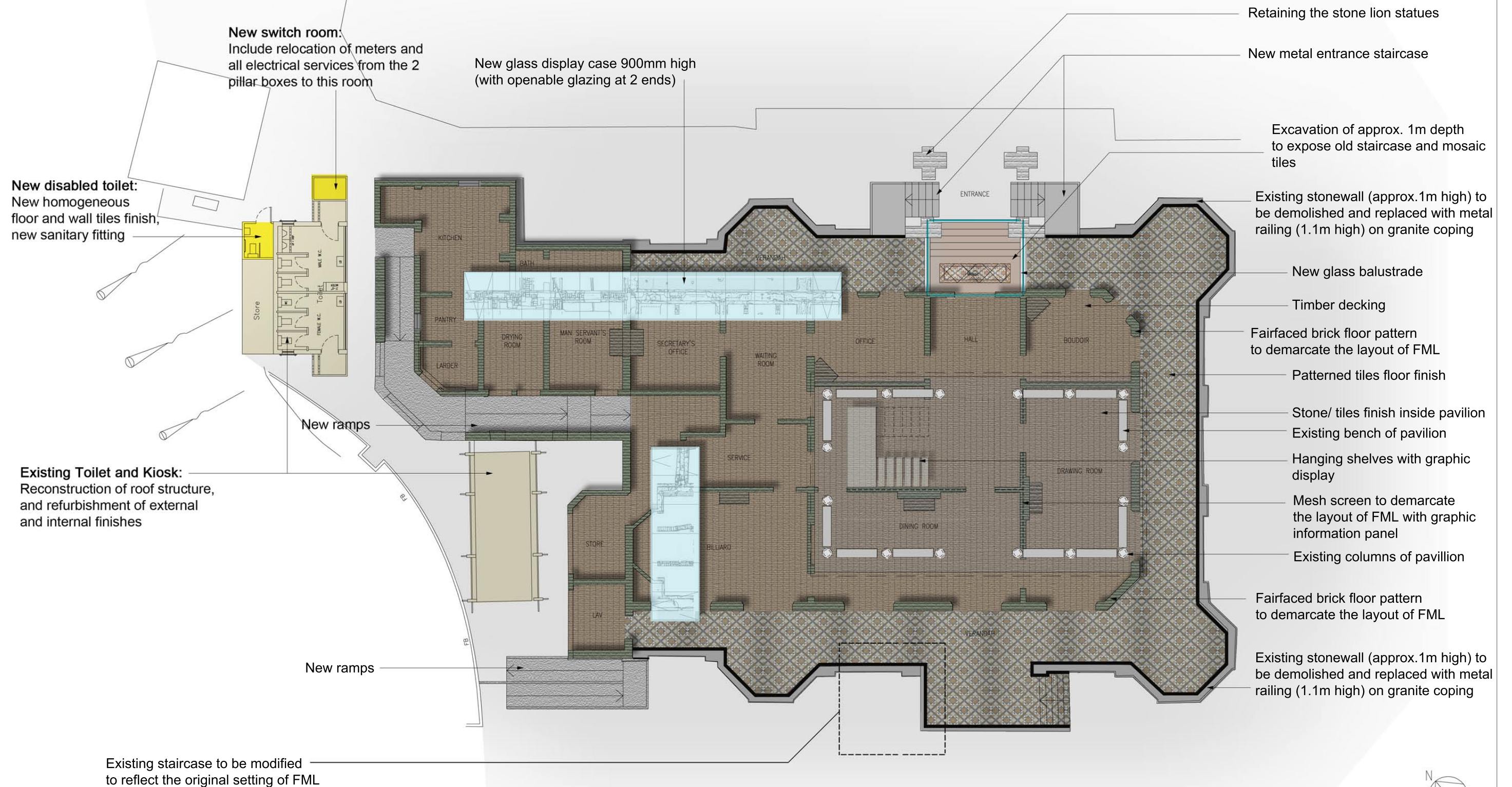
Site Plan

1:500 [A3]



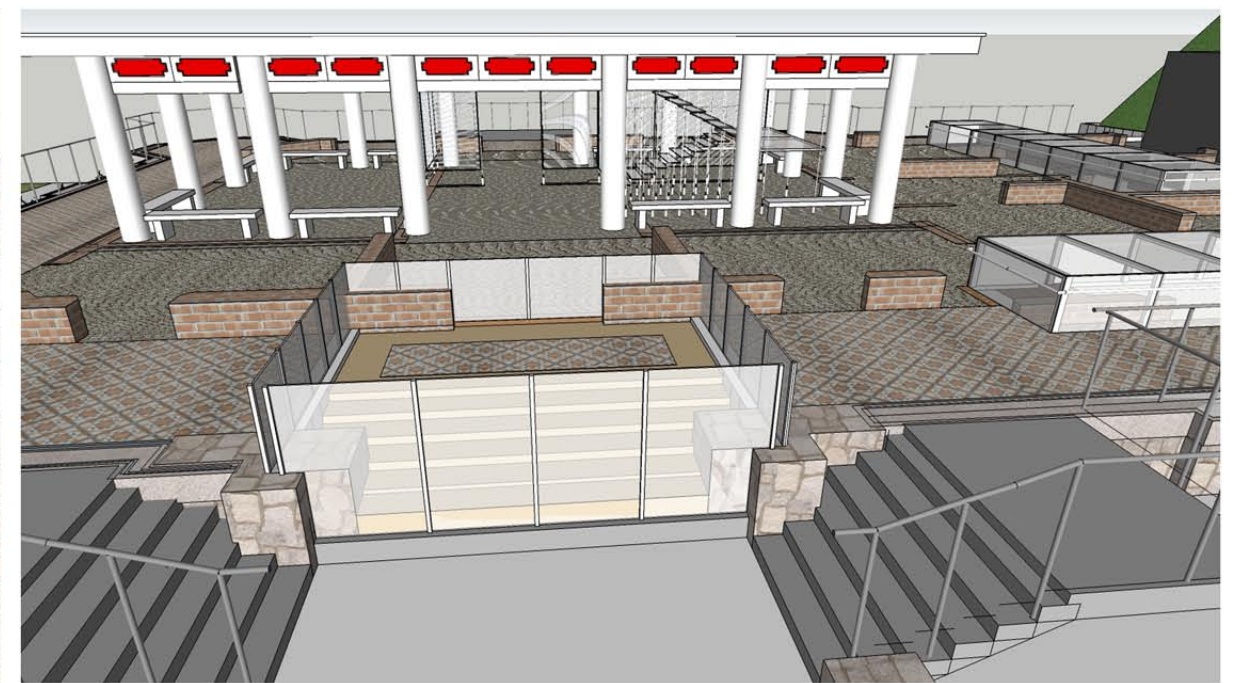
Scheme 1 Ground Floor Plan

1:200 [A3]



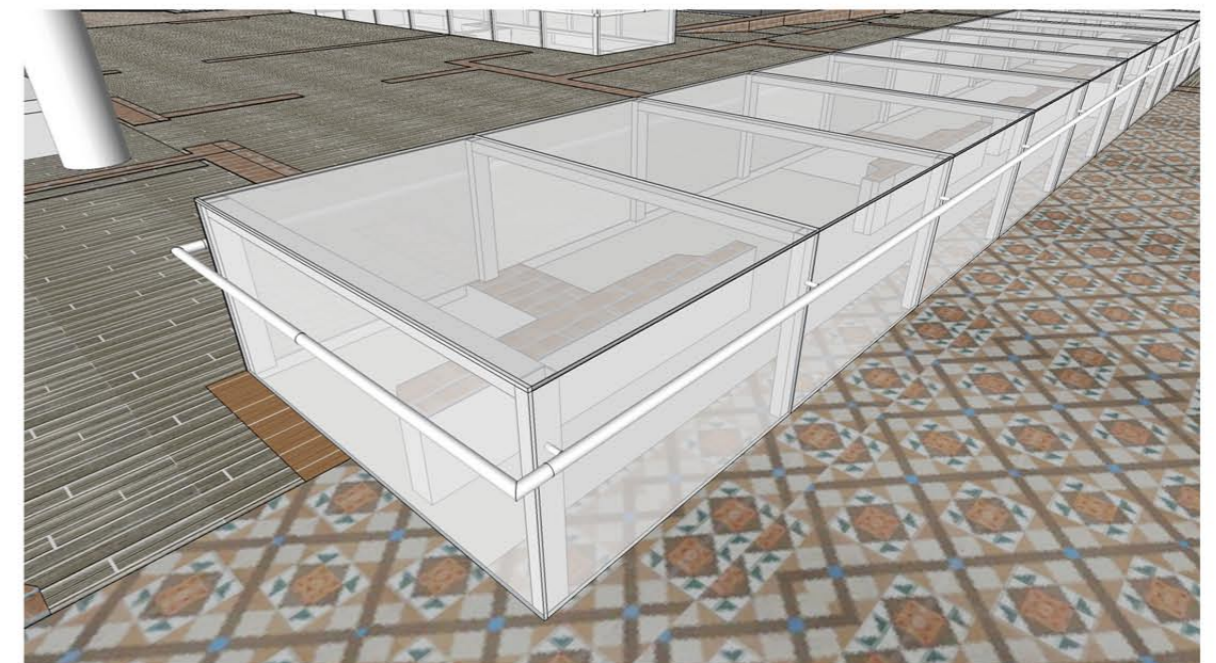
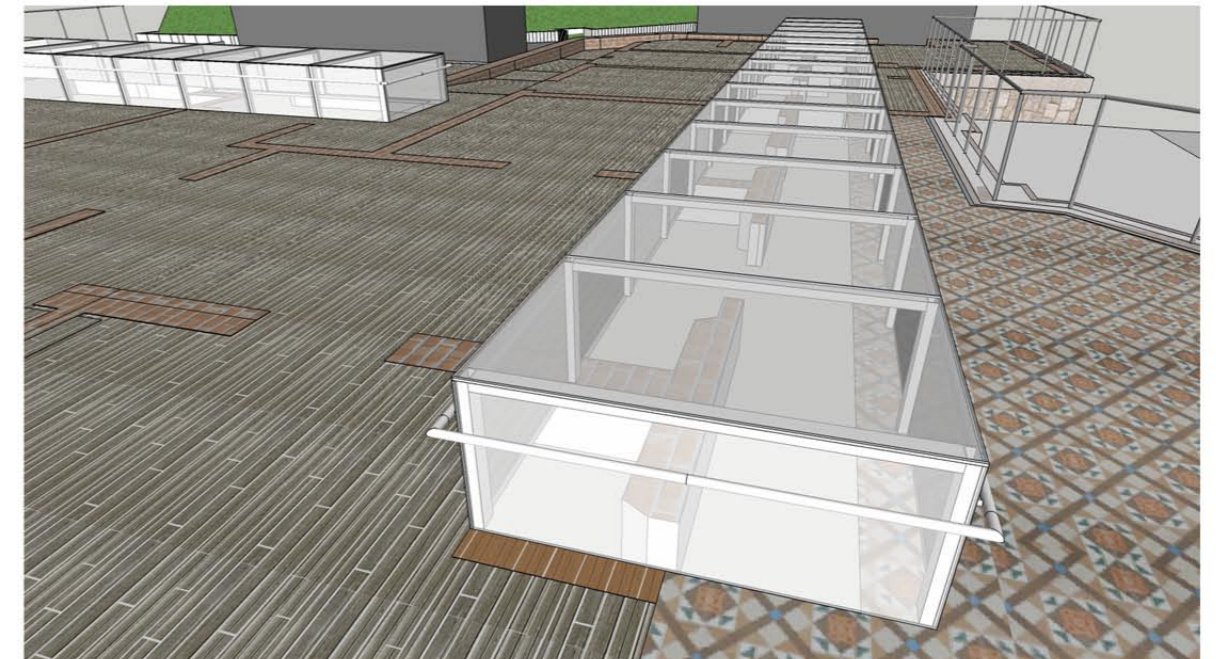
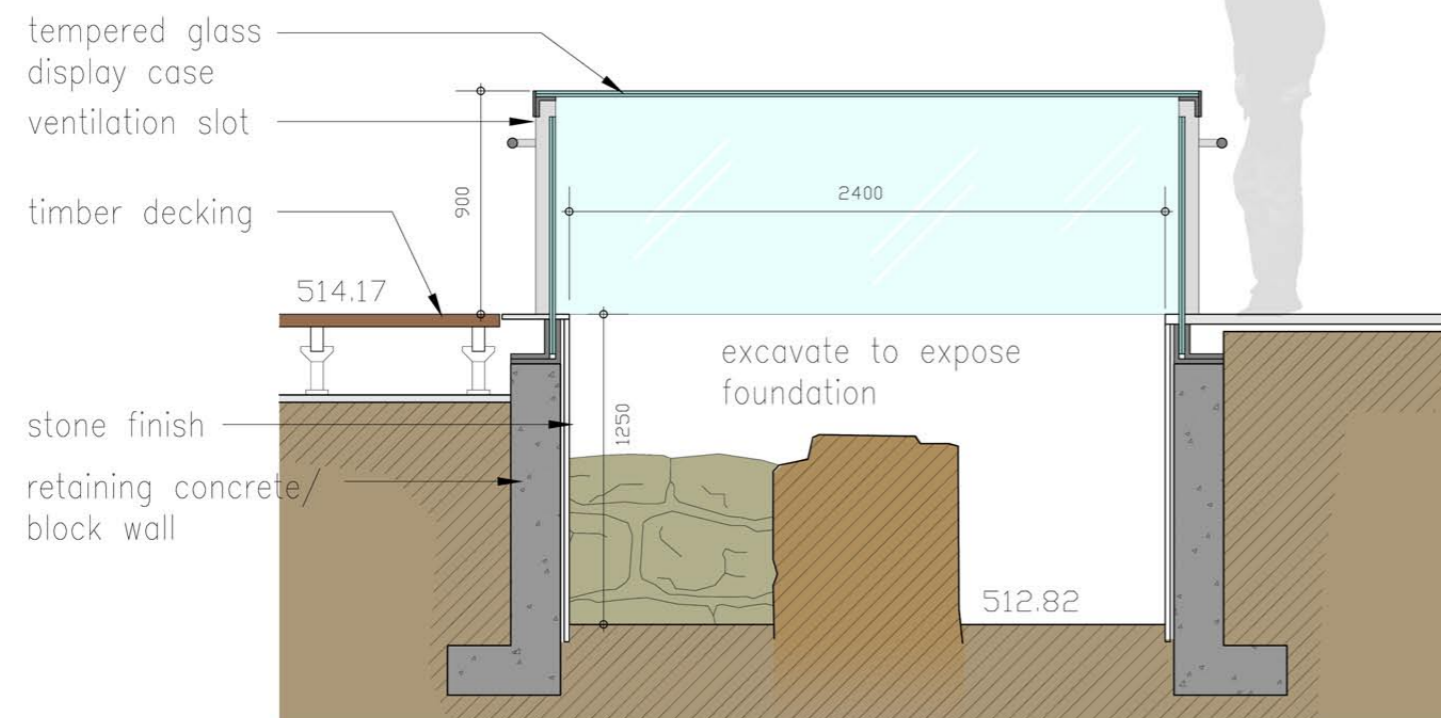
Scheme 1

Perspectives



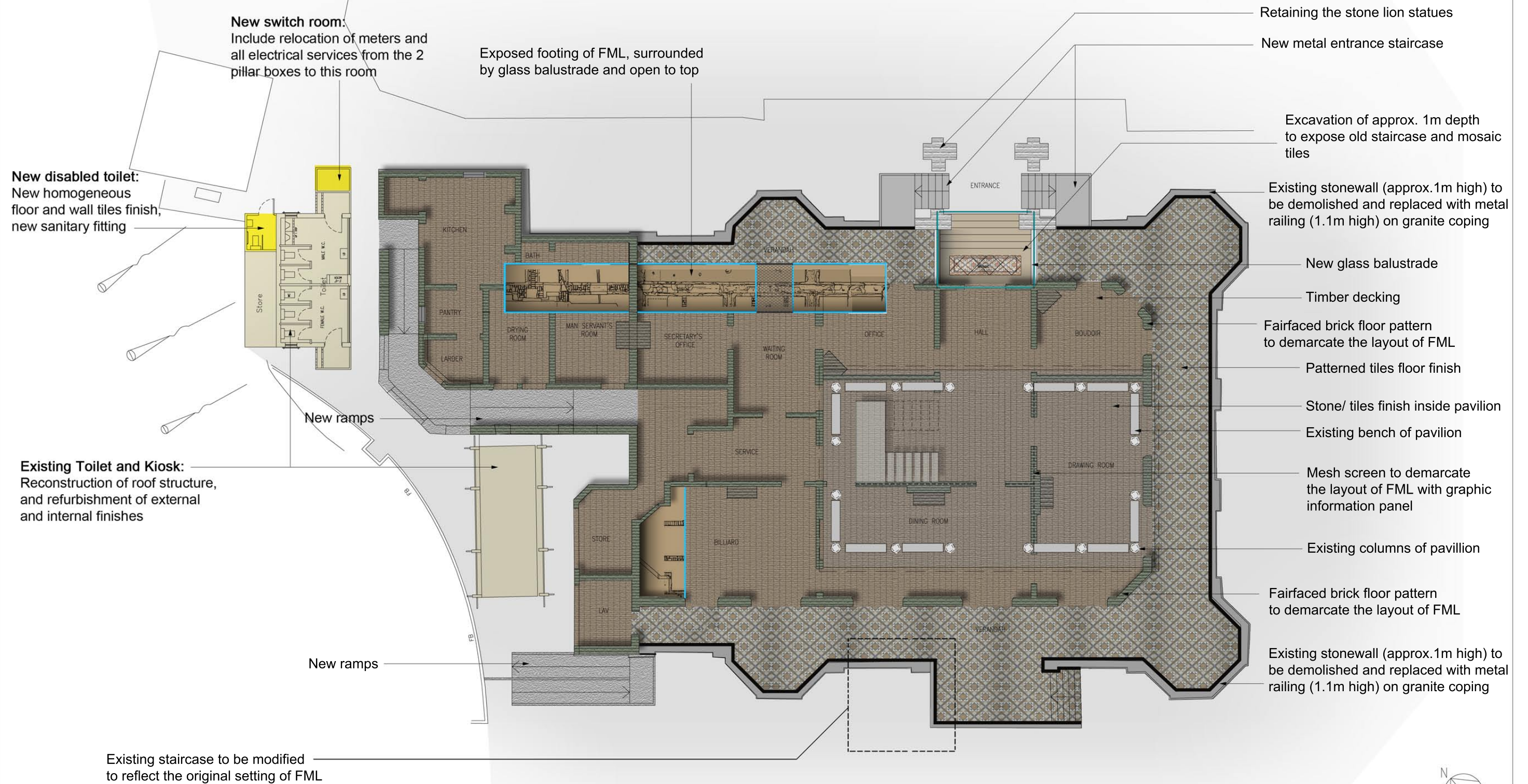
Scheme 1 Details for Display of Footing

1:30 [A3]



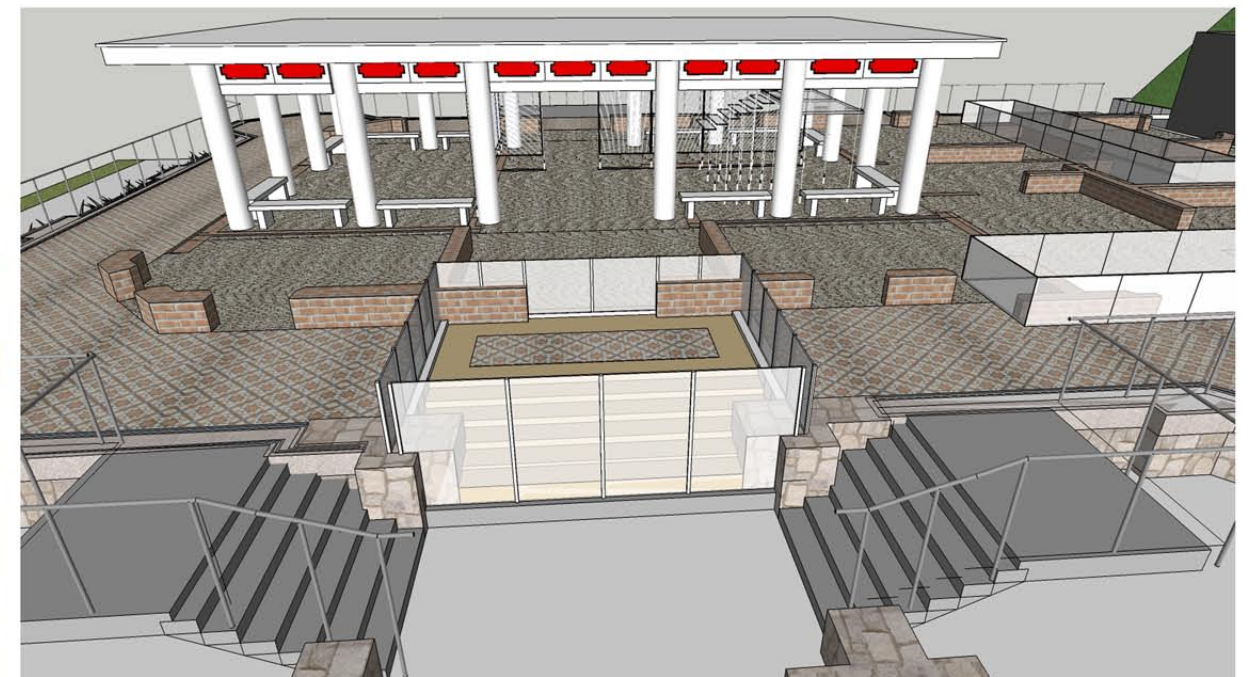
Scheme 2 Ground Floor Plan

1:200 [A3]



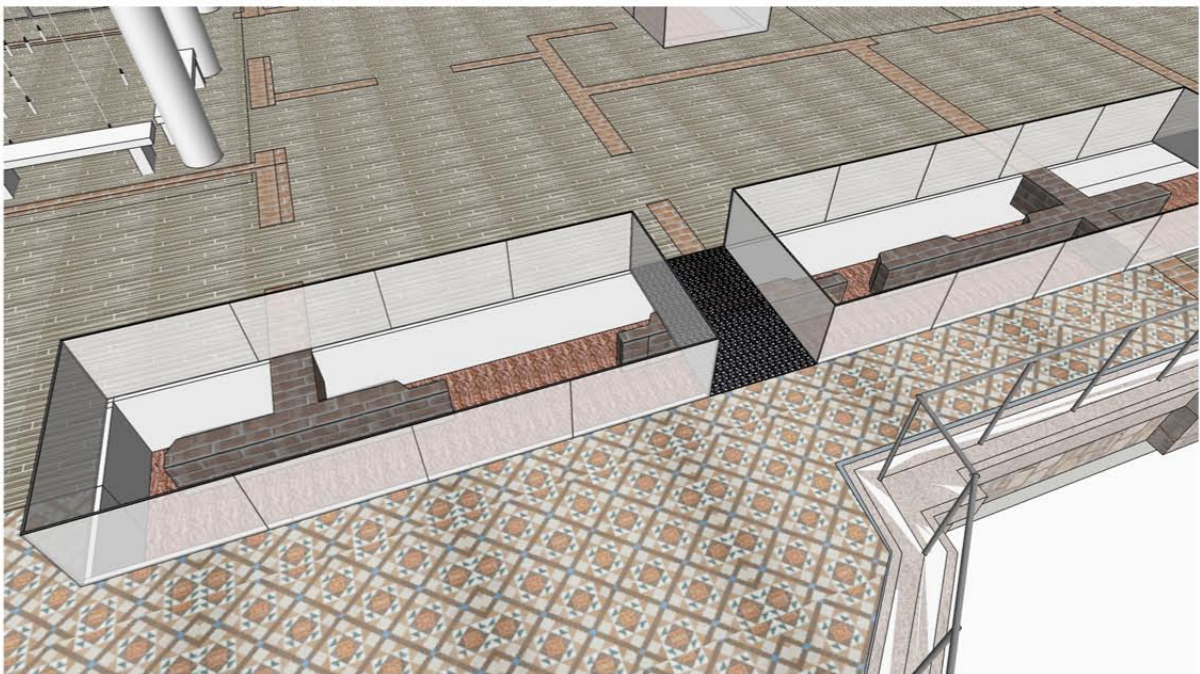
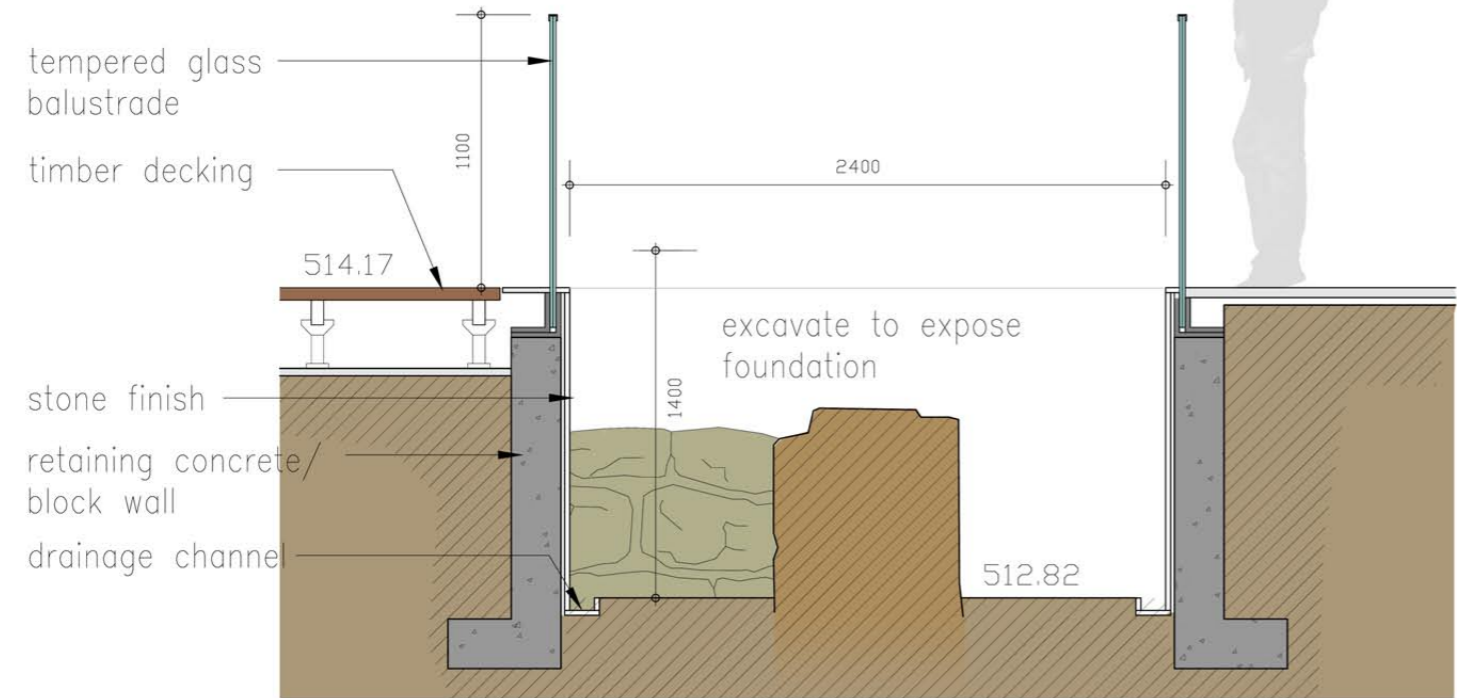
Scheme 2

Perspectives



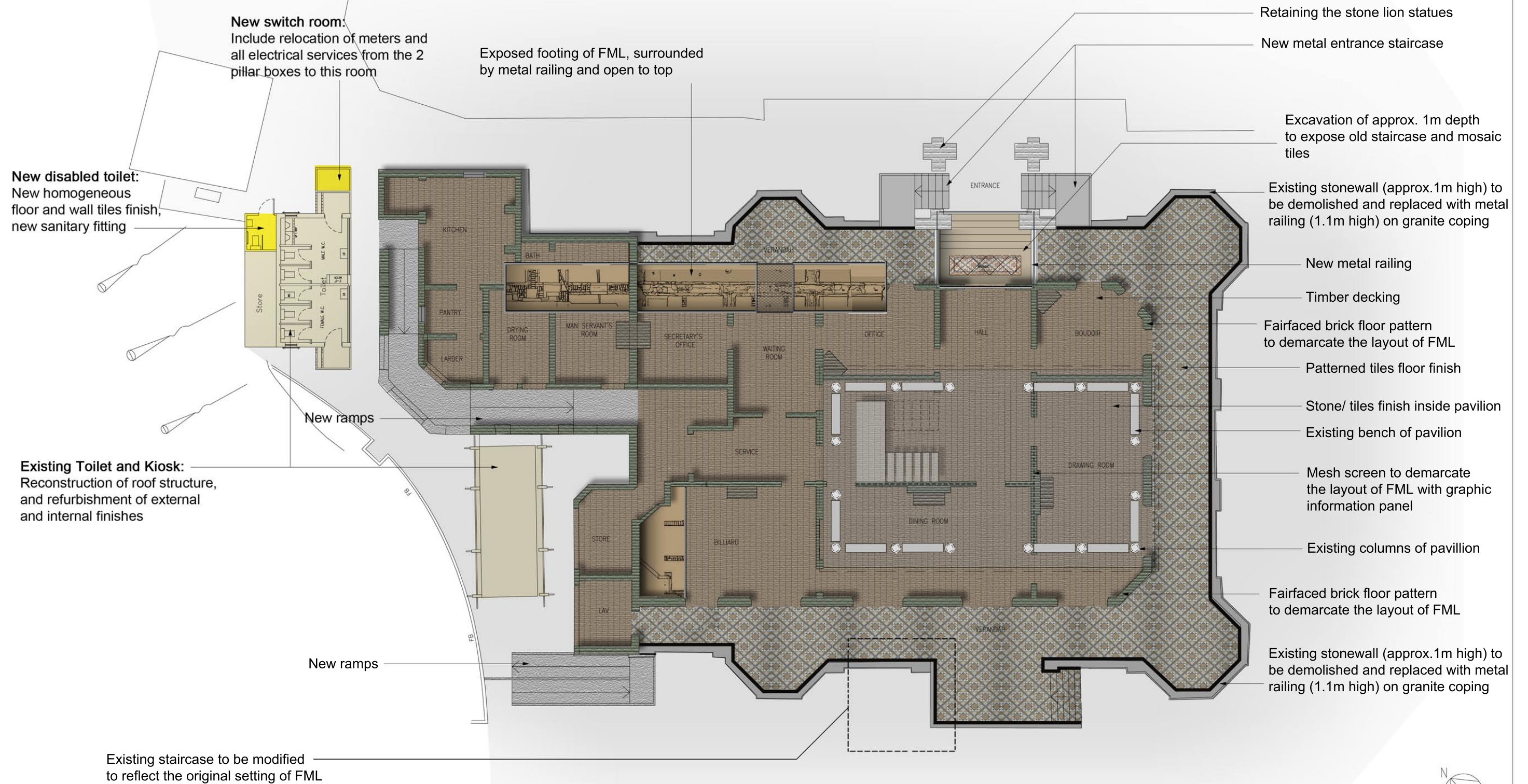
Scheme 2 Details for Display of Footing

1:30 [A3]

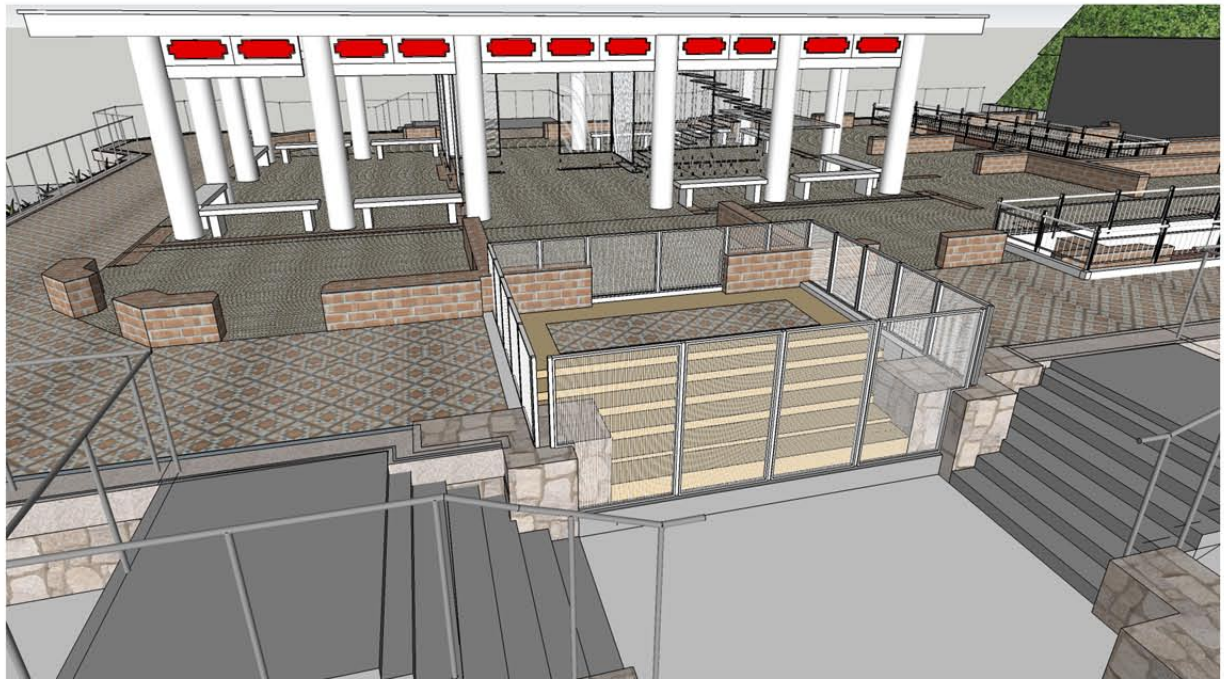


Scheme 3 Ground Floor Plan

1:200 [A3]

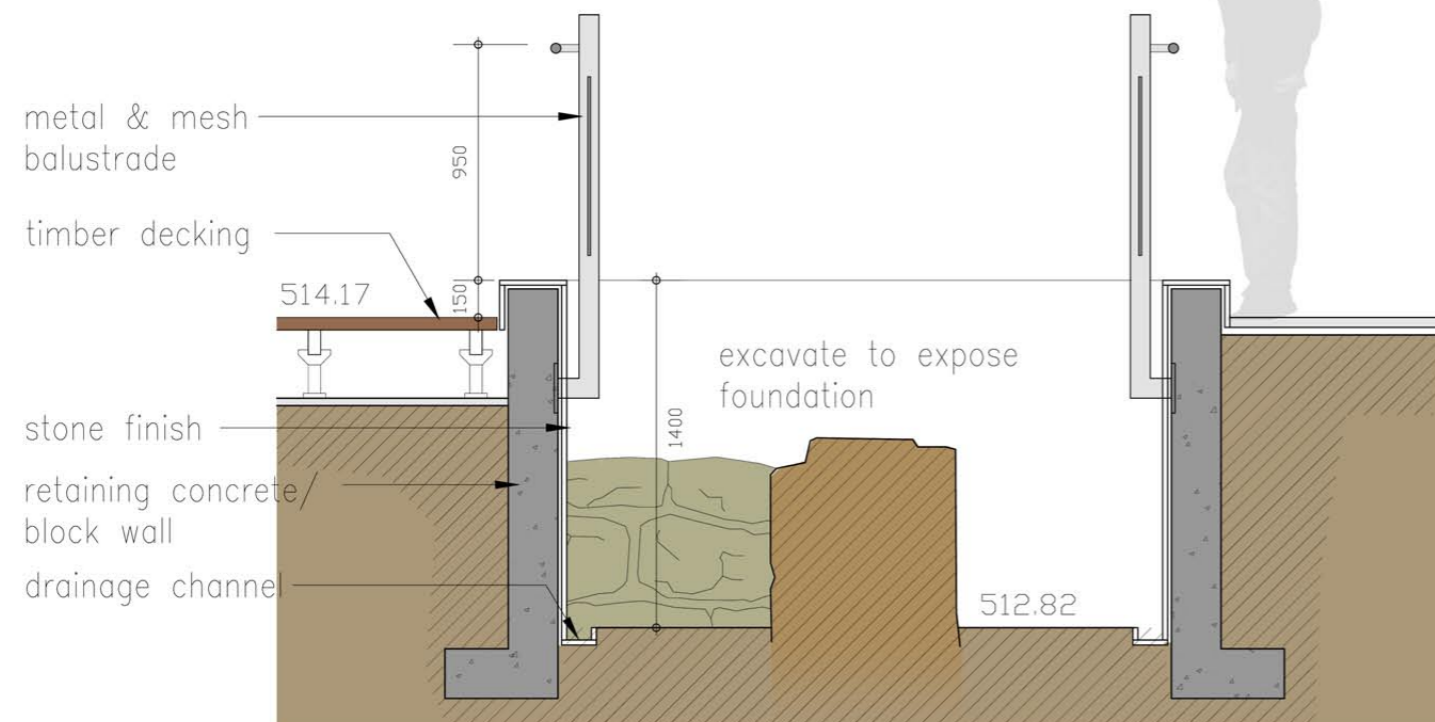
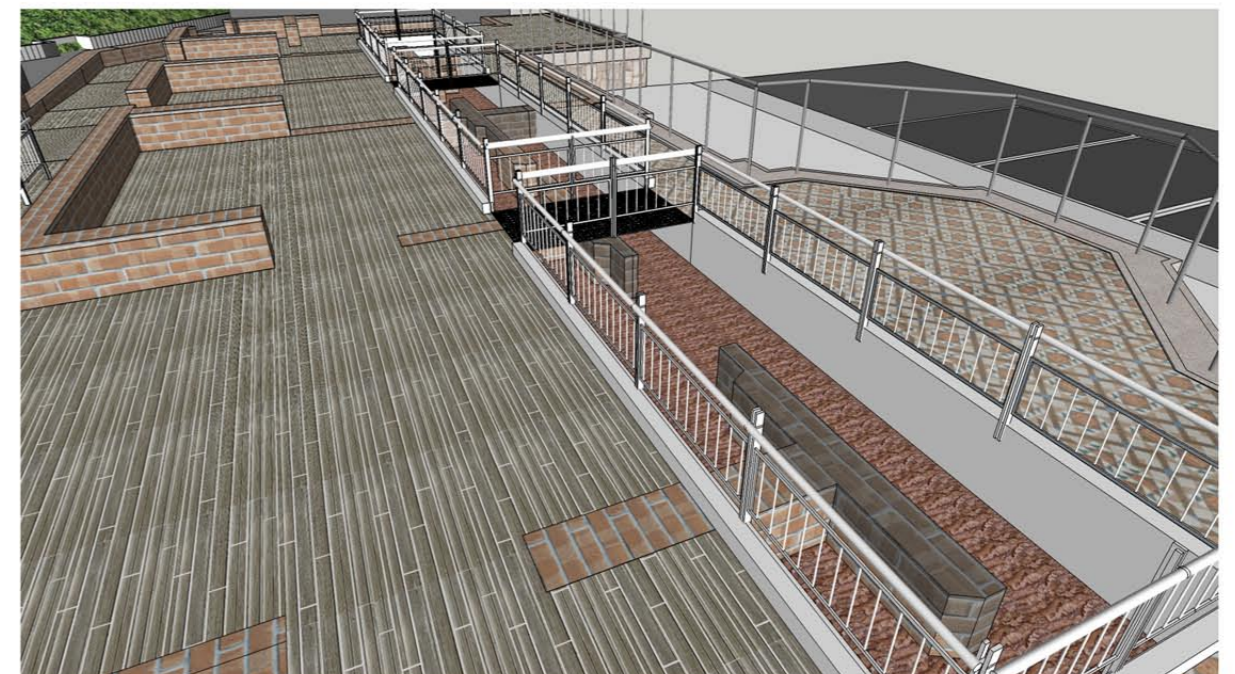


Scheme 3
Perspectives



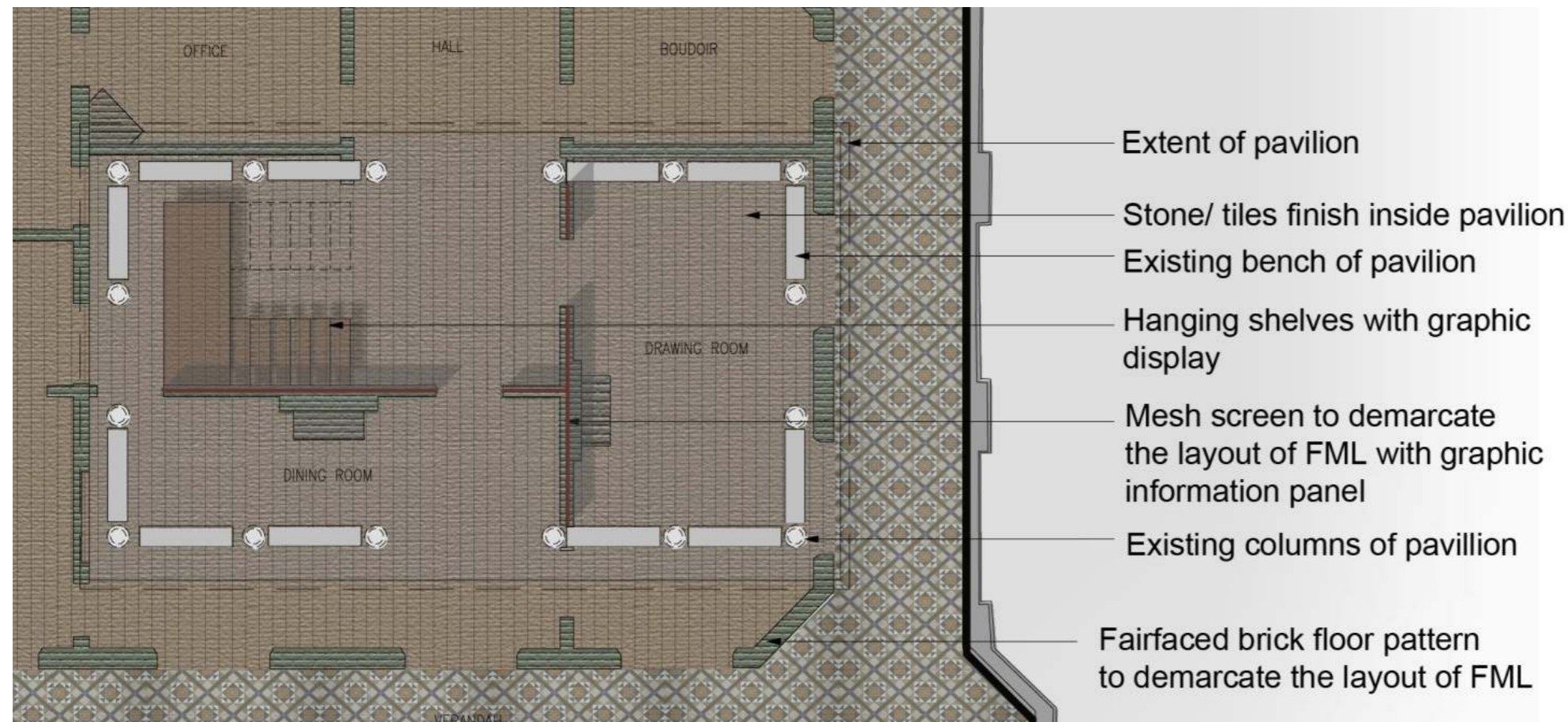
Scheme 3 Details for Display of Footing

1:30 [A3]



Inside the Pavilion

Structure and benches of pavilion are maintained, with addition of information display



Reference images

