

Photos of Fat Tat Tong, Ha Wo Hang, Sha Tau Kok, New Territories



Aerial view showing Fat Tat Tong (shaded red) and its surrounding area

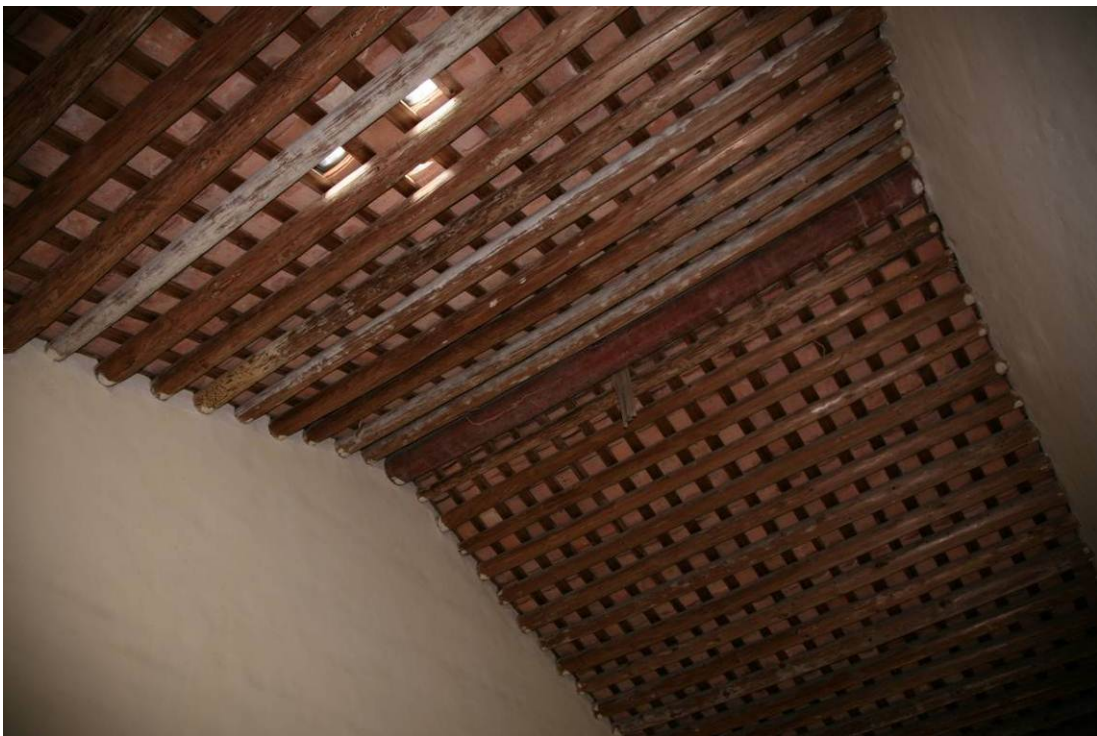


Exterior of Fat Tat Tong





Name of Fat Tat Tong and its construction year marked on the pediment above the front verandah



A pitched Chinese tiled roof supported by timber purlins



A shared verandah on the upper floor



The brick bridges connecting the upper floor of the main building  
with the roof terraces of the rear outhouses





Hooded windows at the flank walls



Metal sliding doors at the main entrances