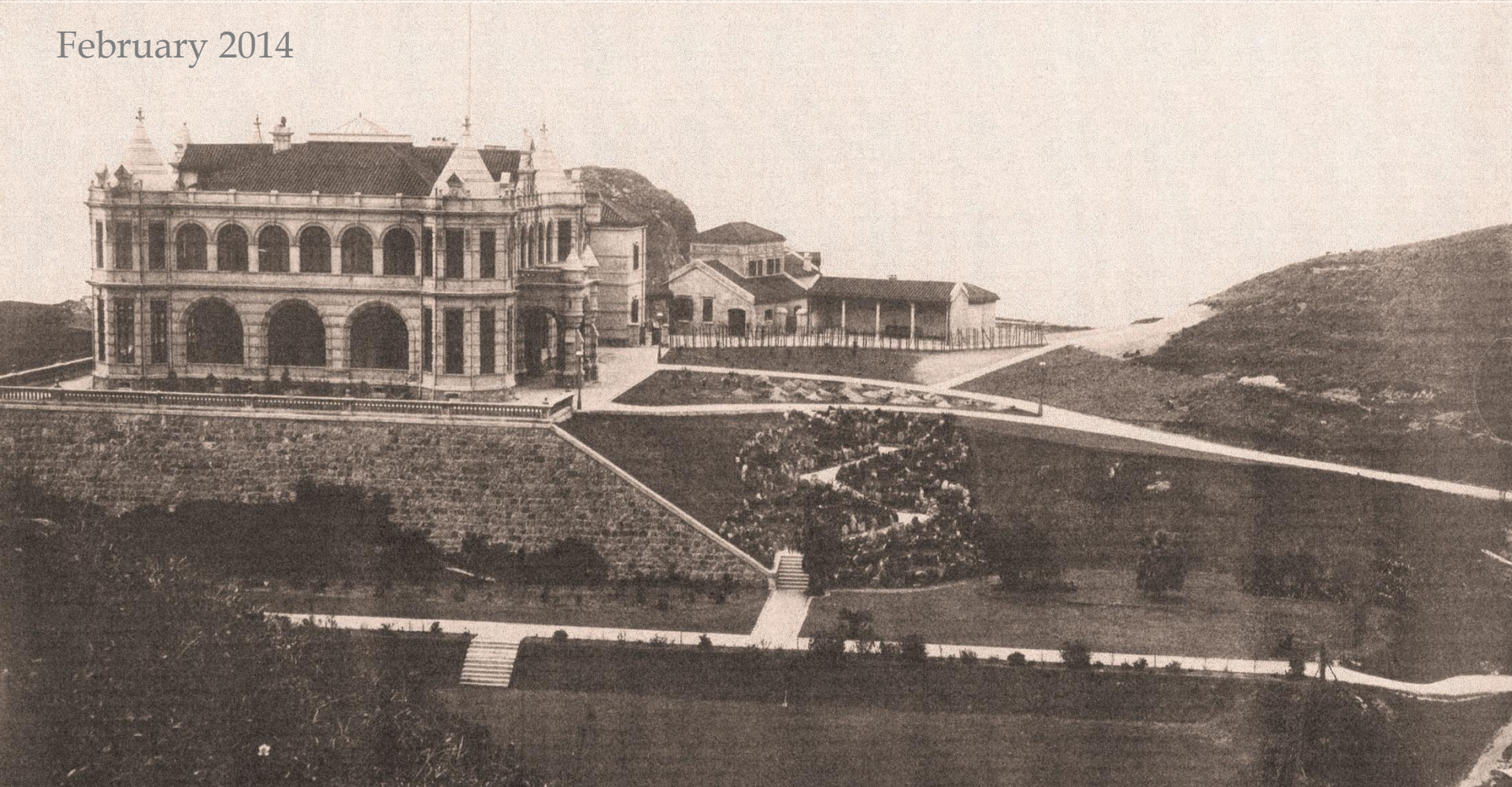
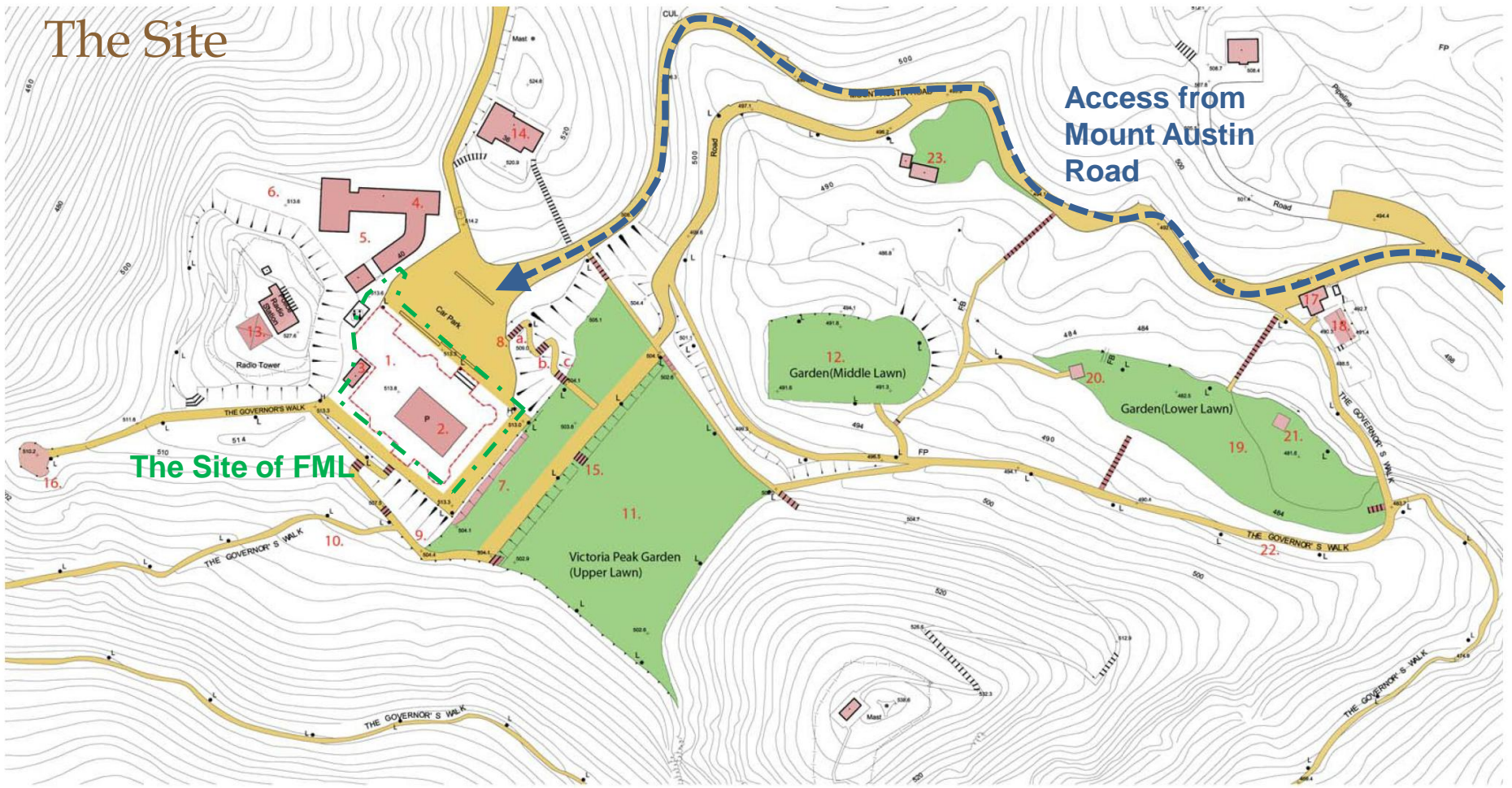


# Concept Design for Interpretation of the Former Mountain Lodge and Improvement to its Surrounding Areas

February 2014



# The Site

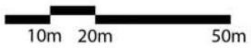


Access from  
Mount Austin  
Road

The Site of FML

### Legend

- |  |                                      |                        |                      |
|--|--------------------------------------|------------------------|----------------------|
| 1. Foundation of Former Mountain Lodge           | 7. Retaining wall                    | 17. Gate Lodge         | Open Space           |
| 2. Pavilion by the former Urban Council          | 8. Zigzag Footpath Steps             | 18. Terrace            | Circulation          |
| 3. Kiosk   | 9. Circulation (Footpath)            | 19. Garden(Lower Lawn) | Buildings / Features |
| 4. 40 Mount Austin Road                          | 10. Ruins of Mountain Lodge          | 20. Rotunda            | Foundation of FML    |
| 5. Foundation of former servant quarter - site A | 11. Victoria Peak Garden(Upper Lawn) | 21. Gazebo             |                      |
| 6. Foundation of former servant quarter - site B | 12. Garden (Middle Lawn)             | 22. Governor's Walk    |                      |
|  | 13. Radio tower                      | 23. Government Store   |                      |
|  | 14. 36 Mount Austin Road             |                        |                      |
|  | 15. Stone Steps                      |                        |                      |
|  | 16. Circular Viewing Platform        |                        |                      |



ap



# The Site



Improvement (I-1)

Intervention (I-2)

Interpretation (I-3)



# The Improvement, Intervention and Interpretation

## **Improvement (I-1)**

Refurbishment and greening of Existing Toilet and Food Kiosk

## **Interpretation (I-3)**

Interpretation of Remnants of FML

## **Intervention (I-2)**

Treatment of Existing Pavilion



## Improvement (I-1) – Refurbishment and Greening of Existing Toilet Block and Food Kiosk



# Improvement (I-1) – Refurbishment and Greening of Existing Toilet Block and Kiosk

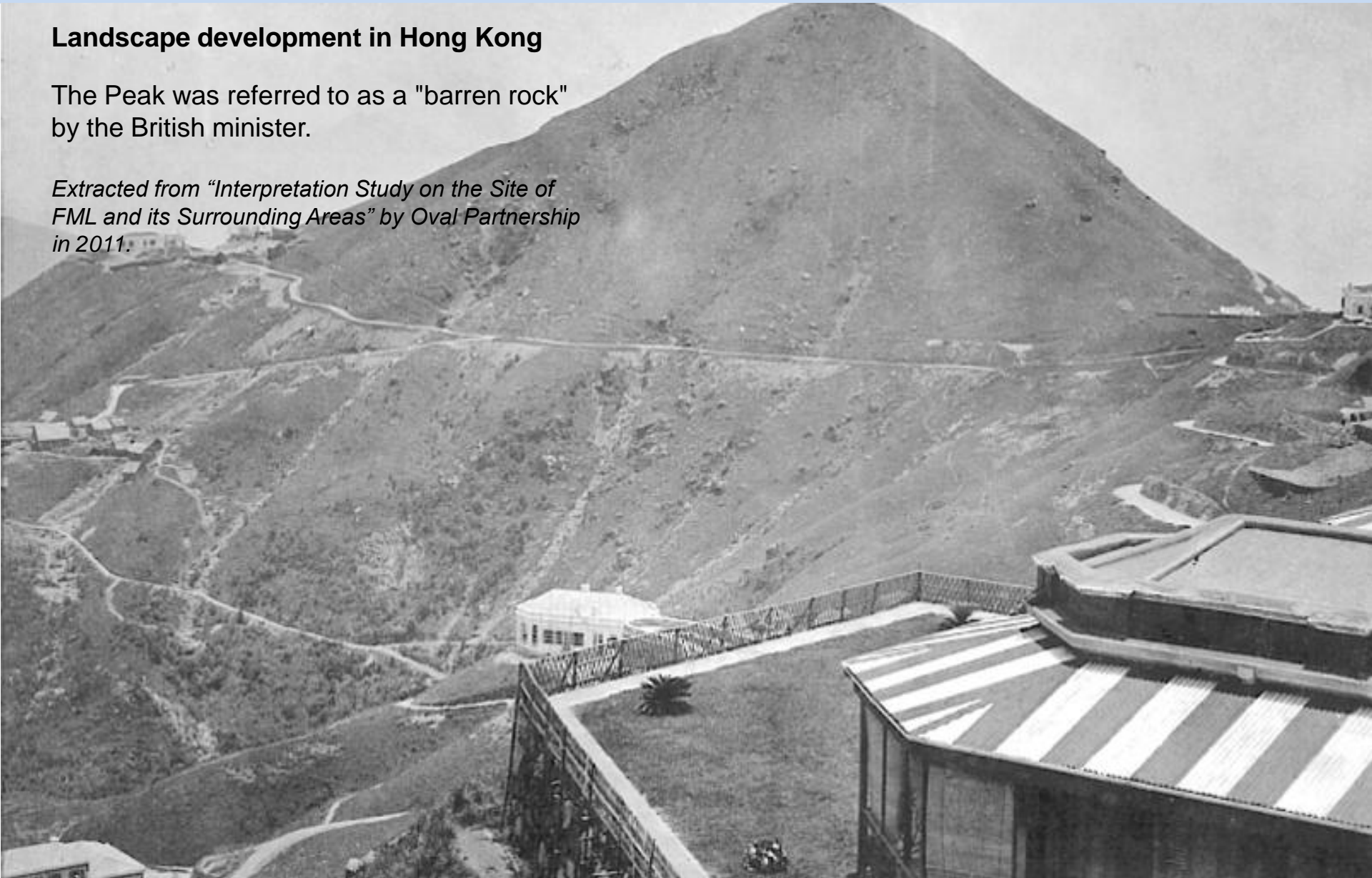


# Improvement (I-1) – Refurbishment and Greening of Existing Toilet Block and Kiosk

## Landscape development in Hong Kong

The Peak was referred to as a "barren rock" by the British minister.

*Extracted from "Interpretation Study on the Site of FML and its Surrounding Areas" by Oval Partnership in 2011.*



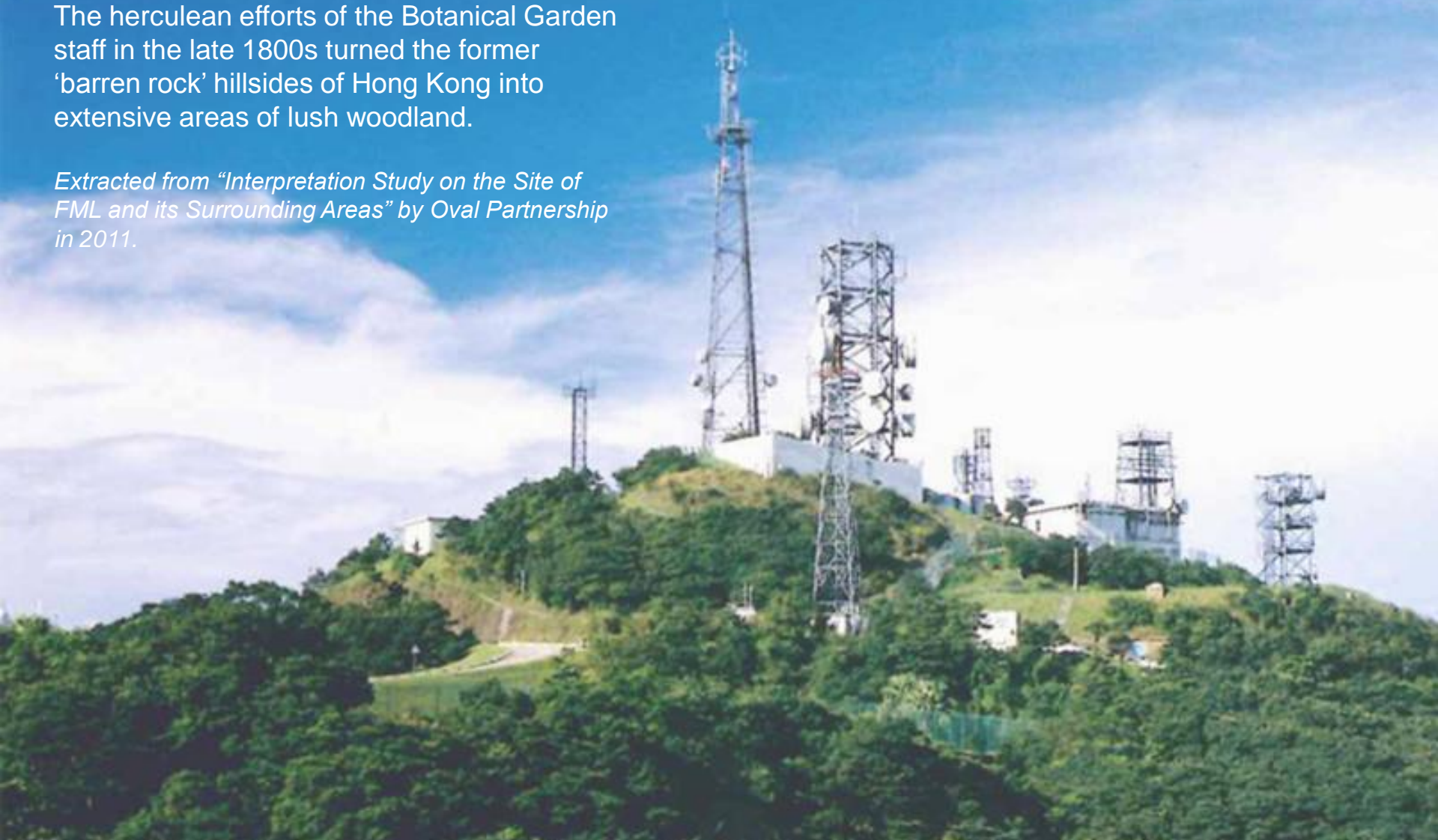


# Improvement (I-1) – Refurbishment and Greening of Existing Toilet Block and Kiosk

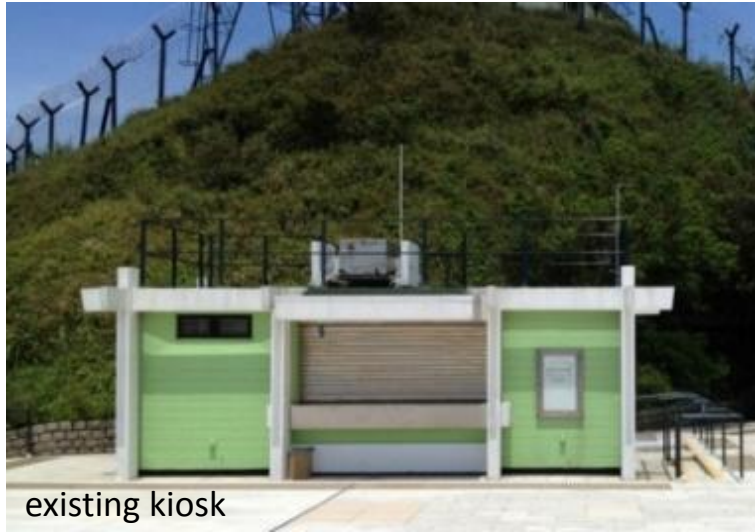
## Landscape development in Hong Kong

The herculean efforts of the Botanical Garden staff in the late 1800s turned the former ‘barren rock’ hillsides of Hong Kong into extensive areas of lush woodland.

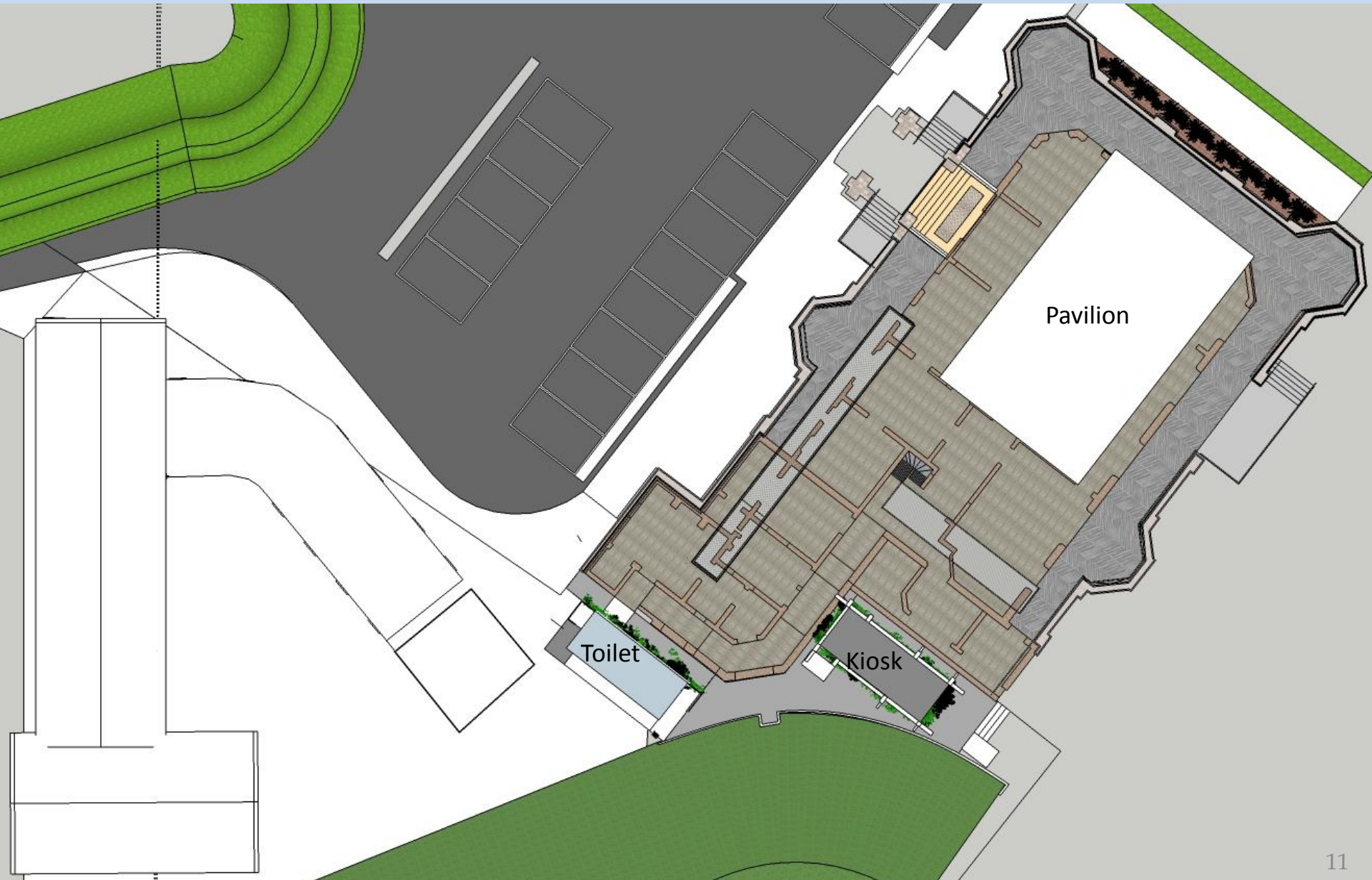
*Extracted from “Interpretation Study on the Site of FML and its Surrounding Areas” by Oval Partnership in 2011.*



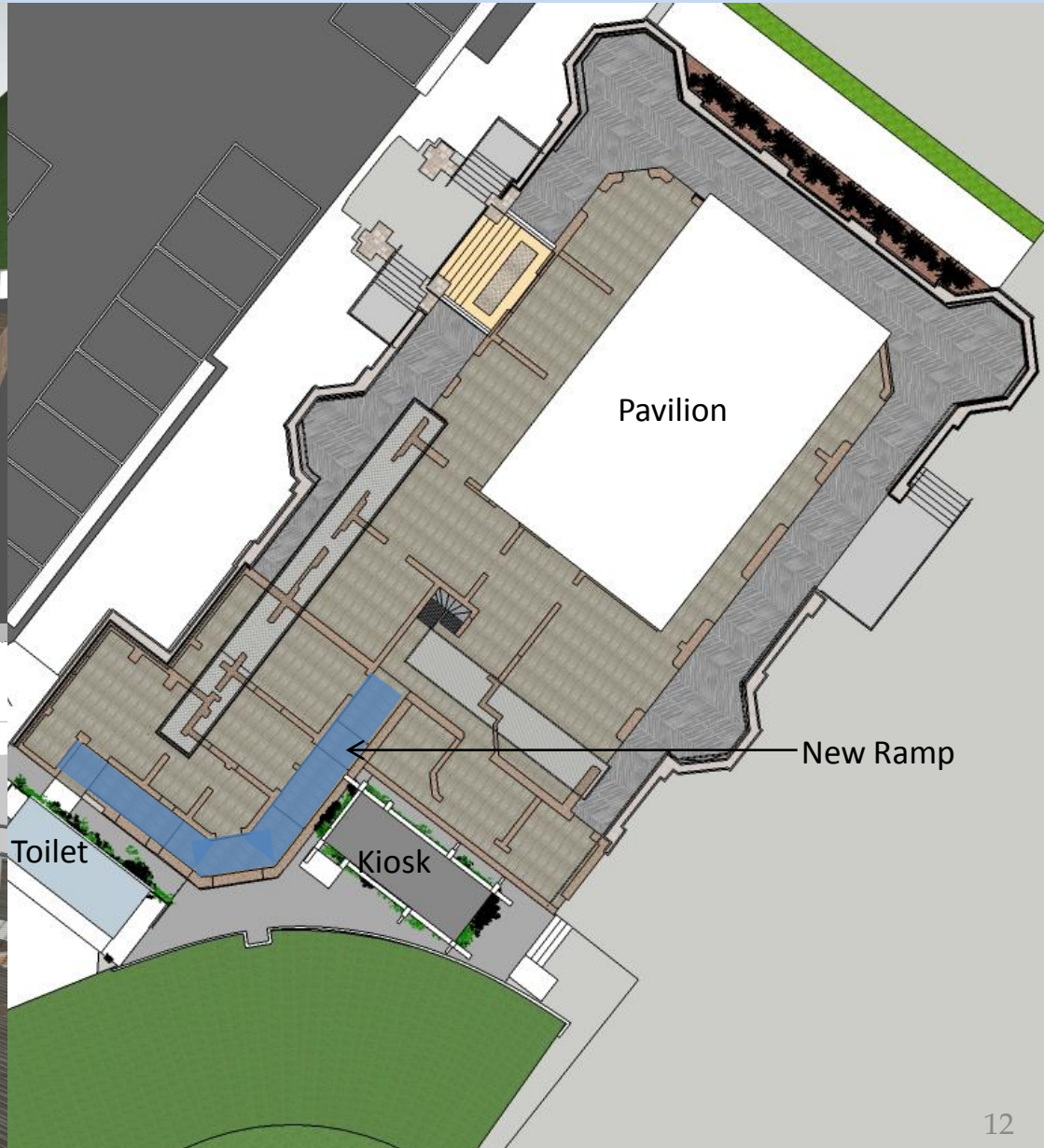
# Improvement (I-1) – Refurbishment and Greening of Existing Toilet Block and Kiosk



# Improvement (I-1) – Refurbishment and Greening of Existing Toilet Block and Kiosk



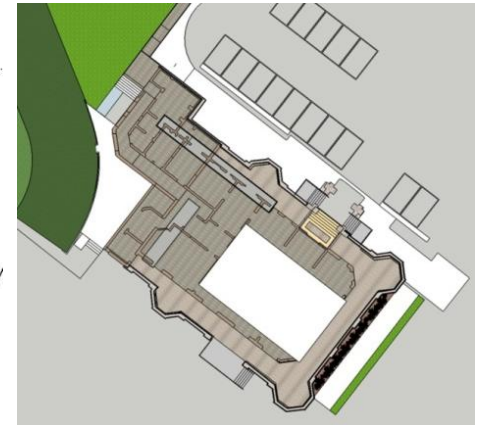
# Improvement (I-1) – New Ramp along Servant Corridor



## Intervention (I-2) – Existing Pavilion



# Intervention (I-2) – Existing Pavilion



# Intervention (I-2) – Existing Pavilion



Stone parapet to be demolished and replaced with metal railing



Foundation of FML to be retained

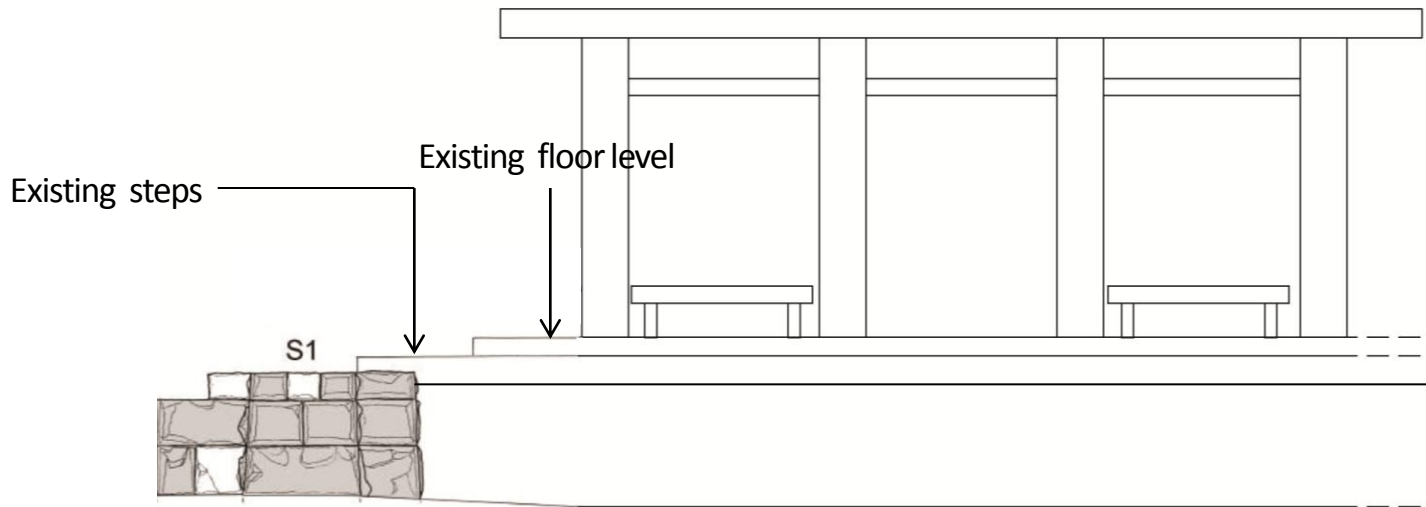


New decking over existing floor tiles to level the pavilion floor level with the whole site



# Intervention (I-2) – Existing Pavilion

## Timber Decking



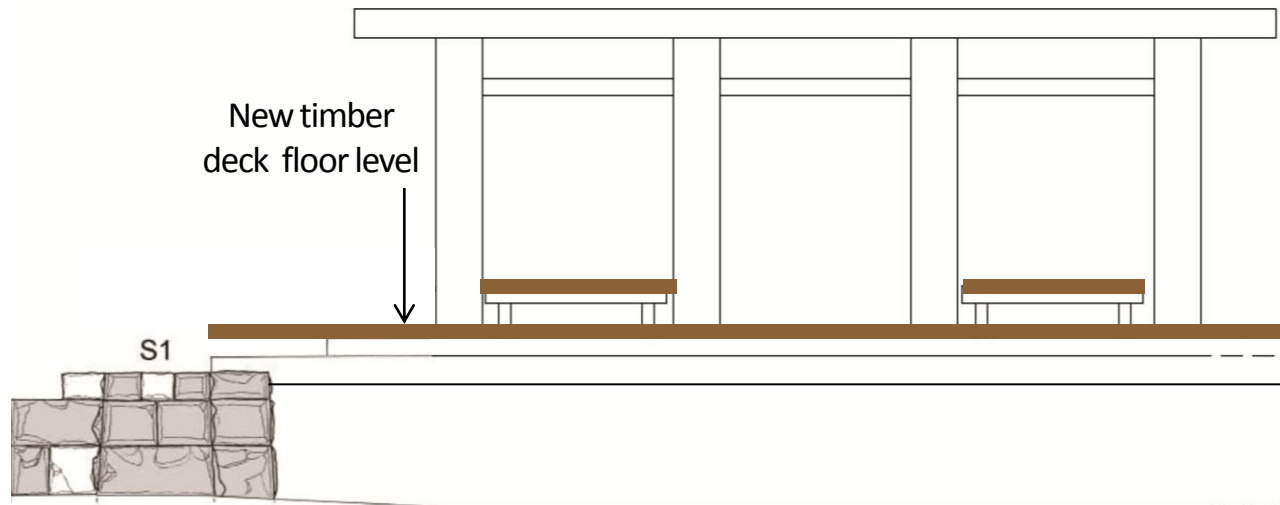
Section - Existing Pavilion





# Intervention (I-2) – New raised timber decking

## Timber Decking



Section - Existing Pavilion



# Intervention (I-2) – Existing Pavilion

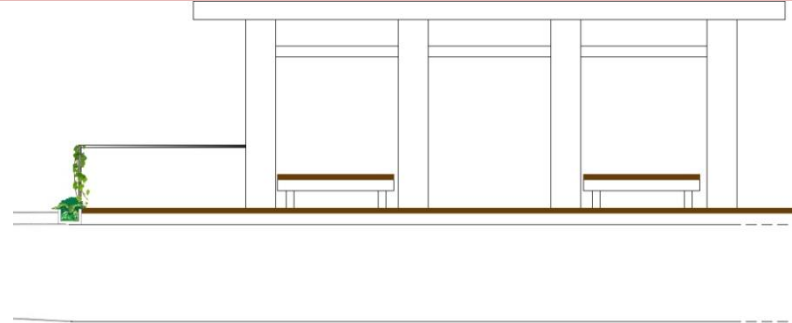
## Approach - Status Quo

[ refer to para. 29 of the minutes of AAB meeting on 20 Feb 2013 – “..... was of the view that the pavilion was one of the landmarks of the area and raised (the) reservation about the proposed demolition.” ]



# Intervention (I-2) – Existing Pavilion

Option of vertical greening on metal railings



# Intervention (I-2) – Information Display

Allow visitors to “sit side by side with the history of FML”



Display of heritage information

New timber finishing

Information display

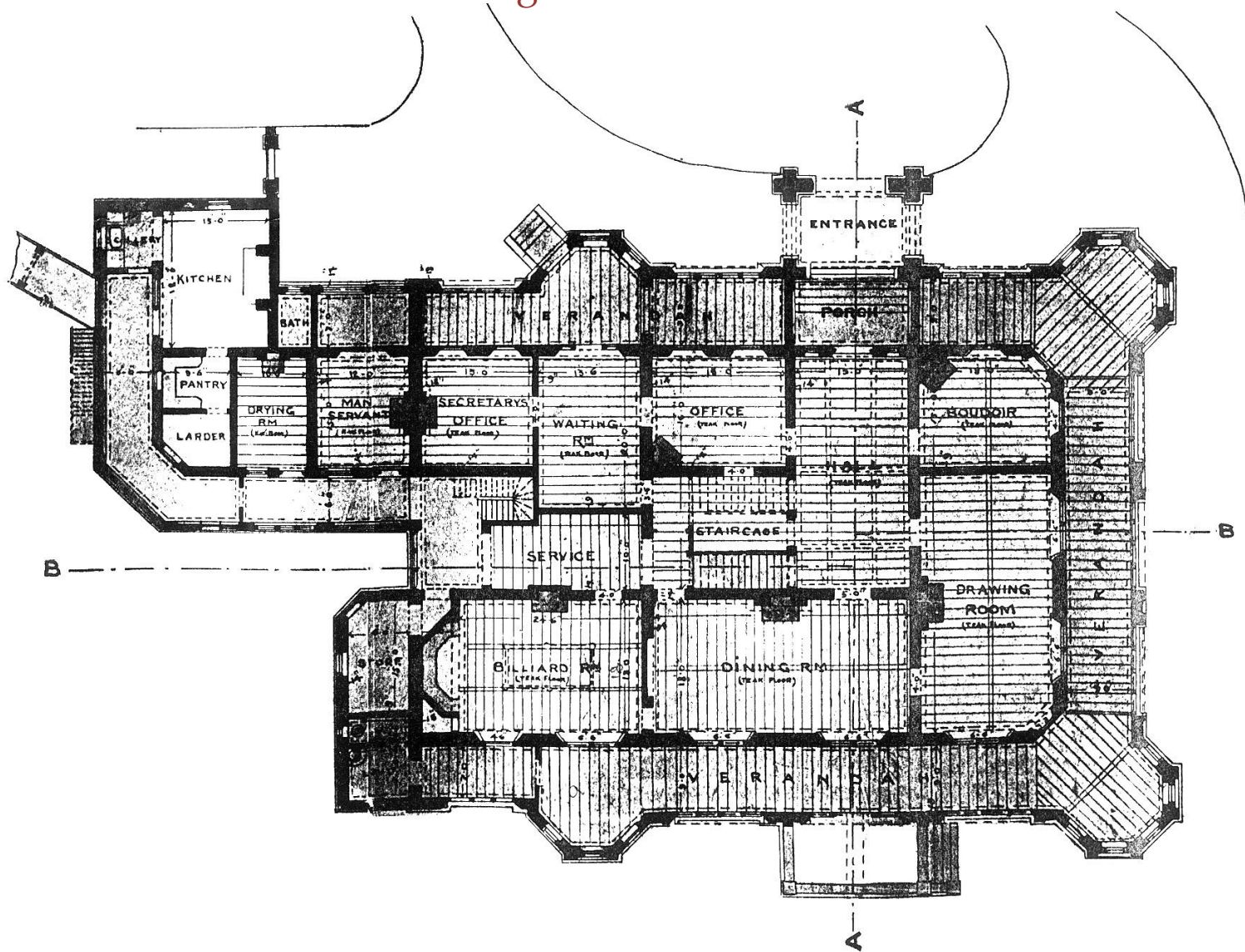


## Interpretation (I-3) – Remnants of Former Mountain Lodge



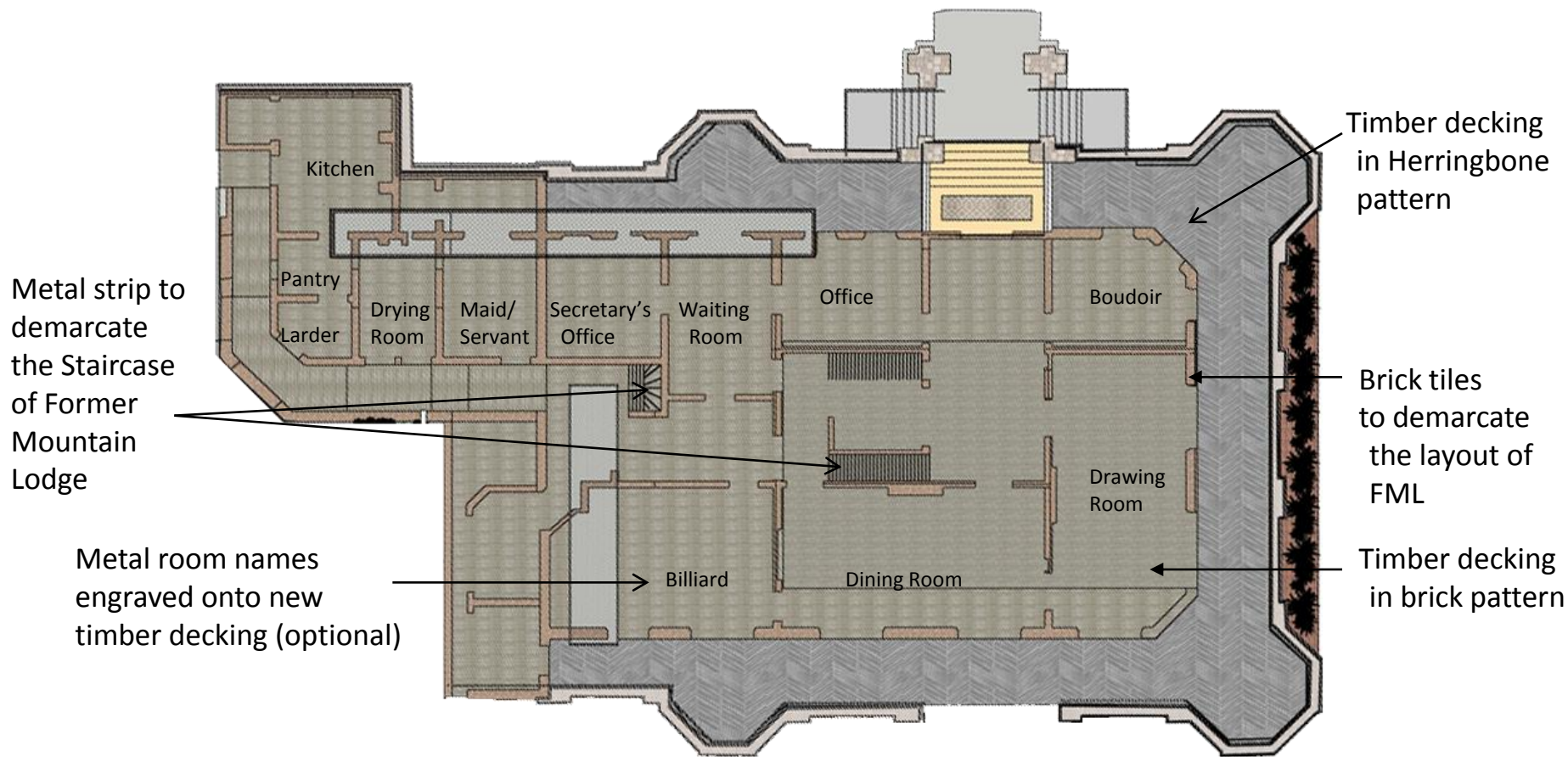
# Interpretation (I-3) – Exposing the remnants of Former Mountain Lodge

## Plan of the Former Mountain Lodge

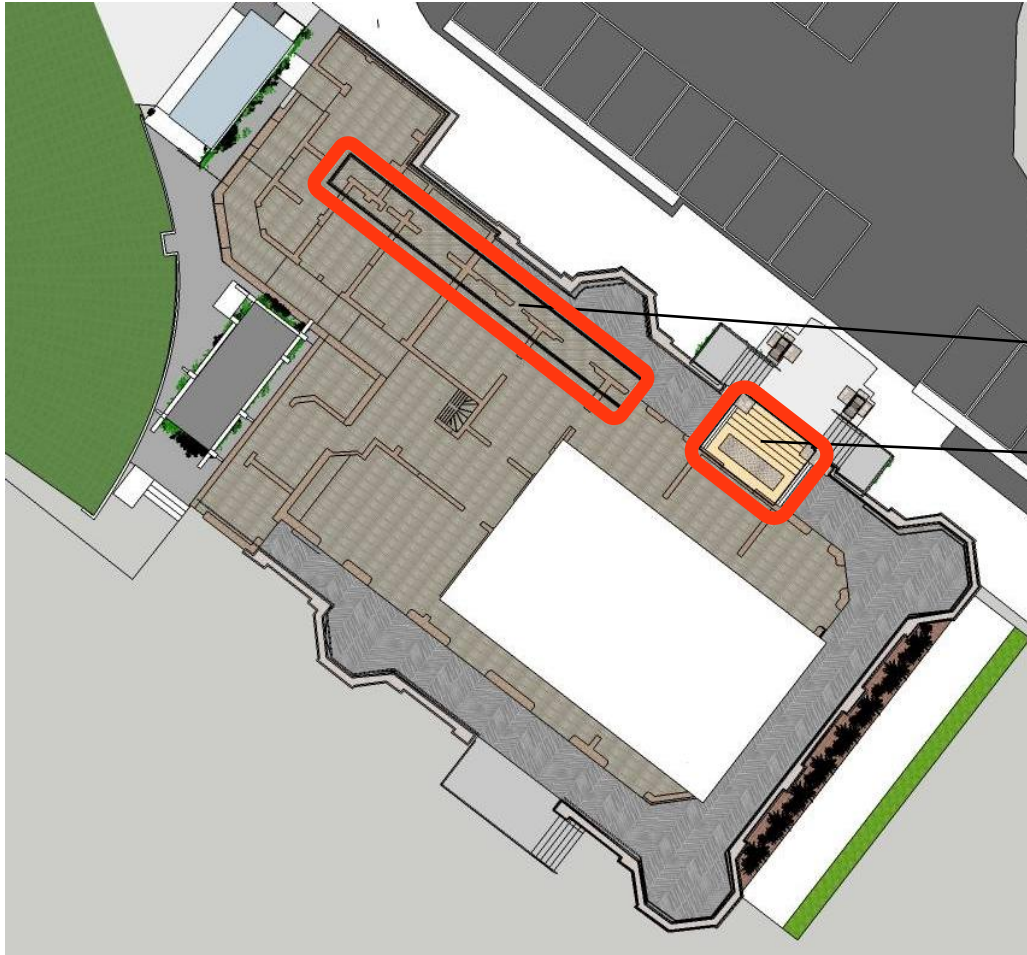


# Interpretation (I-3) – Exposing the remnants of Former Mountain Lodge

## Plan of Former Mountain Lodge incorporated onto pavilion



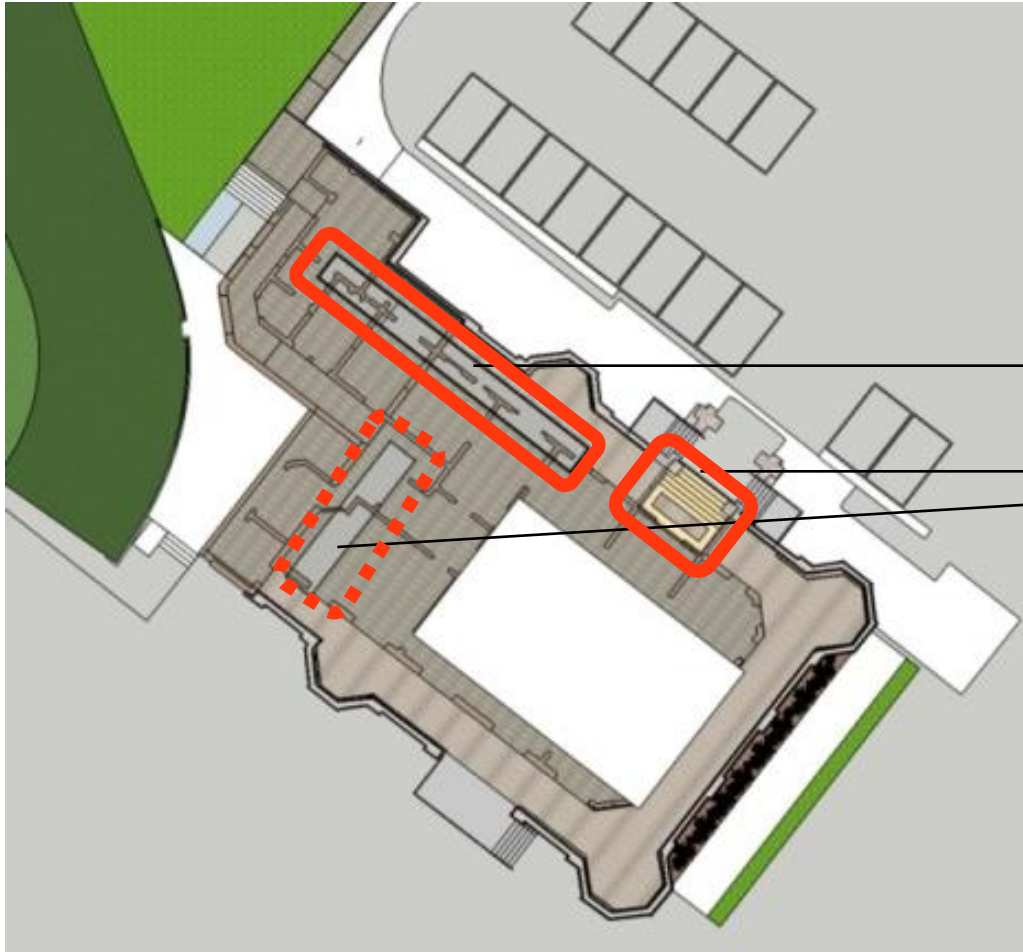
# Interpretation (I-3) – Exposing the remnants of Former Mountain Lodge





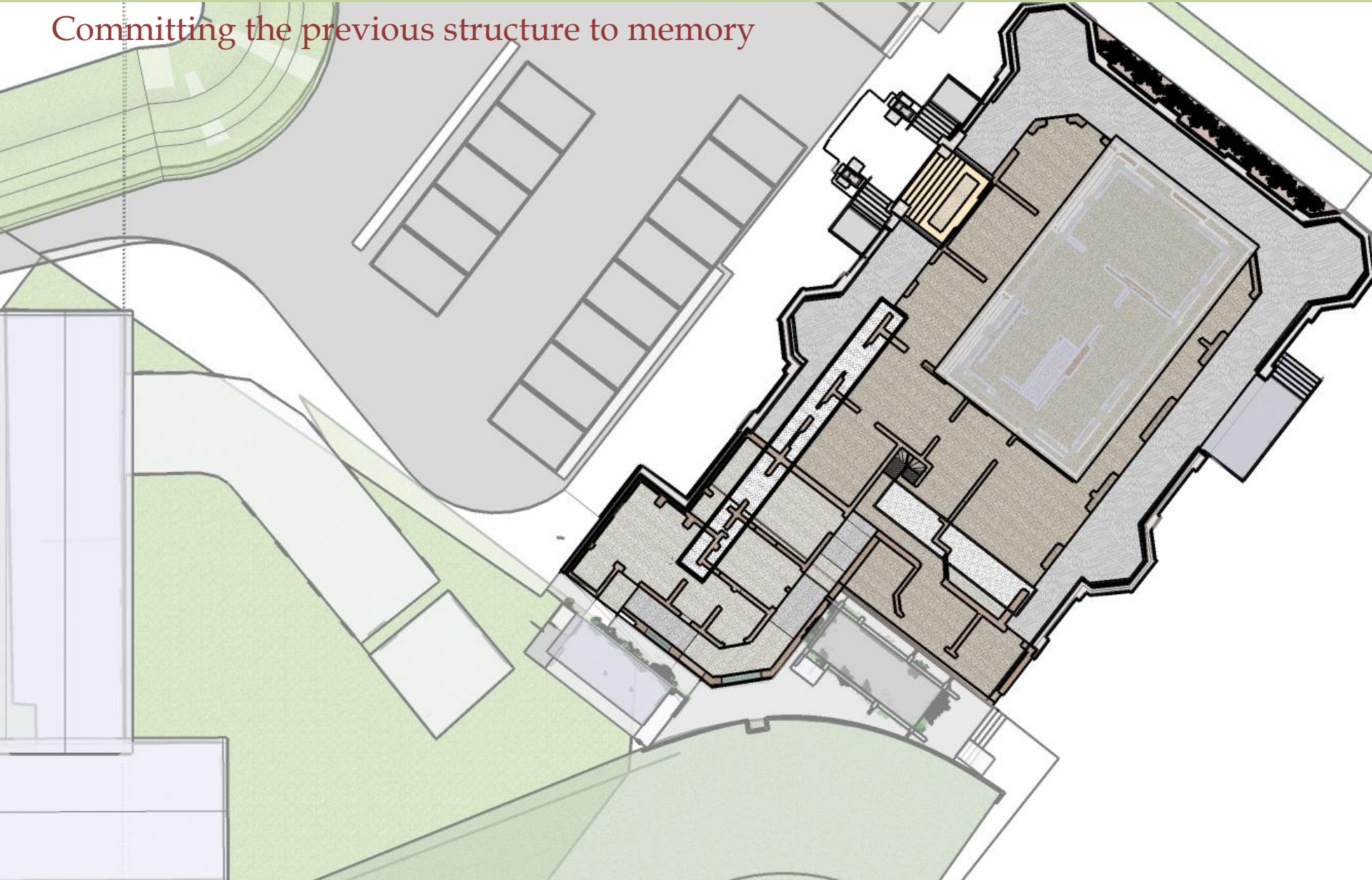
# Interpretation (I-3) – Exposing the remnants of Former Mountain Lodge

Option of exposing one more portion of remnants

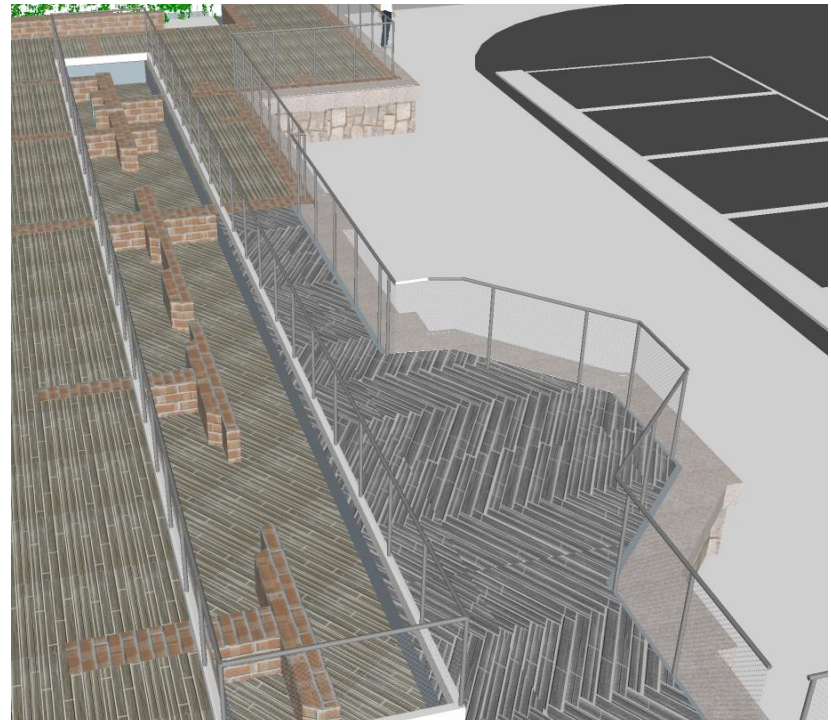
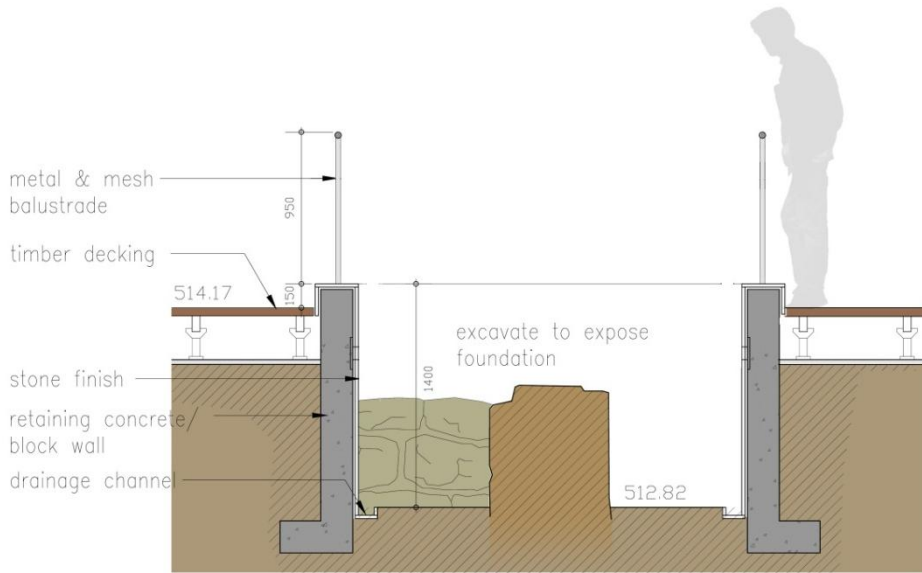


# Interpretation (I-3) – Exposing the remnants of Former Mountain Lodge

Committing the previous structure to memory



# Interpretation (I-3) – Exposing the remnants of Former Mountain Lodge



# Interpretation (I-3) – Exposing the remnants of Former Mountain Lodge

- G/F Plan of the Former Mountain Lodge demarcated on new decking
- Display of heritage information on the internal spandrel of pavilion



Thank You.

