

Photos of Race Course Fire Memorial
at So Kon Po

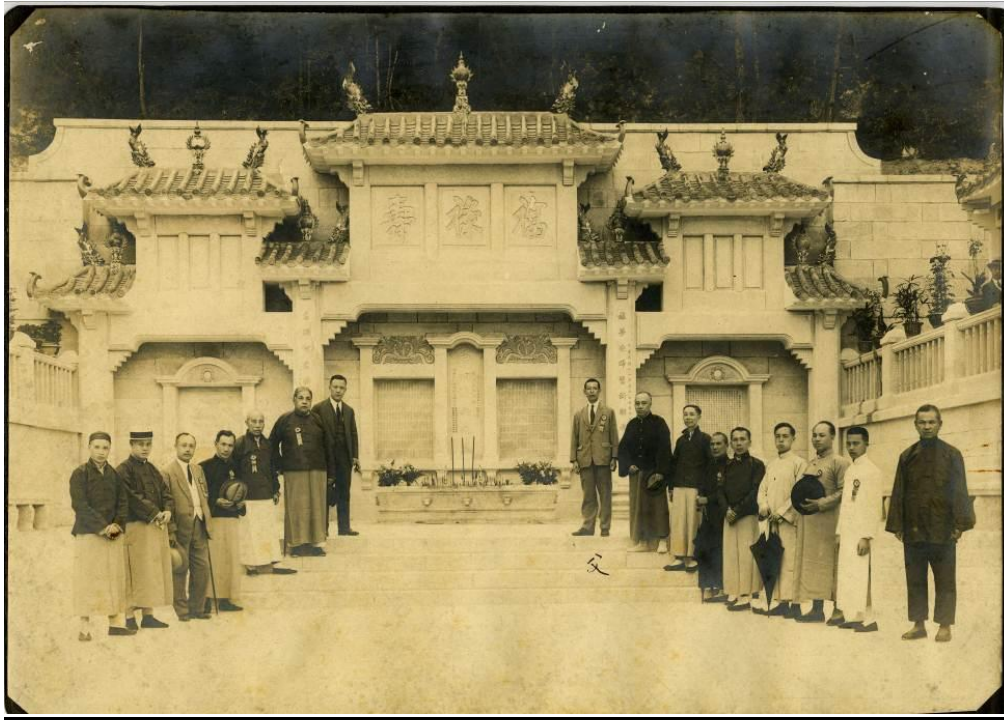


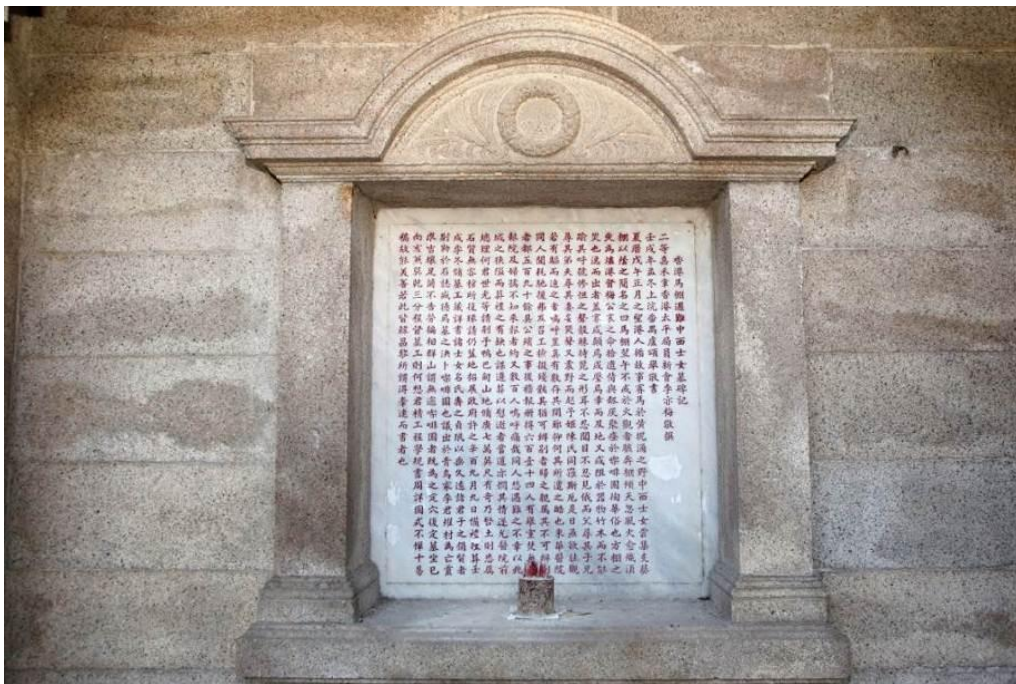
Photo taken during the opening ceremony of the Memorial in 1923.
Ninth from the right is Ho Sheung.
(Courtesy of Tung Wah Museum and Mr. Ho Cham)



Race Course Fire Memorial, 2015.
The Memorial Arch and the two Pavilions
express the beauty of symmetrical layout.



Topped with traditional hipped roofs, green glazed tiles and ceramic ornaments; the central archway is inscribed with the characters for ‘fortune’ (福), “richness” (祿) and “long life” (壽).



Commemorative Plaque in the left side bay of the Memorial Arch is fitted inside a Classical Italianate style granite niche, which records the history of the fire as well as the site selection and construction processes of the Memorial.



The plaques in the centre bay of the Memorial Arch are set in Classical Italianate framing, memorializing those who perished in the disaster.



The plaque in the right side bay of the Memorial Arch, with an Earth God shrine below.