

**MEMORANDUM FOR THE
ANTIQUITIES ADVISORY BOARD**

**PROGRESS UPDATE ON THE SHATIN TO CENTRAL LINK
TO KWA WAN STATION MODIFICATIONS FOR
THE CONSERVATION OF ARCHAEOLOGICAL FEATURES**

PURPOSE

This paper reports the latest progress of the modifications in design for the To Kwa Wan Station of the Shatin to Central Link (SCL) for the archaeological features discovered at the station works site.

BACKGROUND

2. Members were given a comprehensive account on the conservation plan for the archaeological features discovered at the works site of To Kwa Wan Station at the Antiquities Advisory Board (AAB) Meeting held on 4 December 2014 via AAB Board Paper AAB/48/2013-14. The overall results of the archaeological survey in the To Kwa Wan Station works site have been summarized in the final report that has been submitted to the Antiquities and Monuments Office (AMO) for comment.

3. While the future conservation and interpretation works related to the archaeological relics at the site (e.g. display of the relics) will be under the purview of the relevant Government bureaux and departments, the layout design of the To Kwa Wan Station has been modified following the Antiquities Authority's decision on the conservation options for the relics discovered (details are shown in **Annex 1**) as discussed in the AAB meetings on 20 November 2014 and 4 December 2014, in order to allow for:

- i. rearrangement of the permanent locations of railway facilities (e.g. ventilation facility and plant rooms), the original locations of which have been taken up by relics preserved in situ;
- ii. provision of cabinets inside the station concourse for display of artefacts;
and
- iii. flexibility for reinstatement of Well J2 at its original location.

An update on the progress of the above items is given in the following paragraphs.

PROGRESS UPDATE OF THE STATION MODIFICATIONS

Rearrangement of the permanent locations of railway facilities

4. The archaeological discoveries at the southwest corner of the station (i.e. Well J1 and some stone building features of Song-Yuan Period) overlap with the original position of the ventilation facility and associated plant rooms (details are shown in **Annex 2**). To enable in-situ preservation of the relics, the footprint of the station was modified such that this corner no longer formed part of the station. On the other hand, the footprint of the station concourse has been extended southwards to accommodate the plant room originally at the southwest corner, while the ventilation facility has been relocated to the north side of its original location. Associated construction method has also been adjusted to suit the modified station design.

5. The stone building features at the north side of the station, despite locating outside the station footprint, are within the original excavation area of the station. An additional pipe pile wall had been installed to protect the relics and separate them from the construction area. Construction of the station structure at their vicinity has been completed.

Provision of cabinets inside the station concourse for display of artefacts

6. It was mentioned in the AAB meeting on 20 November 2014 that some areas in the modified station concourse could be reserved to accommodate the display cabinets for displaying part of the relics unearthed. This has been taken into account during the revision of the station layout design, and the required space has been incorporated into the modified concourse area mentioned above.

7. The MTRCL has discussed and confirmed with AMO the technical requirements for the two display cabinets in station concourse, which are 7m and 15m in length. A photomontage showing the future concourse and the cabinets is shown in **Annex 3**. Mounting panels will be provided at the back of the cabinets and shelves can be mounted onto them for AMO to arrange items to be displayed. The cabinets will also be equipped with illumination, humidity control and security measures that are up to the standards required by AMO.

Flexibility for reinstatement of Well J2 at its original location

8. In the AAB meeting held on 4 December 2014, it was recommended that Well J2 and the associated water channel should be removed by hand after recording and reassembled later, and flexibility should be allowed in the modified station for reinstatement at their original plan position and level in future. Since the lower part of Well J2 intrudes into station concourse, the roof slab design of the station has subsequently been modified to form a concrete

trough in order to maintain flexibility for reinstating the Well J2 at its original level. The location of Well J2 and the concrete trough is shown in **Annex 4**.

9. With the trough in place, Well J2 can be reinstated to the original position and level, subject to the future conservation proposals. Design details of the trough were subsequently discussed and confirmed with AMO. Its dimension is determined by the size of the well, the flexibility of display and the smoke control requirements within the station. Normal passenger circulation in the concourse area would not be affected.

10. Allowance has also been made for replacing the concrete slab by a transparent panel at the bottom of the trough in future for viewing the well from the station concourse. Modification works will need to be carried out at the ceiling of the station concourse. It is anticipated that regular maintenance of the transparent panel and other associated fixtures will be required. Additional installations for fire safety and preventing water leakage will be necessary in order to ensure the safe operation of the station.

FUTURE WORKS

11. The future overall conservation and interpretation plan of the unearthed archaeological relics at To Kwa Wan will be determined by the respective Government bureaux and departments.

CONCLUSION

12. Members are invited to note the latest progress of the works at To Kwa Wan Station.

Conservation of Relics Found

Annex 1



Stone building features
(Preserved in-situ)



Red Brick Well
(Preserved by record)



Well J5
(Preserved in-situ)



Stone building features
(Preserved in-situ)

Legend

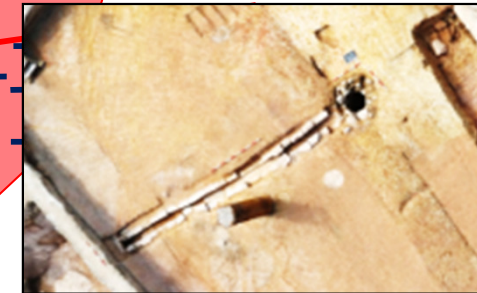
Station footprint



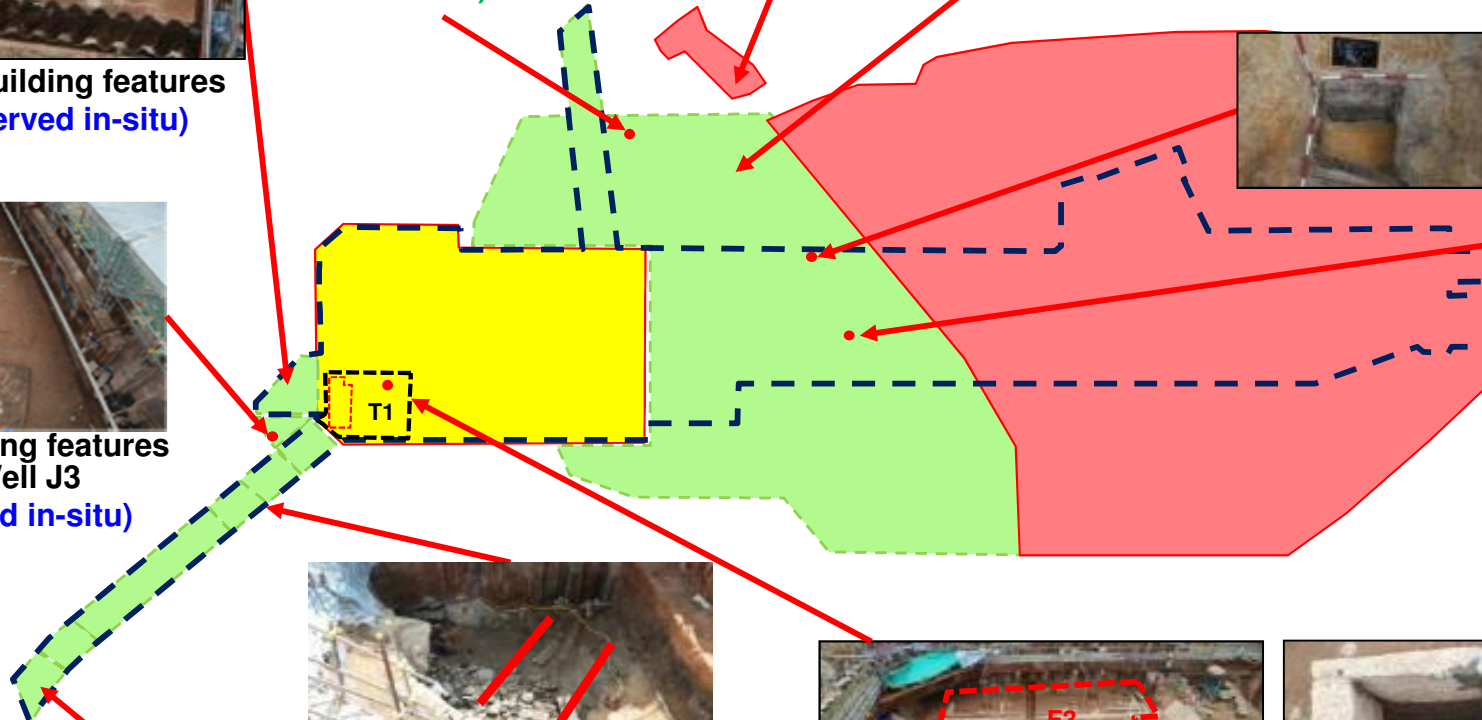
Stone building features and Well J3
(Preserved in-situ)



Wooden structure in a pit
(Retrieved off site for conservation treatment)



Well J2 and water channel
(Removed by hand after recording and reassemble later)



Stone structure
(To retain at this moment)



Stone footpath and stone structure which forms the riverbanks of the former Ma Tau Chung
(Preserved in-situ)

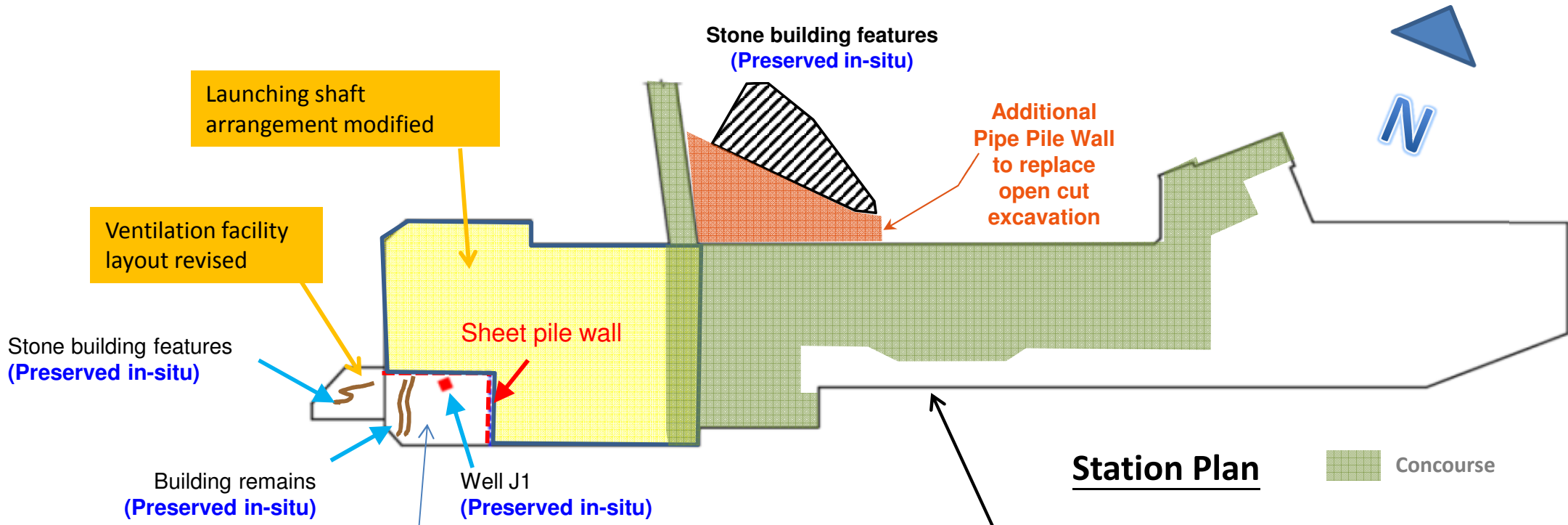


Building remains
(Preserved in-situ)



Well J1
(Preserved in-situ)

Conservation Scheme for T1 Area and the vicinity



Station area to be extended to accommodate plant rooms originally planned in T1 Area

Station Plan

Concourse

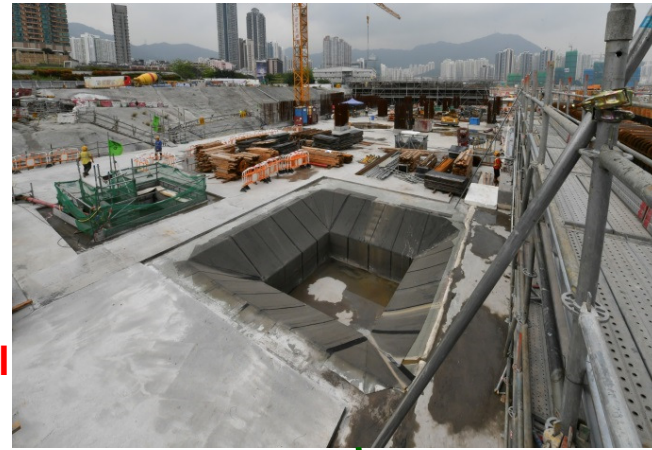
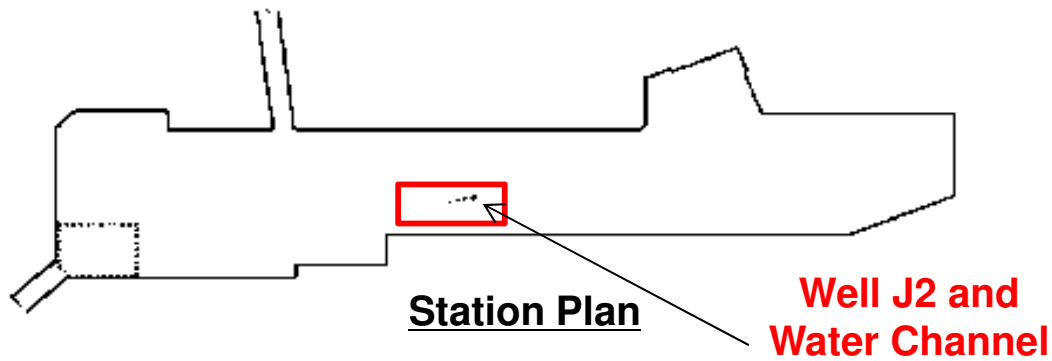
Display Cabinet at To Kwa Wan Station Concourse

Annex 3



Cabinets for display of
relics unearthed

Well J2 and Water Channel



Water Channel

