

**Photos of Bonham Road Government Primary School
No. 9A Bonham Road, Sai Ying Pun, Hong Kong**



The main façade of Bonham Road Government Primary School facing Bonham Road with both Chinese and English names on the parapet



Bird's eye view of the main building of Bonham Road Government Primary School, showing its E-shaped plan comprising a long centre portion and a wing on each end



The central staircase with a curved façade and a flagpole positioned centrally at the roof level



The fountain built of granite in front of the main building



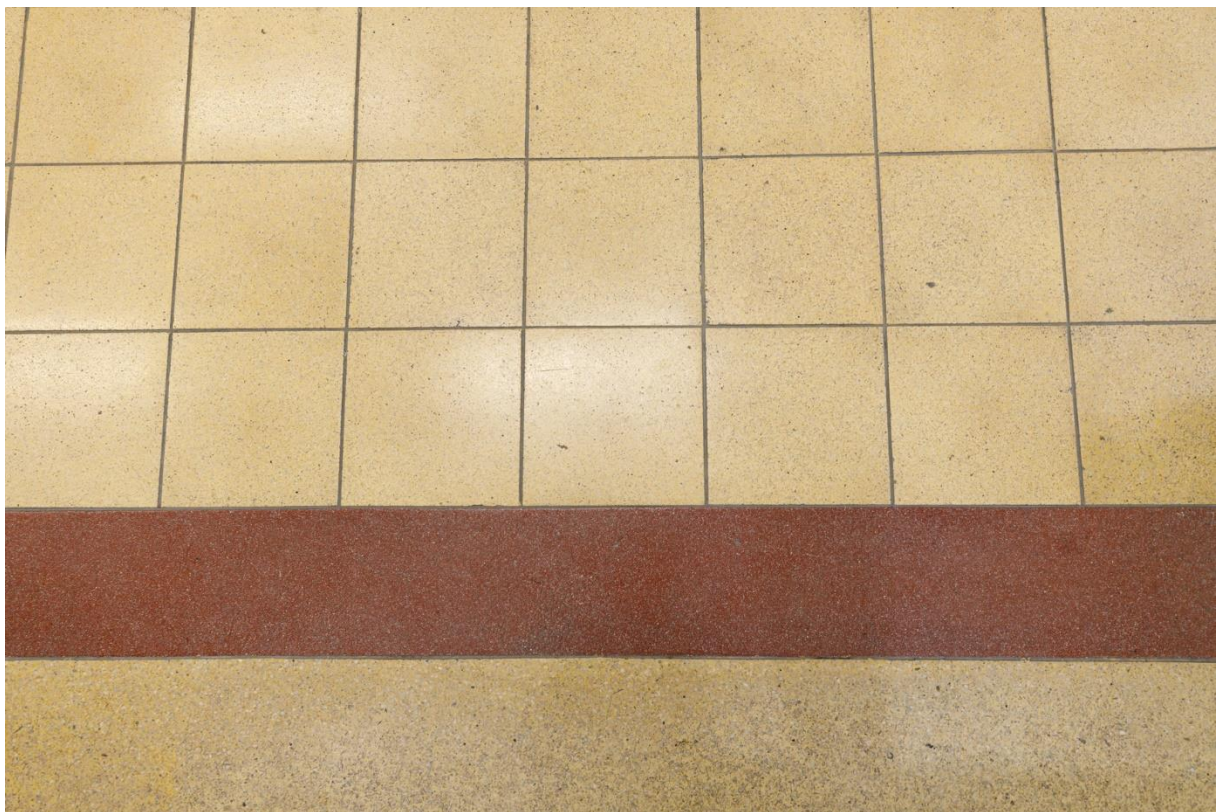
The trace of the name “Northcote Training College” at the main entrance on the south elevation of the main building



Windows rising progressively up the stairs enhances the aesthetics of the main building



The central spiral staircase with terrazzo finishes



Cement tiles and terrazzo floor finishes



The three skylights on the roof have been blocked



Pitched beams and the undersides of the blocked skylights made up of timber frames and glass panes could be found above the false ceiling in the Art Room on the second floor



The timber doors, steel-framed windows with patterned or plain glass panes, and the old-styled ironmongery are all well maintained



The two-storey former caretaker's quarters situated near the entrance gate on Eastern Street