

# 考古文物保育方案

## Conservation Options for Archaeological Features Discovered



石砌建築遺蹟  
Stone building features  
(原址保留 **Preserve in-situ**)



紅磚井  
Red Brick Well  
(記錄方式保存  
**Preserve by record**)



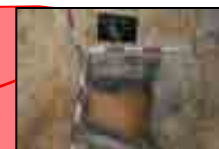
J5井 Well J5  
(原址保留  
**Preserve in-situ**)



石砌建築遺蹟  
Stone building features  
(原址保留 **Preserve in-situ**)



石砌建築遺蹟及J3井  
Stone building features and  
Well J3  
(原址保留 **Preserve in-situ**)



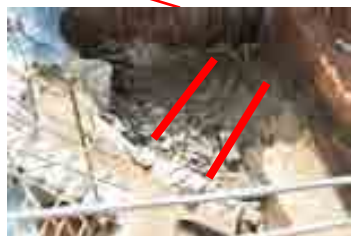
坑中木質結構  
Wooden structure in a pit  
(已移走作保育處理  
**Retrieved off site for  
conservation treatment**)



J2井和引水槽  
Well J2 and water channel  
(四個保育方案  
**4 Conservation options**)



石砌結構  
Stone structure  
(兩個保育方案  
**2 Conservation options**)



石砌路徑及前馬頭涌河岸的石結構  
Stone footpath and stone structure  
which forms the riverbanks of the  
former Ma Tau Chung  
(原址保留 **Preserve in-situ**)



殘存房屋構件  
Building remains  
(原址保留 **Preserve in-situ**)



J1井 Well J1  
(原址保留 **Preserve in-situ**)

