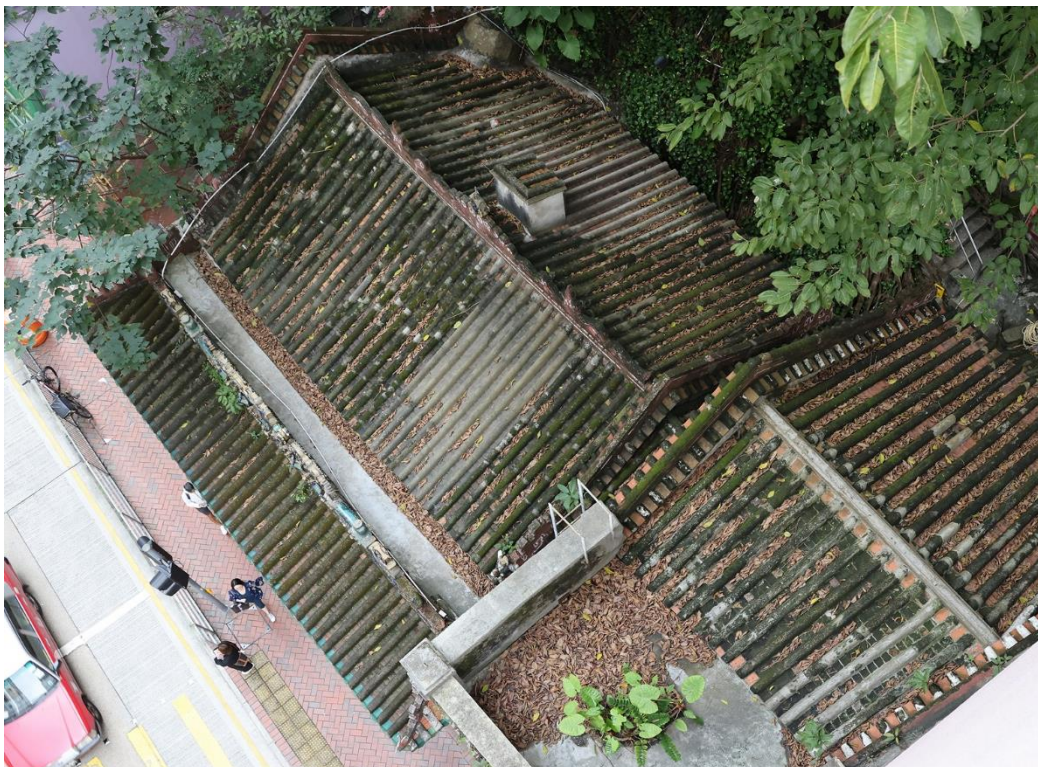


Photos of Hung Shing Temple

Nos. 129 & 131 Queen's Road East, Wan Chai, Hong Kong



Front elevation of Hung Shing Temple



Bird's eye view of Hung Shing Temple, showing the single-hall-three-bay layout fronted by an entrance porch.



The central granite balustrade of the entrance porch intricately carved with a motif of double dragons and a pearl (雙龍戲珠).



Square granite columns connected by “prawn beam” (蝦弓樑) (prawn-shaped tie beam) that features finely carved granite *geja* (隔架).



Exquisite Shiwán ceramic figurines on the ridge of entrance porch designed by Li Wanyu (李萬玉) and produced by Xu Zhiwen (徐志穩) and Xu Ronghui (徐榮輝) in 1909, depicting the fictional heroine Fan Lihua (樊梨花).



The granite-framed doorway that leads directly into the temple hall.



The main altar dedicated to Hung Shing is flanked by other deities, including Tai Sui (太歲), Pau Kung (包公), Lady Kam Fa (金花夫人) and Lady Fa Fan (花粉夫人).



The eastern and rear elevations of the temple hall integrate seamlessly with the natural rock formations.