



International Scientific Committee on Twentieth Century Heritage

isc20c@icomos-isc20c.org

78 George Street
Redfern NSW 2016
AUSTRALIA

International committee for
documentation and conservation
of buildings, sites and neighbourhoods of the
modern movement

do.co.mo.mo_



UNION INTERNATIONALE DES ARCHITECTES

12 June 2012

Mr Donald Tsang Yam-kuen

The Chief Executive

Hong Kong SAR Government

Office of the Chief Executive

Central Government Offices

Tamar, Hong Kong

By Email: ceo@ceo.gov.hk

Ref: Urgent Request to reconsider redevelopment Central Government Offices West Wing

Dear Mr Tsang

The International Scientific Committee on Twentieth Century Heritage (ISC20C) of the International Council on Monuments and Sites (ICOMOS) Docomomo International and the International Union of Architects (UIA) are all concerned to learn about the proposal to demolish the West Wing of the Central Government Offices (CGO) in Hong Kong, an important architectural component of the Government Hill historic precinct.

The threat of demolition and redevelopment of this important building in a sensitive historic precinct has been drawn to ICOMOS's attention by citizens of Hong Kong in recent months. A Heritage Alert request has now been investigated by the ICOMOS International Scientific Committee on Twentieth Century Heritage. The site was inspected from the public domain by the committee president last week, to better understand the cultural and social context of the complex.

We are pleased to note that the West Wing building is in active use and well maintained, but understand that many of its original government functions have recently been transferred to new facilities, and media reports suggest that a decision to demolish and redevelop the site for a commercial use may be imminent.

We are writing to respectfully ask that the demolition and redevelopment proposal for the West Wing be urgently re-considered by the government.

Recent research has established that CGO was an holistically designed architectural concept of three integrated wings, representing and allocated to the different functions of government:

- the East Wing housing the internal government office and also the ExCo(until 1991);
- the Main Wing acting as the Headquarters of the government and LegCo (until 1989) and
- the West Wing housing the government departments that served the public and the offices of LegCo members, so that members of the public could enter the West Wing building for government services or to consult LegCo members.

We note that the findings of the *Heritage Impact Assessment For The Former Central Government Office Relocation of the Department of Justice to the Former Central Government Offices (Main and East Wings)* 7 June 2012 (Final report) prepared by Architectural Services Department LWK Conservation Ltd state that:

The CGO Complex, being the place as a symbol of the highest administrative power since 1847, bears a very high significance towards the social, political and administrative development of Hong Kong from colonial period to SAR period until it ceased operation by the close of 2011. The site was also a work place of many prominent figures that have contributed their efforts to the development of Hong Kong and became part of Hong Kong's history.

As the last of the three buildings that make up the CGO complex, the West Wing is arguably the most sophisticated component, reflecting the final evolution of the design concept and architectural detailing for the complex in the building that was to be the community's interface with government. Its design was influential upon a range of buildings subsequently developed by the Hong Kong Public Works Department in the 1960s and 1970s, led by its chief architect, Michael Wright who with John Aitkin and John Charter, designed the CGO.

We have reviewed the *Historic and Architectural Appraisal* undertaken in 2009 and note its careful research, also its limitations. Today additional information about the origins of the CGO design concept and its role in Hong Kong's modern architectural development is available that was not then known or assessed. Archival research has since identified the specific architects responsible and obtained documentation about the building directly from Michael Wright, whose oral testimony regarding the design concept for the complex is apposite.

The LWK Heritage Impact Assessment of the work proposed on the East and Main buildings also recognises the significance of the CGO complex, without distinguishing between its three components:

To conclude, the CGO site is historically significant as the landmark in signifying the highest governing power of Hong Kong from colonial period to the establishment of HKSAR. Though this CGO is the 2nd generation Government building with 60 years of history, the structure is an early example of a modern reinforced concrete building construction being appeared in Hong Kong in post-war period. Most buildings constructed at that time have been demolished in past decades to make way for the post-modernism high-rise development.

However, the HIA fails to mention or assess the impact on the remaining buildings and on the historic precinct, of the potential loss of the West Wing.

The Hong Kong Institute of Architects has noted that:

"The disposition of the three existing wings in the CGO complex is the result of excellent site planning with the three building blocks well positioned in relationship to each other

and the natural landscape around them. Removal of the West Wing and building a new office tower on the site is like amputating an arm from an otherwise healthy and integral body and attaching an oversized prosthetic arm to the disintegrated body.”

These professional commentaries and the recent research all support the case for needing to review and update the 2009 Appraisal and extend the HIA process to include the West Wing.

It is our view that the significance assessment conclusions stated in the HIA prepared by ILK could equally apply to the West Wing and the case can be well made for the CGO as a whole meeting the criteria for heritage listing, within a Special Protected Zone. Given this level of heritage significance, the preparation of a Conservation Management Plan for the precinct, including a thorough examination of the adaptive re-use options of the CGO is needed to inform any decision on redevelopment or rehabilitation.

The world looks to China for inspiration in modern architecture and excellence in heritage conservation practice, and especially for adherence to *The Principles for the Conservation of Heritage Sites in China* 2002, the professional guidelines prepared within China's framework of laws and regulations relating to the conservation of heritage sites, which is endorsed by the State Administration of Cultural Heritage.

Beside the potential architectural and heritage loss, the demolition of the West Wing would be seen as a sign of departure from the widely acknowledged commitment of China to the protection and long-term conservation of its cultural heritage and historic sites of all periods, be they ancient or modern.

The Heritage Alert process uses the ICOMOS ISC20C's international professional and public networks to investigate local requests for international action when modern heritage sites are threatened, using external experts to assess research and analyse comparative values, in order to achieve a rigorous independent assessment of the situation.

The Heritage Alert review was undertaken by ISC20C members from Sweden, South Africa, the USA and Australia, who engaged with local citizens and reviewed the documentary evidence. It has concluded that there would be serious adverse impacts on the historic Government Hill precinct and the modern heritage of Hong Kong should partial or whole demolition of the West Wing be approved. Further, the dwarfing and marginalisation of the heritage precinct by the proposed new construction of a 32 storey commercial tower is not a compatible outcome in a generally low scale heritage precinct, which has always historically been the site of government administration and its public interface for the people of Hong Kong.

In cases such as the CGO, where the heritage values are well-proven, a Heritage Alert can be used to draw international attention to the threat and to promote good conservation solutions. The Heritage Alert which is attached to this letter will be uploaded to the ISC20C website and distributed through the networks of ICOMOS; Docomomo and the International Union of Architects. It will be updated as further information comes to hand.

The undersigned international presidents of the ICOMOS International Scientific Committee on Twentieth Century Heritage, Sheridan Burke (Australia); the President of Docomomo, Ana Tostões (Portugal) and the President of the International Union of Architects, Albert Dubler, (France) are unified in their concern about this proposal and urge the government of the SAR of Hong Kong to reconsider the current proposal, to eliminate its adverse impacts by retaining and re-using the West Wing and thus demonstrate its leadership in resolving appropriate conservation solutions.

We urge the SAR government to suspend the current proposal and to engage in a Conservation Management Plan process to ensure that the heritage significance of the Central Government Offices complex as a whole is retained as one of Hong Kong's landmarks of 20th Century architecture in its historic precinct setting.

All three organisations would be pleased to have an opportunity to discuss this further with you.

Yours faithfully,



Sheridan Burke

President, International Scientific Committee on Twentieth Century Heritage



Albert Dubler

President, International Union of Architects, UIA



Ana Tostões

President, Docomomo International

Attachment

Heritage Alert, prepared by Government Hill Concern Group

Copies to:

Gustavo Araoz, President ICOMOS

Tong Mingkang, President ICOMOS China

Mr Leung Chun Ying, Email: ceeo@ce-elect-office.hk

Mrs Carrie Lam Cheng Yuet-ngor Secretary for Development Email address: devbeng@devb.gov.hk, carrielam@devb.gov.hk

Mr. Bernard Charnwut Chan, Antiquities Advisory Board Email: amo@lcsd.gov.hk, bernie@bernardchan.com

Mr Ming Kay Chuen, Tom, Antiques and Monuments Office; Email: tkcming@lcsd.gov.hk

Mr. Thomas Chow, Town Planning Board ;Email: tpbpd@pland.gov.hk

Mr Dominic Lam, President [Hong Kong Institute of Architects](http://HongKongInstituteofArchitects.com) Email: dominic@leighorange.com.hk

Ms Katty Law Government Hill Concern Group; Email: ktylaw@gmail.com

国际古迹遗址理事会
20 世纪遗产国际科学委员会

2012 年 6 月 12 日

香港添马舰
政府总部行政长官办公室
香港特别行政区行政长官
曾荫权先生

电子邮箱: ceo@ceo.gov.hk

主题: 强烈要求对中区政府合署西座拆除开发计划予以慎重考虑

曾荫权先生:

香港中区政府合署西座作为政府山历史区域的重要建筑组成部分, 对于其拆除计划, 国际古迹遗址理事会 20 世纪遗产国际科学委员会、国际现代运动建筑遗址协会以及国际建筑师联合会均密切关注, 希望能够了解相关情况。

政府山历史区域一向受到关注, 西座又是非常重要的建筑, 其可能会被拆除、进行重新开发, 近几个月来在香港市民中间引起了强烈争论, 也引起了国际古迹遗址理事会的关注。国际古迹遗址理事会 20 世纪遗产国际科学委员会已经在考虑是否发出遗产警示, 上周, 委员会主席从公众视角对这一区域进行了考察, 以便更加充分地了解其文化和社会意义。

我们了解到政府合署西座一直都在使用当中, 而且维护得很好, 对此我们颇感欣慰, 但我们同时也知道此处的很多政府职能部门最近已经转移到新的办公地点, 而且根据媒体报道, 香港政府可能会很快做出决定, 将西座拆除, 用于商业开发。

因此我们特此谨致信香港政府, 询问是否能够重新考虑中区政府合署西座的拆除和开发计划。

最近的研究显示, 中区政府合署由三座建筑组成, 设计体现出建筑的有机整体性, 分配给政府不同部门使用:

- 东座为政务部门和行政局 (1991 年前);
- 中座为政府总部和立法局 (1989 年前);
- 西座为民政事务部门和立法局议员办事处, 所以公众经常进入西座大楼办理事宜, 或询问立法局议员。

我们注意到, 建筑署和 LWK Conservation Ltd 公司在 2012 年 6 月 7 日做出的《关于原中区政府合署律政司迁往原中区政府合署 (中座和东座) 的文物影响评估 (最终报告)》中, 指出:

中区政府合署建筑群虽然已经在 2011 年退出使用, 但自 1847 年以来, 这片区域一直是香港最高行政权力的象征, 而且见证了香港从殖民统治到回归祖国成为特别行政区这段时间内的社会、政治和政务发展。很多历史上为香港的发展做出过重大贡献的杰出人

物都曾在这里办公，因此这里已经成为香港历史的一部分。

西座是中区政府合署三幢建筑中的最后一幢，建成后成为了市民与政府间的交流纽带，一直有人认为它是最为突出的一幢，体现了设计理念和建筑细节的最终演化，对工务局之后在二十世纪六七十年代设计建造的建筑具有重大影响，该局首席建筑师正是与约翰·艾特肯以及约翰·查特一起设计了中区政府合署的迈克尔·怀特。

我们查阅了 2009 年进行的《历史和建筑评价》，在看到调研非常仔细的同时，也发现了一些局限之处，比如，对于中区政府合署设计理念的源头，以及它在香港现代建筑发展历史中的地位，当时还无从知晓，或者未能进行仔细评估，但今天我们能够知之甚详。通过搜索档案，我们知道了具体负责的建筑师，直接向迈克尔·怀特求得了建筑文件，而且他对中区政府合署的设计理念的评述应该是恰当的。

LWK 公司对中区政府合署中座和东座进行文物影响评估时，并未区分三幢建筑，而是对它们的整体意义进行了评价：

总体而言，中区政府合署具有非常重大的历史意义，从香港殖民时期一直到回归祖国成为特别行政区，这里都是香港最高统治权力的地标。中区政府合署虽然作为第二代政府办公大楼已经走过 60 年的历史，却是香港战后出现的现代钢筋混凝土结构建筑的早期代表，而在过去数十年间，为了给后现代高楼大厦腾出地方，当时建造的此类建筑已经几乎拆毁殆尽。

不过，上述文物影响评估报告并未说明和评估如果西座被拆除，将对余下的两幢建筑和整个历史区域产生何种影响。

香港建筑师学会指出：

“中区政府合署三幢建筑的分布体现了绝佳的空间规划，位置分布合理，而且与周围的环境完美融合。拆除西座，转而建设商业写字楼大厦，就像从一个原本体形完美、健康无缺的身体上切下一只胳膊，转而装上一个过大的假肢，体形自然不再匀称”。

以上专业看法和近期调查都表明，2009 年的《历史和建筑评价》需要重新审视和补充，并将西座纳入文物影响评估。

我们认为，以上文物影响评估报告中给出的重大意义结论同样适用于西座，中区政府合署作为一个整体符合文物标准，并应划定特别保护区，加以保护。考虑到如此重大的文物意义，应针对这一区域出台保护管理规划，任何再利用计划均应经过彻底论证，并及时公告所有再开发或修缮决定。

整个世界都在关注中国的现代建筑发展，关注中国的文物保护成果，尤其是关注中国是否能够遵守其在 2002 年通过的《中国文物古迹保护准则》，该《准则》是按照中国的法律法规框架，经中国国家文物局批准，为保护文物古迹而专门制定的文物保护指导原则。

中国做出过公开承诺，承诺将保护和长期妥善保管从古至今所有时期的历史文化遗产，而拆除西座不但会带来建筑和文物损失，而且与中国的此项承诺背道而驰。

按照国际古迹遗址理事会 20 世纪遗产国际科学委员会的规章，如任何地方的近现代文物受到威胁，根据文物警示程序，均可通过国际专业和公共渠道、响应当地公众要求国际社会行动的呼声，派遣国外专家评估研究状况，分析相对价值，以便对实际情况做出独立评估。

文物警示评估由来自瑞典、南非、美国和澳大利亚的 20 世纪遗产国际科学委员会委员承担，他们与当地民众交流，并查看各种档案证据。他们得出的结论是，如果中区政府合署西座部分或全部拆除计划得到批准，政府山历史区域和香港近现代文物都将受到严重负面影响。另外，这一区域一直以来都是香港政府办公所在地，也是香港民众与政府产生交集的地方，建筑都不高，而建造 32 层的商业大厦，只会让周围的文物建筑显得更加渺小，因此与周围环境根本不相匹配。

就香港中区政府合署而言，其文物价值已经得到充分论证，因此应该发布文物警示，以便让国际社会都认识到文物面临的风险，并促使文物获得更好的保护。本信后附的文物警示将很快上传到 20 世纪遗产国际科学委员会网站，并通过国际古迹遗址理事会、国际现代运动建筑遗址协会以及国际建筑师联合会等渠道，进行传播，并将根据最新情况予以更新。

国际古迹遗址理事会 20 世纪遗产国际科学委员会主席谢丽登·伯克（Sheridan Burke）（澳大利亚）、国际现代运动建筑遗址协会主席 Ana Tostoes（葡萄牙）和国际建筑师联合会主席 Albert Bubler（法国）均在信尾签名，表示对此事项的一致意见，要求香港特别行政区政府重新考虑目前的拆除计划，保留并重新启用中区政府合署西座，出台适当的保护计划。

我们要求香港特别行政区政府暂停目前的拆除计划，尽快起草保护管理规划，以确保中区政府合署的整体文物价值得以保留，因为它毕竟是香港历史区域内的 20 世纪建筑典范之一。

上述三个组织愿意与香港政府就此事项做进一步讨论。

此致

谢丽登·伯克（Sheridan Burke）（签名）
20 世纪遗产国际科学委员会主席

Albert Bubler（签名）
国际建筑师联合会主席

Ana Tostoes（签名）
国际现代运动建筑遗址协会主席

附件
文物警示（政府山关注组起草）

抄送：
国际古迹遗址理事会主席古斯塔夫·阿罗兹先生（Gustavo Araoz）
中国古迹遗址保护协会理事长童明康先生

梁振英先生，邮箱：ceo@ce-elect-office.hk

香港发展局局长林郑月娥女士，邮箱：devbenq@devb.gov.hk, carrielam@devb.gov.hk

香港古物咨询委员会陈智思先生，邮箱：amo@lcsd.gov.hk, bernie@bernardchan.com

香港古物古迹办事处明基全先生，邮箱：tkcming@lcsd.gov.hk

香港城市规划委员会周达明先生， 邮箱：tpbpd@pland.gov.hk

香港建筑师学会会长 Dominic Lam 先生，邮箱：dominic@leighorange.com.hk

政府山关注组罗雅宁女士，邮箱：ktylaw@gmail.com

Government Hill Concern Group

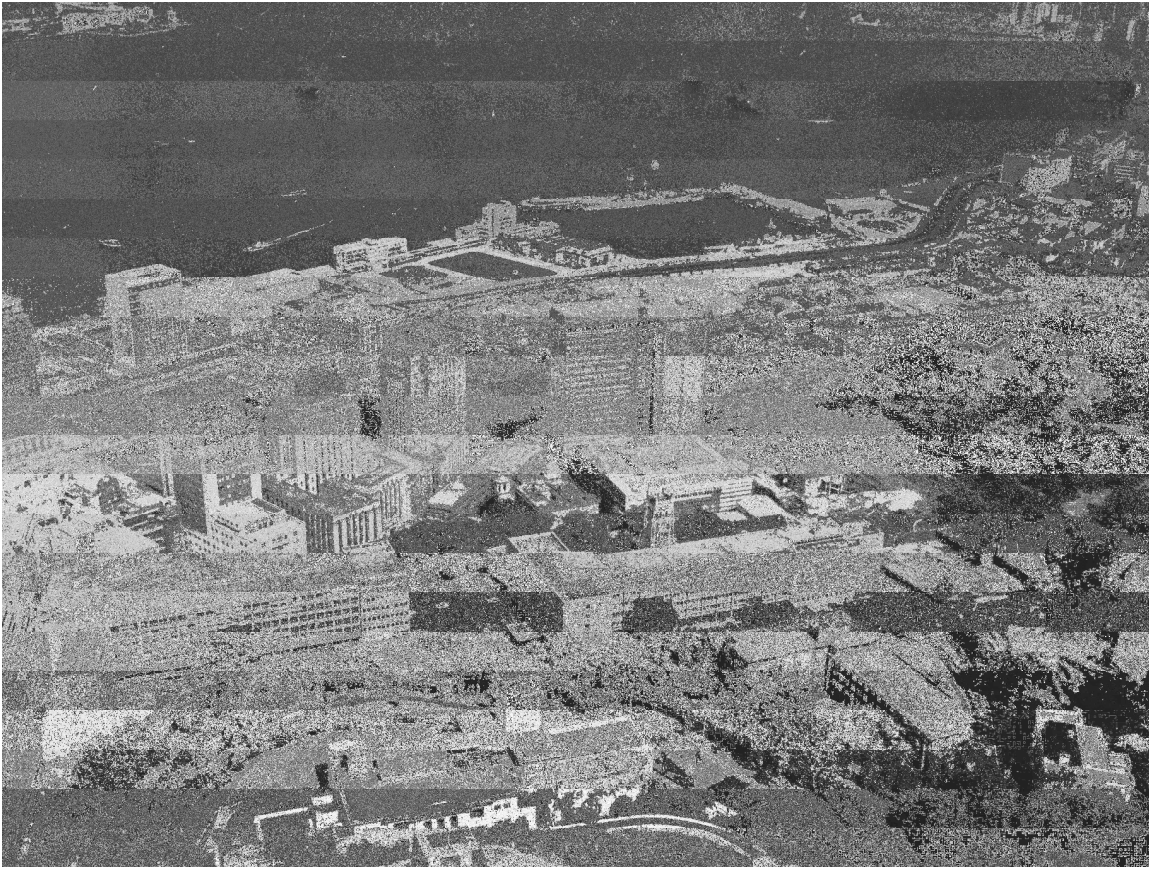
**Proposal for Heritage Alert Action for the
West Wing, Central Government Offices on Government Hill,
Hong Kong SAR
to the
ICOMOS International Scientific Committee on
20th Century Heritage**



June 2012







Executive Summary

Hong Kong's 170-year-old Government Hill is currently under threat by a government plan to redevelop a large part of the area for commercial development. The site slated for demolition and redevelopment is a 20th century heritage - **the Central Government Offices West Wing** – which was built in the 1950s with the East and Central Wings to provide centralized accommodation for all government departments. It is a fine example of 1950s Modernist architecture in Hong Kong.

Government Hill has a history as long as Hong Kong's colonial history. In 1841, not long after the British landed in Hong Kong, the colonial government designated an area in Central District as its political, administrative and religious centre with the Governor's residence, government offices and the cathedral in close proximity. Local historians have remarked that this is probably the last remaining heritage precinct in Hong Kong. A conservation consultant report commissioned by the Hong Kong Government recommends establishing a Special Protected Zone to conserve this entire unique low-rise, wooded historic area.

With the completion of a new government headquarters in 2011, the government plans to take forward a redevelopment scheme and demolish the West Wing. The site will be excavated to make way for a huge underground facility and a 32-storey office tower which will overwhelm the surviving East and Central Wings and other 19th century historic buildings in the area, thus significantly compromise the landscape setting of the Government Hill as a whole. The redevelopment will commercialize a site which has historically been the seat of Government in Hong Kong. The excavation will destroy historic World War II air-raid tunnels underneath Government Hill which are also 20th century heritage.

The disposition of the three existing wings in the CGO complex is the result of excellent site planning with the three building blocks well positioned in relationship to each other, to the Government House and to the natural landscape around them. Removal of the West Wing and building a new office tower on the site is like amputating an arm from an otherwise healthy and integral body and attaching an oversized prosthetic arm to the disintegrated body.

We are calling for immediate international action to stop this destruction and save this important 20th century heritage of Hong Kong.

1.0 Identity of Building/Place

1.1 Current name: Central Government Offices (CGO)

Original name: same as above

1.2 Location: Central District, Hong Kong Island, Hong Kong

1.3 Classification/Type of place: government offices/headquarters (until end 2011)

1.4 Current heritage protection status: no protection

2.0 Statement of Significance/History

2.1 Statement of Significance

The CGO lies at the heart of Government Hill which has been the seat of Hong Kong's government for 170 years. As the chief government offices (up until end 2011 when government moved its headquarters to Tamar on the Victoria Harbour foreshore), the CGO was where important governmental functions were performed and important political decisions about Hong Kong were made. It is significant politically as the home to many important government departments and political figures, and having been home to both the British colonial government and the HKSAR (Hong Kong Special Administrative Region) government after the return of sovereignty to The People's Republic of China in 1997.

The CGO is socially significant as the site for public protest – it is an important civic space in Hong Kong where citizens expressed their opinions against government policies.

Architecturally, the CGO is important as one of the best preserved examples of 1950s Modernist Functional architecture in Hong Kong and in the region. The design level of Hong Kong Modernist buildings was comparable to that of the best works of architecture in the world at that time. Its Modernist design could have influenced the design of other buildings in the territory in that period.

2.2 History of place

Hong Kong was a small fishing village on the southern coast of China when it was taken over by the British after China lost the First Opium War in the early 1840s. Not long after the British took control of Hong Kong Island, the ridge between Albany Nullah and Glenealy Nullah on the northern slope of the island was reserved for Crown use and subsequently named Government Hill. The history of the CGO must be understood in the context of the Government Hill historic urban landscape.

A series of buildings and structures were constructed on Government Hill over the years, including the Governor's residence, a battery (Murray Battery), government offices, a church and a footpath leading up to Government Hill. All are set within wooded and landscaped grounds.

There were plans for the total redevelopment of Government Hill in the 1930s but they were aborted due to strong opposition by the new Governor. Government Hill survived World War II and the Japanese occupation. A network of air-raid tunnels and shelters was constructed underneath

Government Hill in 1940-41, some of which still exist today.

After the war, the government drew up a redevelopment plan in order to provide centralized accommodation for all government departments. The old government offices and some temporary buildings located on the site of the Murray Battery were demolished to make way for the new CGO, which was completed in 1959.

The CGO continued its function through the end of the British rule and after Hong Kong became a Special Administrative Region of The People's Republic of China in 1997. It bears witness to the transfer of power and the change of sovereignty over Hong Kong.

From the mid 1990s, the CGO had been the site of many public protests and calls for democracy and rights. For example, the annual July 1 march had for years made CGO its destination. The CGO is an important site where Hong Kong people engage with the government directly.

At the end of 2011, the HKSAR government moved its headquarters to Tamar and put forward plans to sell and redevelop the West Wing site.

2.3 Date of project/Date of Construction/Finishing of work

The need for new Government Offices in Hong Kong was recognised as early as 1946 to house expanding government departments in a central location. Initial plans for the site date from 1946. By 1950-51 preliminary designs for the CGOs were completed. The complex was designed as a totality but the detailed design and construction was completed in stages. The dates of construction for the individual buildings are as follows:

- Construction on the East Wing commenced in 1952 and was completed in 1954.
- Construction on the Central Wing commenced in 1954 and was completed in 1956.
- Construction commenced on the West Wing in 1957 and was completed in 1959.

2.4 Architect/designers

The CGO was designed by the Architectural Office of the Hong Kong Government Public Works Department. The Chief Architect was Michael Wright. The East and Central Wings were designed by a staff architect John Charter. The West Wing was designed by another staff architect, John Aitken.

2.5 Architect Designers still living? Residence, country of birth contact

Michael Wright is alive, now 99 years old. His contact details can be provided on request. A video interview with Mr Wright can be viewed at the following location: www.governmenthill.org
Some background information:

Michael Wright (1912-)

Joined the Hong Kong Government in 1938

Chief architect for the Central Government Offices

Designed the Star Ferry clock tower

Director of Public Works (1963-69)

Involved in numerous Hong Kong's public housing and infrastructural projects including the Mass

Transit Railway, Cross-Harbour Tunnel, reservoirs and new towns
Founding member of the Hong Kong Institute of Architects
Lai Tak Estate was named after him

John Aitken, the architect of the West Wing, passed away two years ago. A statement about Mr Aitken, prepared by his daughter is attached in Appendix 3. Cinefilm footage taken by John Aitken in 1957-59, showing the site formation and construction of the West Wing, can be found in our website www.governmenthill.org

John Charter, deceased.

2.6 Original and current use of building/place

The CGO was designed to be used as government offices. It continued in this function until late 2011 when the government offices moved to a new government complex, Tamar, located on the foreshore of Victoria Harbour. To date, there are still a few offices remaining in the West Wing and since late March 2012 the interim office of the Chief Executive-Elect Leung Chun Ying has been occupying the 12th floor of the West Wing before it will move to Tamar on 1 July, 2012.

2.7 Changes, additions

There have been changes and additions to the CGOs since the complex was completed. In general terms, these comprise additions to the buildings to increase floorspace or to alter the existing configuration / design of the buildings. The major changes to the CGO are as follows.

- An additional floor was added to the West, Central and East Wings to increase floorspace.
- The creation of a landscaped courtyard in 1975 adjacent to the Legislative Council Chamber in the Central Wing.
- An extension to the Central Wing was completed in 1991. Called the 'New Annexe', it was built to provide more space for the Executive Council and resulted in the demolition of the fan-shaped Legislative Council Chamber on the site. The 'New Annexe' was designed to virtually match the façade of the Central Wing.
- Various internal office refurbishments.
- The construction of a security fence around the perimeter of the site in 2001 which prevents members of the public from walking through the site from Battery Path to Lower Albert Road.
- The entrance hall of the West Wing at the Lower Albert Road level was extended to provide more space.

2.8 Current condition

The buildings are currently in good condition having been used as government offices until late 2011. Most of the offices are now vacant, except a few government offices and the interim office of the Chief Executive-Elect occupying some of the floors.

2.9 Original design intent

The CGO, although built in three separate phases, were conceived and planned as a single complex. It was intended to be large enough to centralize and house the majority of government

departments for many years. One of its aims was to improve staff welfare and working conditions, eg. the CGO was the first government building in Hong Kong to be fully air-conditioned, and its design incorporated facilities such as a canteen, common room spaces and a dental clinic.

The east-west orientated CGO complex was designed in relation to the central axis of Government House and the low height of the buildings was intended to preserve the view to the north from Government House. This enabled a view with the CGO (in the foreground), the commercial buildings of Central, Victoria Harbour, Kowloon and the mountains in the New Territories to be preserved.

Another important design intent is the way in which the buildings respond to the topography of Government Hill. This is particularly evident with the West Wing which was built on the sloping part of the site. A part of the West Wing sits on the top of the slope on the level of Lower Albert Road and another part comes down to the Queen's Road Central level. Elevators in the West Wing allowed users of the CGO and members of the public to go from Queen's Road Central to the Central and East Wings on Lower Albert Road and the upper reaches of Government Hill.

3.0 Description (history and technology)

3.1 Physical description

The CGO comprises three buildings. The West Wing is located at the western end of the site and is an 'L' shaped building with frontages to Ice House Street, Queen's Road Central and Lower Albert Road. The main entrance to the building is from the west in Queen's Road Central / Ice House Street, at this point the building rises thirteen floors. At the eastern end there is an entrance facing the Central Wing, this is on the seventh storey with six storeys above. The Central and East Wings of the CGO are connected and form a 'T' shaped building. They have frontages to Lower Albert Road and Garden Road and are located adjacent to St. John's Cathedral (a Declared Monument). The entrance to the Central Wing is accessed off Lower Albert Road, the entrance to the East Wing is located on the corner of Lower Albert Road and Garden Road. Completed in 1959, the CGO complex also has Hong Kong's first underground carpark which can park up to 100 vehicles. See Appendix 6.

3.2 Construction system used

The construction system of the CGOs is by means of concrete frame construction with exposed concrete frame facades and flat roofs. The load bearing structure of the three buildings consists of reinforced concrete frames with shear walls in core areas and end walls on raft foundations. The vertical load bearing elements in the main office areas are formed by a regular column grid defining a central corridor and denser spaced fins on a subdivision by 2 or 4 in the facades. In the open areas on the ground floor of the east and west wings and in the canteen, the structural elements in the facade plane are reduced to the main grid.

The planning grid for all three wings is based on a 9 feet square for a flexible subdivision into offices of various sizes. If half of this – 4.5' – is taken as a module, the resulting spacing of the main structural elements is 2x4 for corridors and 4x4 for offices, with 4x5 for one side of west wing. The spacing of the vertical fins in the facade is 1 for the east and central wings and 2 for the west wing. In the east and west wings, the main office area consists of four structural sections, each with a length of 16 modules.

The structural elements in the office facades are combined with horizontal elements to form various types of grids providing a certain degree of shading, one variation in the east, one in the central and two in the west wing. The original finishes of these grids were shanghai plaster. The infill consisted, depending on the location, of shanghai plaster or mosaic tiles. The consistent contrast between this type of facade and the granite clad end walls and blocks results in a unified expression defining a common character, whereas the variations create richness and allow differentiation.

The ground floor of the central wing is clad with slate, forming a base. The fins on the parapet level of the upper floors are shifted to the centres of the windows and the infill finished with green mosaic tiles. These differences from the east and west wing give it a distinct expression and support the special importance of the central wing as the Secretariat. The main central wing facade could almost daily be seen in the news on television and therefore became the face of the government.

3.3 Context/setting

The CGO are located in Central district, Hong Kong. Central is the historic heart of Hong Kong and is the site of many significant civic and commercial buildings. Most of Central is densely developed with commercial properties. The CGO is located on the historic Government Hill and it shares Government Hill with St John's Cathedral (the Anglican Cathedral for Hong Kong), the Former French Mission Building (now Court of Final Appeal) and the Government House. All of these buildings are 19th century historic buildings and declared monuments. Battery Path runs between the corner of Queen's Road Central/Ice House Street, the Former French Mission Building and the CGO.

Government Hill is a distinctive area in Central district in that it is not densely occupied by buildings and contains significant areas of landscaping, particularly in the area around Battery Path. The topography of Government Hill varies significantly, from very steep gradients around Battery Path to quite level areas around St John's Cathedral.

To the south of the CGO, between Lower Albert Road and Upper Albert Road, is Government House (1855) which is set in a large garden with many mature trees. Government House was the official residence of the Governors of Hong Kong until the colony was handed back to the People's Republic of China in 1997. Today it is the official residence of the Chief Executive of the Hong Kong Special Administrative Region. To the south of Government House, and above Upper Albert Road, is the Hong Kong Zoological and Botanical Gardens which dates from the 1860s and is over 5 hectares in area. Government Hill, Government House and the Zoological and Botanical Gardens are notable in Central for being extensively landscaped, in contrast to the heavily built up commercial properties which typify the area.

To the west of Government Hill are commercial properties of Central, typically retail and office accommodation.

To the north of the site is Statue Square which contains the Former Supreme Court Building by Aston Webb (1912), the Hong Kong Club by Harry Seidler (1984), the Cenotaph and Hong Kong City Hall by Ron Phillips and Alan Fitch (1962). The Hongkong and Shanghai Bank building by Norman Foster (1985) is located between Government Hill and Statue Square. Chater Garden is located to

the east of Statue Square.

To the east of Government Hill is Murray Building by Ron Phillips (1969) which was used by the government for office accommodation. The Murray Building is flanked by the St John's Building and the Citibank Building. To the east of the Murray Building is Hong Kong Park, formerly Victoria Barracks which contains Flagstaff House.

3.4 Social and cultural context

The CGO form buildings designed for the governing and administration of Hong Kong. They occupy the site on Government Hill which has been the place of government administration in Hong Kong since the earliest days of the Colony, and which continued after the handover to the People's Republic of China in 1997 and ended only in late 2011 with the completion of the new government complex at Tamar.

Specifically, Executive Council (ExCo) meetings were held in the CGO on a weekly basis. Until 1985 when it moved to the Old Supreme Court Building, the CGO was also the site of the Legislative Council (LegCo) where lawmakers deliberated, the Governor gave his annual address and where the annual government budget speech was made. The CGO therefore have significant place in the social history of Hong Kong as many of the government decisions which have impacted upon the lives of Hong Kong citizens have been made in the CGO. The Development Bureau's proposal to demolish the West Wing and permit a private developer to construct a commercial office building will partly commercialise the site which has historically been the seat of government in Hong Kong (during both the colonial and post-colonial periods).

The social importance of the CGO, of which the West Wing forms a part, also derives from it being a place where individuals or groups within Hong Kong society interacted with the government. For many years the entrance to the Central Wing was the location where television news crews would set up their cameras to do daily television news reports about government announcements or activities.

An important feature of the West Wing was the entrance on the corner of Queen's Road Central and Ice House Street which was intended to be the public entrance to the building. In the foyer was a reception area for the Hong Kong Government Public Inquiry Service (in the 1960s) which had a wide-ranging remit to assist members of the public in a wide range of matters relating to daily life in Hong Kong. There was also a payment office and a public washroom entered from the Ice House Street side of the West Wing, which were also windows of the government towards the public for many years. Michael Wright, chief architect of the CGO, mentioned a special feature of the West Wing was the lift access that allowed members of the public to go from Queen's Road Central to Lower Albert Road – a great convenience in those days before the barriers were set up.

The CGO is also socially significant as it has been the focus of public discontent at the activities and policies of the Hong Kong government. These have ranged from individuals protesting about a particular personal grievance concerning the government to mass demonstrations and marches. Very often, protesters walked up to Government Hill via Battery Path and most protests ended in the courtyard between the Central Wing and the West Wing, under the century-old Burmese Rosewood.

3.5 Materials/fabric/form/function

The East, Central and West Wings all share the same materials, namely, exposed reinforced concrete frames and steel framed Crittall Universal windows. Granite was used to differentiate parts of some of the buildings such as entrances or other elements of the buildings (for example the granite 'base' to the ground floor of the West Wing on the Ice House Street Frontage). The Purcell Miller Tritton LLP study '*Historical and Architectural Appraisal of the Central Government Offices*' indicates that the original surface rendering to the exterior of the West Wing (and presumably the other buildings in the complex) was 'Shanghai Plaster' which comprises cement, sand and granite chips in a 1:3:4 mix (p. 119). Slate panels were initially installed on parts of the façade of the West Wing, but were replaced with mosaic panels after problems with staining.

Michael Wright, chief architect of the CGO, specifically noted the trouble and care that officials went into to source high quality non-staining granite from quarries in Hong Kong. Eventually, after an expert from Hong Kong University tested several samples, stone was selected from a quarry in Diamond Hill. This stone was used to clad the façade of the West Wing building which faces Ice House Street and possibly other parts of the complex as well. The use of local granite in building the CGO is further discussed in Appendix 5.

The form of the buildings is recognisably Modernist and is typical of low-rise Modernist office buildings of the time. They are sensitively designed in relation to the sloping nature of the Government Hill site and do not seek to dominate their surroundings, in contrast to the adjacent commercial high-rise development. The West Wing is particularly notable for the way in which the design enables the contour of the hillside to be read when seen from Queens Road Central, as the site slopes steeply downwards to the west. This feature of the building is important as it is a particularly fine example of building on sloping sites in Hong Kong which resulted in the completed building blending harmoniously with the natural landscaping and vegetation on slopes. The 'climbing' design of the building to suit the topography of the site results in plan area changes at each level uphill in response to the topography. This is in complete contrast with typical Hong Kong contemporary design practice where the site is flattened, the remaining slope behind stabilised with concrete, and a podium constructed with a tower above. The Development Bureau's development proposal for the West Wing site is typical of this practice which would result in large-scale formation works, defacing the existing sloping terrain of the site.

The idea of a street in the sky which originates from Le Corbusier and was realised also by Alison and Peter Smithson in England, has several implementations in Hong Kong. From the six Police Married Quarters designed by the Public Works Department in the 1960s with streets in the air, only the one in Aberdeen remains. Hing Wah and Kwai Shing West estates from the mid 1970s by the Housing Authority use a variation in which a lift tower brings people to a street in the air which will lead horizontally back to ground level again on a steep slope. The West Wing can be considered a precursor of these with an internal lift. The Public Works Department used this idea shared with architects internationally at the time, applied it to local conditions, developed the idea further in impressive projects and influenced the design of public housing by another institution.

The appraisal report by Purcell Miller Tritton describes many aspects and parts of the buildings of the Central Government Offices. But if we understand architectural design as relating to the basic aspects like site, programme, construction and form and giving order in forming a whole out of the parts, the report doesn't mention the high level of design knowhow which the Government Offices represent. The West Wing is in this respect the most complex of the three wings. An example is the way it sits on the land, has different scales as part of the city on Queens Road and Ice House Street

and part of a park along Lower Albert Road and forms spaces which establish relationships to neighbouring buildings. Another is the differentiation of the load bearing structure to allow for offices of different sizes, to provide shading for the windows and to give expression to the facades. Many specific facets which the building still today reveals to a careful observer can't be explained only as the fulfillment of a functional requirement, but are the result of deliberate design in which each built piece links several ideas.

The height of the CGO buildings was carefully considered to preserve the views from Government House (located on the hill to the immediate south of Government Hill). Both the East/Central Wings and the West Wing were sited to be on either side of the central axis of Government House. Should the West Wing be demolished, this relationship would be lost forever.

The CGO are particularly notable as they incorporated progressive technology and office facilities for the time in Hong Kong with the intention of providing a better working environment. The CGO was the first government building in Hong Kong to be fully air-conditioned and to incorporate staff facilities such as canteens, common spaces, and even a dental clinic.

In this respect their design has been successful as they have fulfilled the function of office / administrative buildings, adapting to the changing needs of the government departments which have occupied the buildings. Each building has narrow floorplates to allow natural light to penetrate the buildings and have separate load bearing and non-load bearing elements to enable the office accommodation to be reorganized at will by means of demountable partitions.

3.6 Aesthetic value

The CGO are of aesthetic value as they are one of the very few remaining Modernist civic buildings from the 1950s / 1960s remaining in Hong Kong. Although the complex was planned as a whole, there are subtle differences in style between the East, Central and West Wings.

The East Wing (the earliest of the group to be built) uses granite cladding and some subtle Art Deco-inspired decoration to the entrance on the corner of Lower Albert Road and Garden Road. The Central Wing dispenses with these decorative elements and the West Wing (the last Wing to be constructed) has the most functional-appearing design of the group. In this sense, the CGO complex appears to demonstrate a subtle shift in design thinking within the Government Architectural Office and within the upper echelons of the Colonial administration.

A letter dated 9th February 1951 stated that the design of the buildings was long and low both for aesthetic reasons and because there would not be interference with the view from Government House. This shows how the CGO complex was designed with the surrounding buildings and environment in mind.

The Hong Kong Institute of Architects stated the following in its submission to the government dated 31 December 2010: "The disposition of the three existing wings in the CGO complex is the result of excellent site planning with the three building blocks well positioned in relationship to each other and the natural landscape around them. Removal of the West Wing and building a new office tower on the site is like amputating an arm from an otherwise healthy and integral body and attaching an oversized prosthetic arm to the disintegrated body."

4.0 Source of Alert

4.1 References, contacts

This alert has been prepared by the Government Hill Concern Group.

Website: www.governmenthill.org

Contact: Mrs Katty Law, convener, Government Hill Concern Group

Telephone: (+852) 9026 6187

Email address: ktylaw@gmail.com

4.2 Groups supporting Alert and/or nomination, contacts

The Government Hill Concern Group is an alliance of 21 environmental and heritage conservation groups and concerned professionals and members of the public:

Central and Western Concern Group, The Professional Commons, Designing Hong Kong, Green Sense, Greeners Action, The Conservancy Association, Heritage Watch, Community Alliance for Urban Planning, Community Development Initiative, Save Our Shorelines, Lung Fu Shan Environment Concern Group, HK Redevelopment Concern Group, Heritage Hong Kong, Clear the Air, Green Environmental Health Group, South Tokwawan Concern Group, Society for Protection of the Harbour, Soho Residents Committee, Mini Spotters, World City Committee, Dragon Garden Charitable Trust

The Government Hill Concern Group also made a town planning application in early 2011 to zone the CGOs as a heritage precinct and the application was supported by over 6000 members of the public and groups through letters or signatures of petition.

4.3 Groups potentially against Alert action

The Development Bureau of the Government of the Hong Kong Special Administrative Region which put forward the sale and redevelopment plan of Government Hill/CGO West Wing.

Postal address: 18/F, West Wing, Central Government Offices, 2 Tim Mei Avenue, Tamar, Hong Kong

Telephone: (+852) 3509 8800

Fax: (+852) 2845 3489

Email address: devbenq@devb.gov.hk

4.4 Local, Regional, International significance citations

a) *The Greatest Form Has No Shape – three exemplary works of Hong Kong modern architecture* – an exhibition and publication by Professor Vito Bertin, Gu Daqing and Woo Pui-leng of the School of Architecture, Chinese University of Hong Kong (2011).

The significance of the CGO West Wing was studied and presented in this research project. Copies of this publication has been sent to the committee by post.

b) The Antiquities and Monuments Office (AMO) of the HKSAR Government has commissioned Purcell Miller Tritton LLP, a British firm of conservation architects, to conduct a consultancy study 'Historical and Architectural Appraisal of the Central Government Offices'. The study was completed in September 2009 and can be accessed at

http://www.amo.gov.hk/en/research_cgo_20091015.php

This is a detailed historical and architectural appraisal of the CGO - it acknowledged the significance of the CGO and recommended setting up a "Special Protected Area" to preserve the cultural landscape of Government Hill. However, the government has deliberately taken ideas out of context to say that the CGO West Wing is "unimportant" thereby justifying the sale and redevelopment of that part of the site.

c) Forum UNESCO – Univeristy and Heritage issued a "*Call for Academic Support – HK Government Hill at threat*" on 9 September 2011

4.5 Letters of support, newspaper articles etc.

There are numerous letters/articles of support for keeping West Wing on local newspapers' letters to the editor page, opinion articles and editorials, such as the South China Morning Post (local english-language newspaper) and other local magazines. There were over 6000 submissions/signed petitions to the Town Planning Board in support of protection of the CGO as a heritage precinct. Many professional groups made submissions with a range of support for the CGO's preservation. Copies of these letters and news articles can be provided if required. Extracts from some of the submissions made by professional and community groups are provided in Appendix 1.

A set of submissions in support of saving the West Wing by the Hong Kong Institute of Architects will be sent via email attachment with this submission. Also a scan copy of U Magazine (03.02.2012) with a feature story titled "Our Government Hill" and Ming Pao Weekly (10.03.2012) with a feature story titled "Who steals Government Hill?" are attached.

Mr John Hurd, President of the ICOMOS Advisory Committee, was interviewed by a Radio Television Hong Kong news reporter recently in an international heritage conservation conference in Hong Kong (12 December 2011). He said that it's important to preserve Government Hill in its entirety:

International call to preserve Government Hill (12-12-2011)

http://rthk.hk/rthk/news/englishnews/20111212/news_20111212_56_804505.htm

Mr Michael Wright, chief architect of the CGO, has spoken via a video interview (conducted in December 2011) in support of the conservation of the entire CGO complex as a whole. A selection of his quotes can be found in Appendix 2. The video can be viewed in www.governmenthill.org

Mr Ronald Phillips, co-architect of the Hong Kong City Hall and a contemporary of Michael Wright and John Aitken, has written a statement in support of the conservation of the CGO West Wing. His statement can be found in Appendix 4.

4.6 Publications that describe the work/place, bibliography, etc.

Please refer to section 4.4 above. There are many books that describe the history of Government Hill:

City of Victoria, first published by the Urban Council of Hong Kong, September 1994

The Government Hill Concern Group has compiled a *Government Hill Compendium* in June 2011 with a detailed coverage on various aspects of history, architecture and landscape of the site. See

The Concern Group has also published an information booklet titled “Our Government Hill” in early June 2012. This can be accessed at www.governmenthill.org

4.7 Time constraints for Advocacy (immediate action/delayed action)

It is recommended that immediate advocacy action be taken by the ICOMOS ISC20C because:

- The Hong Kong Government Antiquities Advisory Board is currently assessing the cultural significance of the CGO complex. Being listed under the Antiquities and Monuments Ordinance does not however prevent a building from being demolished. Even a Grade 1 historic building (highest grade) can be pulled down, only a monument status can save a building from demolition. The ordinance is narrowly defined to look at historic buildings only and does not pay much attention to the historic urban landscape. Advocacy action would add significant international weight against the proposed demolition of the West Wing of the CGO. While the Government Hill Concern Group has recommended the Antiquities Advisory Board to accord the CGO a Grade 1 listing pending monument status, the Government has stated that it will continue to demolish the West Wing as the grading exercise is not in its original plan. The Antiquities Advisory Board will meet on 14 June 2012 to discuss the grading - a heritage alert issued before the meeting could help focus attention on the heritage significance of the site against political pressure exerted by the Government.
- The Hong Kong Government Development Bureau proposes to put the West Wing of the CGO up for sale in 2013 for demolition and redevelopment. Immediate advocacy is necessary before the preparations by the Development Bureau of the sale progresses beyond a ‘point of no return’.

5.0 Recommended Action

5.1 Heritage Alert: international/national distribution

It is recommended that the Heritage Alert have international distribution.

5.2 Letters to:

It is recommended that the letter be addressed to the Hong Kong SAR Chief Executive (the current term will end on 30 June 2012):

Mr Donald Tsang Yam-kuen
The Chief Executive
Hong Kong SAR Government
Office of the Chief Executive
Central Government Offices
Tamar, Hong Kong

Tel: (+852) 2878 3300
Fax: (+852) 25090580
Email: ceo@ceo.gov.hk

Copies of the letter should be sent to the following officials at the same time:

Mr Leung Chun Ying
Chief Executive-Elect
Hong Kong SAR Government
The West Wing, (Former) Central Government Offices
Lower Albert Road
Hong Kong

Email: ceeo@ce-elect-office.hk

Mrs Carrie Lam Cheng Yuet-ngor
Secretary for Development
18/F, West Wing
Central Government Offices
2 Tim Mei Avenue
Tamar
Hong Kong

Telephone: (+852) 3509 8800

Fax: (+852) 2845 3489

Email address: devbeng@devb.gov.hk, carrielam@devb.gov.hk

Mr. Bernard Charnwut Chan
Chairman
Antiquities Advisory Board
136 Nathan Road
Tsim Sha Tsui
Kowloon
Hong Kong

Tel.: (+852) 2208 4400

Fax: (+852) 2721 6216

Email address: amo@lcsd.gov.hk, bernie@bernardchan.com

Mr Ming Kay Chuen, Tom
Executive Secretary
Antiques and Monuments Office
136 Nathan Road
Tsim Sha Tsui
Kowloon
Hong Kong

Email: tkcming@lcsd.gov.hk

Note: Mr Ming should be requested to forward the letter to all members of the Antiques Advisory Board at his earliest convenience.

Mr. Thomas Chow
Chairman
Town Planning Board
15/F, North Point Government Offices
333 Java Road
North Point
Hong Kong

Tel: (+852) 2231 4810 or (+852) 2231 4835
Fax: (+852) 2877 0245 or (+852) 2522 8426
Email address: tpbpd@pland.gov.hk

Kindly copy the letter to the Government Hill Concern Group
Contact person: Katty Law
Contact email: ktylaw@gmail.com

5.3 ISC20C Website upload

It is recommended that an Alert is uploaded onto the ISC20C website.

5.4 Affiliated distribution eg. UIA/Docomomo/TICCIH

It is recommended that distribution be made to affiliated organisations such as Docomomo.

Appendix 1

Extracts from Public Submissions and Professionals

What the Professionals Say

“The West Wing appears modest but actually reflects the high level of design in terms of the site, programme, structure, and composition – suggesting it might be the best among the three wings of the Central Government Offices.”

Vito Bertin, Gu Daqing and Woo Pui-leng in *The Greatest Form has No Shape – Three Exemplary Works of Hong Kong Architecture*

Extracts from Public Consultation on Proposals by Development Bureau on the Central Government Offices: (see: www.pland.gov.hk/pland_en/misc/cgo/index_eng.htm)

“In submitting our views on Initiatives for Conserving Central to the Development Bureau in November 2009 we recommended the preservation of the entire Central Government (CGO) complex, including the West Wing. We are rather perplexed by the recent approach taken by the government to change one of the original eight “conservation initiatives” into a “redevelopment proposal.....”

- The Hong Kong Institute of Architects

“The Government’s present proposal is fundamentally flawed. The starting point should be public enjoyment of Government Hill and what historical, cultural and environmental benefits it can bring to the people and how it could be used to make Hong Kong into a better city.”

- Society for Protection of the Harbour

“.....Simply put: this is a public site that should remain in the hands of the public for public uses and not be sold for inappropriate commercial and retail use.”

- Central & Western Concern Group

“It is not clear why Ice House Street is to be widened at its junction with Queen’s Road Central, as its northern section cannot be equally widened.....We are also concerned that the existing strong green character and tree shading character would be lost.....”

- The Hong Kong Institute of Planners

“.....HKIUD aligns with the (government commissioned) Consultant’s recommendation to create a “Special Protected Area” encompassing several significant historical buildings and the green

space....”

- Hong Kong Institute of Urban Design

Appendix 2

What Michael Wright, chief architect of the Central Government Offices, said about the West Wing and the proposed redevelopment (extracts from an interview conducted in December 2011)

“I think the West Wing was a very important part of the central government complex. There were the three buildings that were linked up, and especially the lift access to the seventh floor making it easier for the public to get to the Secretariat Building (Central Wing). ”

“They were all designed as a whole. It would be a great pity to knock one of them down, for historical reasons they should be retained as a government office complex designed in the 1950s to meet a particular purpose.”

“Do they really need another small artificial park (as proposed in the redevelopment) ? It’s quite unnecessary and will be detrimental to the appearance of Hong Kong.”

“I think it’s quite illogical to trade off a piddling little park - if you would excuse my language - with a ugly 30 storey building, have no park and have a decent building that fits in with the environment.”

“This would have my full support of what you are trying to do to retain the West Wing, not that it’s a marvellous architecture but I think it’s a good solid design, and it’s part of the historical complex built in the 1950s and it should all be retained as one.”

Appendix 3

Statement about the architect of the West Wing of the Central Government Offices written by his daughter, Gillian Aitken.

John Aitken, a post-war graduate of Edinburgh University, joined the HK Architectural Office in 1955 at a time of unprecedented development in Hong Kong. He spent most of his working career in service to the HK Public Works Department, rising to Director of Building Development several years before retirement in 1982.

His first major architectural project soon after arriving in HK was the Central Government Offices complex, known as the West Wing. While my father did not much discuss his working life, he did talk of the West Wing project; the scope, scale and complexity, was not only a significant one for the time, but a significant undertaking for a new recruit, and he felt the weight of his responsibility. Years later, after a lifetime of executing HK housing and infrastructure development programmes on a scale unknown to many in his field, it was the West Wing project he would often recall. The daunting complexity of the site development, the difficulties in how to best retain the site's intrinsic character, including the central banyan tree, and his own personal gratification of successfully integrating a highly modern and visible building into a valued historic precinct. He would have been fascinated to learn of the keen interest in HK today to retain the West Wing, the ironies would not have escaped him.

After retirement, John Aitken was able to fully indulge his love of architectural history, film and travel, eventually settling in Sydney, Australia until his death in 2009.

Appendix 4

Concern for Hong Kong's Built Environment

by Ron Phillips

I was a practicing architect in Hong Kong during the 1950s and 1960s, the period which saw the beginning of the incredible development of one of the most dynamic places in the world.

This was at a time when The Peak back drop viewed from the harbour was largely green, but even in those early days and in anticipation of what was to come, it was recognised that environmentally there was a need to safeguard the amenity of free movement of pedestrians and the principle of high-level walkways was established.

As the co-architect for the City Hall I returned to Hong Kong for both its 30th and 40th anniversaries in 1992 and 2002 and during the former visit I was delighted to feel that whilst amazing changes had taken place there was still some element of the human scale, and urban spaces were being respected if not expanded.

My latter visit was less reassuring. As an example, the then Star Ferry concourse and car park, which was designed as part of an overall City Hall urban space embracing the Memorial Garden, the Sea Front, Cenotaph, and Statue Square had descended into a down-at-heel image. For one thing to see the clean lines of the car park building defaced with such poor commercial advertising, which bordered on graffiti, it was a great disappointment to me. I knew that it was inevitable that the Star Ferry Piers would eventually be relocated, but to see that environment which had been thought about so carefully to be so abused I found distressing and lacking in respect for its users.

I am shortly to return to Hong Kong for the City Hall's 50th anniversary and from what I hear I may experience other disappointments, but being an optimist I hope for the best.

It is a known fact that the only constant in life is change and one cannot stand still, however, there is a danger of it being used as an excuse to sweep aside things of environmental value purely for economic reasons. For reasons of continuity one cannot ignore history and there must be serious regard for what is likely to be sacrificed and by so doing to ask what does it contribute to the community and the environment.

I understand that for infrastructure and reclamation reasons the public open space in front of the City Hall has regrettably been sacrificed together with the Queen's Pier. Such loss of public access and amenity in Central, where it has always been in short supply, can be ill-afforded and the means of escaping the hurly burly of the city centre has now been lost for all time.

I have heard that the West Wing of the Central Government Offices is to be demolished to make way for another office/shopping development and this gives me some concern.

I well remember this wing of the Central Government Offices being built and how the design by my good friend, John Aitken, had been developed to respect and enhance the urban space connecting Cathedral Close, Battery Path, the French Mission Building and the West Wing of the Central Government Offices. I hate to think what the environmental impact the building of yet another glass tower block in this location will have upon this otherwise combined intimate pleasant space of human scale.

All the projects in Hong Kong in which I was involved endeavoured to create human space around them, however small. I give my full support to the Government Hill Concern Group in its efforts to protect and improve the built environment in Hong Kong.

Ron Phillips is the architect of the Hong Kong City Hall and the Edinburgh Place complex, Murray Building and Beaconsfield House (demolished). The City Hall is a grade 1 historic building.

Appendix 5

Use of Local Granite in the Construction of the Central Government Offices Complex

The Central Government Offices (CGO) complex on Government Hill is one of the few samples of 1950s reinforced concrete and granite-faced public buildings in Hong Kong. Michael Wright, the chief architect of the CGO, in an interview with the Government Hill Concern Group in December 2011, emphasized that the government had put in “a lot of thought, a lot of care” into finding the right granite for building the CGO complex.¹ This paper will provide information regarding the use of local granite in the construction of the CGO complex. The references are based on archival research of public records of that period, supplemented by information from an academic publication.

Finding the right granite

The Public Records Office has a detailed file on the construction of the CGO (HKRS 156-1-1803). There are several correspondences on granite testing.

Professor S.G. Davis of the Department of Geography and Geology, University of Hong Kong, was commissioned by the Public Works Department (PWD) in 1952 and 1954 to conduct testing of granite facing slabs for use in facing the CGO complex.

In a letter written by Davis to the PWD in June 1952², Davis said *“I presume your main concern in the testing of these granites is that they shall be durable and not rust in the same way as the granites which face the Hongkong & Shanghai Bank Building and the Bank of China.”* He added that a minimum of three weeks spot-testing in the lab was required and he had to do his own sampling from the quarry as *“granite textures and structures are often highly variable over a small area.”* This series of testing was supposedly to obtain the granite for building the East Wing, Stage I of the CGO construction.

In September 1954, Davis was again asked by the PWD to conduct testing of granite samples, presumably for surfacing the Stage II and III of the CGO (Central Wing and West Wing). In a letter written by Michael Wright to Davis³, it was said that *“The necessity for additional tests arises from the fact that the Grampian Road quarry area is to be levelled early next year as part of the new airport extension scheme and, in the circumstances, it is not feasible to cut from this quarry the facing slabs required for the second and third blocks of the Government Offices. It is, therefore, necessary to find another quarry producing granite which is practically identical to that of Grampian Road quarry.”*

Michael went on to say that *“the Hakka mason employed on the Government Offices has produced samples from a quarry at Diamond Hill (near Kai Tak) which are almost identical in appearance and texture to the granite at Grampian Road. It is hoped, therefore, that you (Davis) will select and test samples from this quarry.”*

There was “a complication” which “arises from the fact that the Diamond Hill quarry is already being worked by a private firm under Government permit. It would simplify matters, therefore, if a reasonably accessible but unworked area could be located, producing a similar stone to that at Grampian Road.”

Davis, in his reply letter⁴, said he needed to undertake several procedures: *“(a) Sampling of likely granite areas by my staff and myself. (b) Laboratory micro-testing and sectioning for a minimum period of one month. (c) Weekly visits to the quarry and the stone-masons' workshops with permission to reject faulty dressed stones. The above technique is necessary to ensure masonry that will not rust.”*

It is evident that the government had made much effort in finding the right granite for building the CGO complex. The emphasis is on the quality, rather than the use of expensive materials. In a government memo titled “Building Costs” dated 15 July 1959⁵, from the Director of Public Works to the Colonial Secretary, it was reported that the CGO buildings had a much lower cost than private buildings of the same period (cost per square foot is 62% of Jardine House, 53% of Wing On Life Building, etc), and one of the reasons given was *“the 'expensive' appearance of the government buildings is obtained by careful detailing and insistence on a high standard of finish rather than by the use of expensive materials.”* This reflects the government's taste and philosophy at that time and the attempt to win the hearts of the people through the means of good architecture. *“If the Hong Kong Government is to command respect of the local population, its departments must be worthily housed.”* (from a government correspondence dated 11 July 1949)

Hong Kong Granite

Professor Davis published a book titled ***Building Stones and Rock Materials Used in Hong Kong*** in 1965⁶. There was a section on Hong Kong granite and some references on how it was applied in the construction of the CGO.

“Granite is by far the most popular of all building stones and quarries in it are widely scattered wherever there are suitable and conveniently placed outcrops. In recent years (1960s), because of the tremendous demands of the building industry, it has become obvious that although there is an abundance of granite there is only a limited amount that is suitable as a high quality building stone. Such requirements as strength, texture, durability, mineral stability, colour, accessibility and ease of cutting do not always occur together.” (p.2)

“Hong Kong granite is the best known of all the Hong Kong building stones. When fresh it has a fine appearance, is tough and hard and can take bearing loads of hundreds of tons. Its strength and rough fracture also make it highly regarded for use in concrete aggregates.” (p.2)

“Granite has been used widely in a great number of large buildings in Hong Kong. Prominent among the pre-World War Two buildings are the Supreme Court, the Hong Kong Club and the Hong Kong and Shanghai Bank Head Office. Post-war buildings in granite are best represented by the Bank of China, Chartered Bank, the American Consulate and the large complex of the Administrative Offices of the Hong Kong Government. This last group of buildings is handsomely characterized by plain high walls of white granite that glisten in the early morning or late afternoon sun. The stone for all these post-war buildings was quarried in Grampian Road and Diamond Hill in Kowloon. At the time of writing dressed granite from Diamond Hill to the value of more than two million dollars is being prepared for the new Bank of Canton being built on the Ice House Street. Until June 1964 the Government quarry at Diamond Hill was reserved solely for building stone.” (p.4-5)

Local craftsmanship

Davis' book also discussed the quality of stone masonry in Hong Kong.

"Stone masonry in Hong Kong is a traditional industry that is well established. It is run and controlled almost entirely by the Hakka people who make up the vast majority of the stonemasons. These stonemasons have a reputation for high-class work that compares favourably with the best in the world." (p.37)

"Great care should be exercised to ensure that the cement mortar used in high class granite ashlar should be free from impurities that are likely to cause staining or rusting in the joints. Instead of using sand it is a wise precaution to use granite fines ground from the same rock as the stonework. The excellence of this technique is beautifully shown on the high granite wall at the east end of the Colonial Secretariat on Garden Road opposite the Peak Tramway Station." (p.38)

It is clear from the above review that the CGO complex is a fine example of post-war reinforced concrete and granite-faced buildings in Hong Kong. The use of local granite was carefully planned by the Public Works Department with professional support from the university to obtain high-quality materials, and the result was enhanced by the superior craftsmanship of the Hakka stonemasons.

The sources of these granites which built the CGO complex had long been exhausted. The two quarries in Grampian Road and Diamond Hill ceased operation in the 1950s and 1970s.

The CGO complex is therefore an architectural reminder of the time when grand Hong Kong buildings were built of local granite. Many of the buildings mentioned above had long gone – the old Hong Kong Bank and the old Chartered Bank (two of the big three granite banks), the old Hong Kong Club, etc. The CGO complex - its East, Central and West Wings - which served the public for more than half a century have now become our heritage. It is one of the few surviving examples of 1950s reinforced concrete and granite-faced public buildings in Hong Kong. In its essence, the use of local materials has created a wonderful connection between the buildings and our land. It will be a waste to destroy this architectural heritage.

"I think these Central Government Offices are very fine-looking. They are of what I believe is called functional design and they can certainly be considered a very great credit to our architects and also to the contractors who, in one form or another, erected them and I hope you will agree with me that the Central Government Offices are in every way worthy of the Colony of Hongkong."

- Sir Alexander Grantham, Governor, 1957

Notes

1 The video of the interview of Michael Wright by the Government Hill Concern Group can be viewed on www.governmenthill.org

2 Correspondence re "New Government Offices: Testing of Granite Facing Slabs" from S.G. Davis, Head of Department of Geology and Geography, University of Hong Kong to Chief Architect (J.C. Charter), The Public Works Department, 25 July 1952 (HKRS 156-1-1803)

3 Correspondence re "New Government Offices: Testing of Granite Samples" from A.M.J. Wright, Chief Architect, The Public Works Department to S.G. Davis, 9 September 1954 (HKRS 156-1-1803)

4 Correspondence re "New Government Offices: Testing of Granite Samples" from S.G. Davis to A.M.J. Wright, 1 October 1954 (HKRS 156-1-1803)

5 Government Memo from Director of Public Works to Colonial Secretary, 15 July 1959 (HKRS 156-1-1803)

6 *Building Stones and Rock Materials Used in Hong Kong*, S.G. Davis, First Edition 1965, published by Davis Publications Limited, Hong Kong

Hong Kong's First Underground Carpark

A piece of news from 1959:

An Underground Car Park

An underground car park accommodating about 100 vehicles at Lower Albert Road is now in use.

The first of its kind in Hongkong, the car park is situated underneath the compound between the two wings of the Central Government Offices.

The entrance to the car park is led from Lower Albert Road by a short sloping concrete path and vehicles leave the car park by another opening near Battery Path.

Ventilation of the car park is maintained by a mushroom shaped structure which rises out of the compound near the East Wing.

(South China Morning Post, 11 August 1959 - Public Records Office HKRS 232-1-8)

So the CGO is not only Hong Kong's first air-conditioned public building complex, it also has Hong Kong's first underground car park!

政府山关注组

要求

国际古迹遗址理事会 20 世纪遗产国际科学委员会

就

香港特别行政区政府山中区政府合署西座

发出文物警示的提议

2012 年 6 月

概要

香港政府山拥有 170 年历史，但由于政府计划将其中一大部分重新开发，用于商业用途，政府山正面临受损危险。规划将被拆除和重新开发的部分是**中区政府合署西座**，西座属于 20 世纪文物，建于 20 世纪 50 年代，是当时香港现代主义建筑的典型代表，与东座和中座一起作为香港政府各个部门的办公地点。

政府山的历史与香港的殖民史一样长。英国人在香港登陆后不久，殖民政府就于 1841 年在香港中区划定一片区域，作为其政治、治理和宗教中心，包括总督府、政府各部门和教堂，都相距不远。香港历史学家认为这里很可能是香港最后一片具有文物价值的区域。这里的建筑都不高，而且树木茂盛，香港政府的一份保护咨询报告曾提出应建立一块特别保护区，以更好地保护这一区域。

但在 2011 年新政府总部建成之后，香港政府计划拆除西座，进行新的开发计划。西座地下将进行大规模挖掘，建设大型地下设施，地上则建造高达 32 层的商业写字楼，在高度上将远远超过得以幸存的中座和东座，以及位于这一区域的其它 19 世纪历史建筑，这样在整体上将极大影响政府山的风貌。按照开发计划，虽然这里历史上曾经是香港政府所在地，却将被开发为商业大厦。而且，挖掘工作必将损毁二战期间在政府山下建造的防空地道，这些地道也都属于 20 世纪文物，具有重要的历史价值。

中区政府合署三幢建筑的分布体现了绝佳的空间规划，位置分布合理，而且与礼宾府以及周围环境完美融合。拆除西座，转而建设商业写字楼大厦，就像从一个原本体形完美、健康无缺的身体上切下一只胳膊，转而装上一个过大的假肢，体形自然不再匀称。

我们呼吁国际社会立即采取措施，阻止这一破坏行为，挽救香港这项重要的 20 世纪文物。

1.0 建筑/位置说明

1.1 现名：中区政府合署

原名：同上

1.2 位置：香港香港岛中区

1.3 类别/种类：政府部门/总部（2011 年底以前）

1.4 当前文物保护状态：未受保护

2.0 历史/重要性说明

2.1 重要性说明

中区政府合署位于政府山核心位置，而政府山 170 年来一直是香港政府所在地。由于中区政府合署是香港政府的主要办公场所（直到政府总部在 2011 年底移至维多利亚港附近的添马舰），这里体现了政府管理职能的行使，也见证了事关香港的历次重大政治决定。中区政府合署在政治上非常重要，因为这里曾是很多重要政府部门和政治人物的办公所在，而且这里不但曾是英国殖民政府的总部，香港在 1997 年回归中国后，也是特别行政区政府的总部。

中区政府合署在社会意义上非常重要，因为民众在这里集合、抗议，是香港市民针对政府政策发表意见的重要场所。

中区政府合署在建筑意义上也很重要，因为它是香港 20 世纪 50 年代现代主义功能建筑保存最完好的代表。当时，香港现代主义建筑设计水平可以与世界上最好的建筑作品比肩，其现代主义设计极大影响了当时香港其它建筑的设计。

2.2 位置历史

中国清政府在 19 世纪 40 年代初的第一次鸦片战争中战败后，香港被英国人占据，当时香港还只是中国南部沿海上的一个小渔村。英国人占领香港岛后不久，就将位于香港岛北边、介于雅宝利渠和忌连拿利渠之间的山坡划为政府用地，命名为政府山。中区政府合署的历史必须放置在政府山历史地貌的大环境中来理解。

之后，政府山上建造了若干建筑和设施，包括总督府、一个炮台（美利炮台）、若干政府部门、一间教堂、以及通往政府山的一条小路，都掩映在郁郁葱葱的林木中间。

20 世纪 30 年代，有人提出将政府山整体进行重新开发，但被当时的新任总督否决。政府山在二战和日本占领期间幸存了下来。1940 年到 1941 年，政府山下面挖掘了很多防空地道和洞穴，很多现在都还在。

战后，香港政府出台了重新开发计划，以便能够容纳所有政府部门，为此，拆除了美利炮台附近的老旧办公楼和临时建筑，建造了中区政府合署，1959 年完工。

之后一直到英国统治结束，香港在 1997 年回到中国怀抱，成为特别行政区，中区政府合署

都一直是香港政府总部，因此见证了权力的转移和主权的交接。

20 世纪 90 年代中期，香港市民开始在这里集会、抗议、要求民主和权利。比如，每年的 7 月 1 日游行数年来均以中区政府合署为终点，因此这里已经成为香港市民直接参与政府事务的重要场所。

2011 年底，香港特别行政区政府将总部移至添马舰，并计划出售和重新开发中区政府合署西座。

2.3 项目日期/开工日期/完工日期

早在 1946 年，香港就已经认识到需要在中心地区建造新的政府合署，满足不断扩大的政府办公需求。1946 年提出初步计划，到 1950 年至 1951 年，中区政府合署初步设计完成。虽然三幢建筑作为整体设计而成，但其建造是分期进行的，建造时间分别如下：

- 东座 1952 年开工，1954 年完工。
- 中座 1954 年开工，1956 年完工。
- 西座 1957 年开工，1959 年完工。

2.4 建筑师/设计师

中区政府合署由香港政府工务局建筑处负责设计。首席建筑师为迈克尔·怀特。东座和中座由建筑处建筑师约翰·查特设计，西座则由另一名建筑师约翰·艾特肯设计。

2.5 建筑设计师是否还健在？住址，出生国家，联系方式

迈克尔·怀特仍然健在，已经 99 岁高龄。如果需要，我们可以提供他的联系方式。www.governmenthill.org 网站有对他的视频采访。

他的背景信息如下：

迈克尔·怀特（1912-）

1938 年进入香港政府工作

中区政府合署首席建筑师

设计了天星小轮码头钟塔

曾担任工务司（1963-69）

参与设计建造香港众多公屋项目和基础设施项目，包括香港地铁、香港海底隧道、水库和城镇社区

香港建筑师学会创办人

励德村以他命名

西座的建筑师约翰·艾特肯在两年前去世。他的女儿为他写了一份说明，详情见附件 3。www.governmenthill.org 网站有约翰·艾特肯在 1957 年至 1959 年间拍摄的一段胶片片段，里面显示了西座工地的搭建和建造情况。

约翰·查特已经去世。

2.6 建筑/位置的早期和当前使用情况

中区政府合署的设计用途是政府办公大楼。2011 年底香港政府移至位于维多利亚港附近添马舰的新政府总部之前，中区政府合署一直保持着这一功用。到今天，仍有一些部门在西座办公，而且 2012 年 3 月底以来，候任行政长官梁振英在今年 7 月 1 日搬到添马舰正式上任之前，他的临时办公室就设在西座 12 层。

2.7 改建，扩建

中区政府合署完工投入使用之后，又进行过一些改建和扩建，主要是增加办公面积，或更改布局和设计。主要改建情况如下：

- 西座、中座和东座均加盖一层，以增加办公面积。
- 1975 年在西座立法局议事厅边上建造了一个景观天井。
- 中座扩建工程在 1991 年完工，扩建部分称为新翼，扩建的目的是为了给行政局提供更多办公空间，为此拆除了扇形的立法局议事厅。新翼的设计与中座正面相互辉映。
- 各办公室进行了装修。
- 2001 年合署周边设立了安全隔离墙，公众无法再从炮台里，穿过合署，到下亚厘毕道。
- 西座在下亚厘毕道的入口大堂进行了扩建，以扩大空间。

2.8 当前状况

三座建筑在 2011 年底以前一直都是政府总部所在，当前状况良好，不过除了有限的几间办公室仍在用作政府办公场所，以及候任行政长官梁振英临时占用的办公室外，大多数办公室都是空的。

2.9 最初的设计意图

中区政府合署三栋建筑虽然分期施工，但最初是作为一个整体而设计规划的。最初的设计意图是长期使用，将绝大多数政府部门集中到这个地方，改善政府员工的福利和工作条件，并因此设计建造了餐厅、休息室和牙科诊所，并且所有房间都安装了空调，这在香港历史上是第一次，以前从来没有政府大楼做到这一步。

中区政府合署三栋建筑呈东西方向布局，与礼宾府中轴线平行，而且为了确保礼宾府向北拥有良好的视野，三栋建筑都不是很高，这样，从礼宾府眺望，就可以看到政府合署（在最前面）、中区的各个商业大厦、维多利亚港、九龙以及新界的山脉。

另外，合署三栋建筑的设计与政府山的地形充分契合，尤其是西座，由于矗立在山坡上，一部分坐落在下亚厘毕道的高度，另一部分却坐落在更低的皇后大道中高度上，因此装有电梯，供在合署工作的政府职员和公众可搭乘，以便更快捷地从皇后大道中抵达下亚厘毕道上的中座和西座，以及政府山更高处的地方。

3.0 描述（历史和技术上）

3.1 物理描述

中区政府合署由三栋建筑组成。西座位于西端，呈“L”形，面向雪厂街、皇后大道中和下亚厘毕道，主门位于西侧的皇后大道中/下亚厘毕道，从这里，大楼向上有 13 层，东侧还有一个入口，正对中座，但这里已经是第 7 层的高度，向上还有 6 层。中座和东座相互连接，形成“T”形，面向下亚厘毕道和花园道，与圣约翰座堂（受保护文物）相邻。中座入口在下亚厘毕道，东座入口则在下亚厘毕道与花园道的交汇处。中区政府合署 1959 年完工，拥有香港第一处地下停车场，能够停放 100 辆汽车。具体见附件 6。

3.2 采用的建造结构

中区政府合署采用钢筋混凝土框架结构，正面为混凝土框架，采用平顶，三栋大楼的承重结构均为混凝土框架，重点区域建有框架墙，筏式地基建有端墙。主体办公区域的垂直承重组成为柱网，内廊在中间，鳍片密集，在正面以 2 片或 4 片为一组。在东座和西座的一层公共区域以及餐厅，正面的结构承重主要依靠柱网。

三幢建筑规划的柱网单元均为 9 英尺见方，办公室尺寸可灵活分割，如果以这一数字的一半（即 4.5）作为一个模块单元，则主体结构内廊的柱网尺寸为 2×4，办公室柱网尺寸为 4×4，西座每侧柱网尺寸则为 4×5。东座和中座建筑正面垂直鳍片间距为 1，西座为 2。东座和西座主体办公区域由 4 个结构部分组成，每个结构部分长度为 16 个模块单元。

大楼外侧横竖相间，形成各样网格，起到部分遮阴效果，东座有一种设计，中座一种，西座则有两种。最初，网格采用水刷石饰面，填充物则根据位置，选择水刷石或瓷砖。这种设计与铺设花岗岩的墙面对比明显，形成统一风格，而网格起到了丰富视觉的作用。

中座首层采用了石板，作为基础。以上各层与矮墙等高的鳍片安置在玻璃中间，空隙采用绿色瓷砖填补。这些都与东座和西座不同，因此使得中座具有了明显特色，也彰显了其重要性。香港市民几乎每天都会在电视新闻中看到中座大楼的正面画面，中座因此已经成为香港政府的面孔。

3.3 环境/周边

中区政府合署位于香港中区，这里是香港的历史中心，很多重要的民政和商业建筑坐落在这里。中区大部分地区都密布商业大厦。政府合署坐落在具有非凡历史意义的政府山上，同样建造在政府山上的还有圣约翰座堂（香港圣公会主教座堂）、前法国外方传道会大楼（现为终审法院）和礼宾府，所有这些建筑都建于 19 世纪，具有重要的历史意义，属于受保护文物。炮台里穿过皇后大道中和雪厂街交界之处，并经过前法国外方传道会大楼和政府合署。

在香港中区，政府山是非常难得的一片区域，高楼大厦不像别处那样密集，风景很好，尤其是炮台里附近，风景更佳。政府山在不同的方向和区域，坡度差别很大，炮台里附近坡度很大，而圣约翰座堂附近则相对平缓。

在政府合署南面，坐落在下亚厘毕道和上亚厘毕道之间的就是礼宾府（1855 年建成），这里有很多高大的树木，如同置身于一个大花园。香港在 1997 年回归祖国怀抱之前，礼宾府一直是港督的官邸，现在，这里是香港特别行政区行政长官的住所。礼宾府以南，上亚厘毕道

之上，是 19 世纪 60 年代就已经建立、超过 5 公顷大的香港动植物公园。与中区高楼林立的其它区域相比，政府山、礼宾府和动植物公园景色如此优美，实属难得。

政府山西侧是中区的各式商业建筑，包括百货商店和写字楼。

北侧是皇后像广场，这里有阿斯顿·韦布设计的原香港最高法院大楼（1912 年建成）、哈里·塞德勒设计的香港俱乐部（1984 年建成）、和平纪念碑、以及罗纳德·菲利普斯和阿尔·菲奇设计的香港大会堂（1962 年落成）。诺曼·福斯特设计的香港汇丰总行大厦（1985 年建成）位于政府山和皇后像广场之间，渣打花园则位于皇后像广场东侧。

政府山东侧是罗纳德·菲利普斯设计的美利大厦（1969 年建成），曾作为政府办公场所。美利大厦两侧分别是圣约翰大厦和花旗银行大厦。美利大厦东侧是香港公园，而香港公园的所在原来是域多利军营，旧三军司令官邸就是域多利军营的一部分。

3.4 社会和文化背景

中区政府合署的建筑意图就是作为香港政府的治理和施政场所，而且政府山从香港的殖民时期开始就是政府施政所在地，见证了香港在 1997 年的主权回归，之后依然作为政府总部，直到 2011 年底，添马舰新政府总部大楼落成。

而且，香港行政会议每周都在这里举行会议。另外，立法局 1985 年迁至原香港最高法院大楼前，立法局也在这里办公，立法局议员在这里商讨事宜，总督在这里做年度报告，每年的政府预算也是在这里宣布。很多与香港市民生活休戚相关的重要决策都是在这里做出的，因此中区政府合署在香港的社会历史中占有非常重要的地位。按照发展局的设计，拆除西座，允许私人开发商开发写字楼，原本一直作为香港政府所在的这块土地（殖民时期和之后）将在一定程度上被商业化。

中区政府合署具有重要的社会意义，因为这里还是香港市民和团体与政府交流的场所，西座作为合署的一部分自然也起到了重要的作用。数年来，中区入口处都是电视新闻媒体的聚集处，他们在这里架起摄像机，采集每日的电视新闻，播报政府的公告和活动。

西座在皇后道中和雪厂街交汇处的入口意义非凡，因为这里是公众进入政府合署的入口。20 世纪 60 年代时，大厅里有一片接待区域，提供香港政府公共咨询服务，就香港市民日常生活中的所有事宜，答疑解惑。从西座雪厂街入口进来，也有政府面向公众的窗口，比如一个交费处和一个公共洗手间。中区政府合署首席设计师迈克尔·怀特提到了西座的一点特别之处：它安装了一部电梯，公众可以使用，从而更加快捷地从皇后道中到达下亚厘毕道，可称得上是一项便民之举——当时还没有设置安全隔离墙。

中区政府合署具有重要的社会意义，还因为这里是香港公众对政府举措和政策表达不满的场所，从个人独自表达对政府行为的不满，到群众游行示威，都曾在这里出现。游行队伍一般走炮台里，到政府山，一直走到中座和西座之间的空地，百年树龄的紫檀树下，作为终点。

3.5 材料/结构/形式/功能

东座、中座和西座三栋建筑采用的材料一样，都是混凝土框架和 Crittall 通用钢质窗框，有

些区域采用了花岗岩，比如入口门厅处，以示区别（例如，西座首层外雪厂街前空地铺设的花岗岩）。根据英国保育建筑师事务所 Purcell Miller Tritton LLP 公司出具的《中区政府合署历史与建筑评价》，西座外墙最初采用了水刷石饰面（其它两座建筑很可能也是如此）而水刷石则是水泥、沙子和花岗岩碎片以 1:3:4 的比例混合而成的材料（119 页）。西座大楼正面最初部分镶嵌了石板，但由于着色问题，后来换成了瓷砖。

合署首席建筑师迈克尔·怀特还特别提到，当时他们找遍了香港每一个角落，费了很大力气，搜寻不着色的花岗岩。香港大学的一位专家测试了几种样品之后，最终选择了钻石山一处石场的石头，并用这种石头铺设了西座面向雪厂街一面的外墙，其它两座建筑可能也采用了这种石头。关于香港本地花岗岩在中区政府合署中的使用，详情见附件 5。

三座建筑的形式很容易辨认，具有明显的现代主义风格，是当时典型的低层现代主义办公楼。三栋建筑的设计完美考虑了政府山的坡度，与周围环境相互融合，而不像临近的商业高楼那样突兀。西座的设计尤其不凡，合署西侧的山坡坡度较大，站在皇后道中，可以看到政府山的起伏轮廓。合署是香港坡地建筑的典范，建筑与周围坡地自然风貌和植被完美契合。按照地形，采用“爬坡”设计，让建筑与坡形契合，这样，各个楼层依山而上，每层面积各不相同。这与香港当今典型的设计做法完全不同，按照现在的做法，首先要把场地填到平缓，还有坡度的地方，则用混凝土固定地面，并建造墩座用于支撑。发展局的西座开发计划就是采用这种做法，这样就要进行大量填充工作，破坏目前的坡度地形。

空中走廊这一设计理念出自勒·柯布西耶，艾莉森·史密森和彼得·史密森在英国进行了实践，香港也有几处这样的设计。工务局 20 世纪 60 年代设计的 6 处已婚警察宿舍都带有空中走廊设计，但只有香港仔的那处保存了下来。房屋委员会上世纪 70 年代中期开发的兴华（Hing Wah）项目和葵盛西邨项目，也有类似设计，但有所变化，两处项目所处山坡的坡度比较陡，走廊与水平面平行，搭乘升降电梯到达空中走廊后，沿走廊即可走到高坡度点的楼层。西座安装的内部电梯可以看作这类设计的先驱。当时这一设计理念已经为国际建筑设计界所知，工务局结合香港实际情况，充分利用这一理念，并在很多项目中发展了这一理念，取得了良好效果，极大影响了之后的公共房屋设计。

英国保育建筑师事务所 Purcell Miller Tritton LLP 公司对香港中区政府合署建筑的很多方面和部分进行了评价，但从建筑设计的基本方面而言，比如场所、项目、施工和形式，并考虑到整体与部分的协调性，其评价报告未能充分展示合署建筑的高水准设计理念和手法。尤其是西座，其设计非常最为复杂。其中一个典型的例子就是西座与地形的契合，从皇后道和雪厂街看，建筑的大小比例各不相同，整座建筑在下亚厘毕道形成一个公园，而且与周围建筑的空间距离非常合理。还有一个典型的例子，就是其承重结构非常特别，因此可以调整办公室大小，在窗户上形成遮荫效果，并且各方向外墙均很有特点。仔细观察，今天依然能够发现很多与众不同的特点，这些特点显然并非出于功能需求之考虑，而是在设计之初，每一处都蕴含着理念。

中区政府合署的建筑高度也经过仔细考究，以免影响到礼宾府的视野（礼宾府就位于政府山南面山坡上）。中座和东座位于礼宾府的一面，西座位于另一面，中间以礼宾府中轴线为界，如果西座被拆除，这种平衡也就被破坏了，再也无法恢复。

中区政府合署建筑之初，就采用了当时香港最为先进的技术，而且为了提供良好的办公环境，

采用的各项设施也是当时一流的，所有房间都安装了空调，还建造了餐厅、休息室和牙科诊所，在此之前，香港从来没有政府大楼做到这一步。

因此可以说，中区政府合署的设计和建造非常成功，虽然入住这里的政府部门需求时有变化，但他们的办公和行政管理功能需求都得到了满足。每栋建筑均采用狭窄楼板，让自然光线充分进入，采用独立承重和非承重结构，允许拆卸各个单元，重组办公空间。

3.6 美学价值

在香港上世纪 50 和 60 年代以来建造的现代主义民事建筑中，中区政府合署是现存仅有的几处之一，因此具有极大美学价值。整个合署的设计体现了整体性，同时，东座、中座和西座三栋建筑在风格方面又有细微差别之处。

东座（最早建成）在下亚厘毕道与花园道交汇处的入口，采用了花岗岩铺面，并进行了细微的艺术装饰。中座完全没有采用任何装饰，西座（最晚建成）则才采用了三者之中最具功能性的设计。因此，可以说，三栋建筑在一定程度上体现了建筑设计部门在设计理念上的细微变化，以及殖民政府高层官员的审美变化。

根据日期为 1951 年 2 月 9 日的一封信件，三栋建筑设计得比较长，比较矮，除了美学方面的考虑之外，还要确保不影响到礼宾府的视野。这也说明，中区政府合署在设计之初，就考虑到要与周围建筑和环境相互协调。

香港建筑师学会在 2010 年 12 月 31 日提交给香港政府的报告中指出：“中区政府合署三幢建筑的分布体现了绝佳的空间规划，位置分布合理，而且与周围的环境完美融合。拆除西座，转而建设商业写字楼大厦，就像从一个原本体形完美、健康无缺的身体上切下一只胳膊，转而装上一个过大的假肢，体形自然不再匀称”。

4.0 警示来由

4.1 参考资料，联系人

本文物警示由香港政府山关注组起草。

网站：www.governmenthill.org

联系人：政府山关注组召集人罗雅宁女士

电话：(+852) 9026 6187

电子邮箱：ktylaw@gmail.com

4.2 支持发布文物警示和/或进行文物保护的团体及联系方式

政府山关注组由 21 个环境和文物保护民间组织以及相关专业人士和民众组成，他们包括：中西区关注组，公共专业联盟，创建香港，环保触觉，绿领行动，长春社，文物保育检查，关注城市规划社区大联盟，社区发展动力培育，拯救海岸，龙虎山环境关注组，香港重建关注组，香港文化遗产基金会，争气行动，绿色健康环境团体，南土瓜湾关注组，保护海港协会，Soho Residents Committee，小检举员，World City Committee，以及龙园慈善基金。

另外，政府山关注组曾在 2011 年初向香港政府提交一份城市规划建议，建议划定中区政府

合署区域为文物，予以保护，建议得到超过 6000 名香港市民和团体成员的来信或者签名支持。

4.3 可能会对文物警示提出反对的组织

香港特别行政区发展局，也正是该局规划出售和重新开发政府山中区政府合署西座。

邮寄地址：香港添马舰添美道二号政府总部西翼 18 楼

电话：(+852) 3509 8800

传真：(+852) 2845 3489

电子邮箱：devbenq@devb.gov.hk

4.4 当地，地区和国际重要性引述

1) 《大象无形——香港现代建筑的三个典范》，展览和书籍，柏庭卫、顾大庆和胡佩玲著，香港中文大学建筑学院（2011 年）。

本书研究和展示了中区政府合署西座的重要意义，样书已邮寄 20 世纪遗产国际科学委员会。

2) 香港特别行政区政府古物古迹办事处曾委托英国保育建筑师事务所 Purcell Miller Tritton LLP 公司进行《中区政府合署历史与建筑评价》工作。该项工作已于 2009 年 9 月完成，具体情况可通过以下网址了解：http://www.amo.gov.hk/en/research_cgo_20091015.php

这份对中区政府合署历史与建筑意义的评价非常详细：认可了中区政府合署的重要意义，建议设立特别保护区，保护政府山文化地貌。然而，香港政府却刻意歪曲，说西座并不重要，为其出售和再开发计划寻找借口。

3) 联合国教科文组织“大学与遗产”国际论坛于 2011 年 9 月 9 日提出“香港政府山面临危险——急需学术支援”。

4.5 来信支持，报刊文章等

香港很多当地报纸，比如香港英文报纸《南华早报》，都曾在其“读者来信”版刊登过很多读者来信或文章，支持保留西座，这些报刊也发表过文章和社论支持保护西座。香港公众向香港城市规划委员会提交了 6000 份书信和请愿书，要求将中区政府合署区域列为文物，加以保护。很多专业团体也申请保护中区政府合署，他们也获得了很多公众支持。如需要，我们可提供上述书信和文章。专业团体和社区组织提交了很多保护申请书，附件 1 进行了一些摘录。

我们通过邮件，向贵委员会发送了香港建筑师学会要求保护西座的几份申请书。另外，我们还扫描并附上了香港《U 杂志》2012 年 2 月 3 日刊登的专题文章“我们的政府山”，以及《明报周刊》2012 年 3 月 10 日刊登的专题文章“谁偷走了政府山？”。

国际古迹遗址理事会咨询委员会主席约翰·赫德先生最近在香港参加世界遗产保护大会期间（2011 年 12 月 12 日），接受了香港电台一位记者的采访。他提到将政府山作为一个整体加以保护非常重要：

呼吁国际社会帮助保护政府山（2012 年 12 月 12 日）

http://rthk.hk/rthk/news/englishnews/20111212/news_20111212_56_804505.htm

中区政府合署首席建筑师迈克尔·怀特先生接受视频采访时（2011 年 12 月），也表示支持将中区政府合署作为一个整体，加以保护。附件 2 从视频中截取了他的部分陈述。完整视频请见 www.governmenthill.org

罗纳德·菲利普斯先生共同设计了香港大会堂，是与迈克尔·怀特和约翰·艾特肯同时代的建筑师，他专门写了一份说明，支持保护中区政府合署西座，详见附件 4.

4.6 对项目/场所有所描述的出版物，书目

请见上面第 4.4 部分。有很多书籍都提到了政府山的历史，比如：

《维多利亚城（City of Victoria）》，1994 年 9 月由香港市政局首次出版。

政府山关注组 2011 年 6 月编写了《政府山概略》，详细说明了政府山历史、建筑和地貌各个方面。详情见 www.governmenthill.org

我们还在 2012 年 6 月初编写了一份小册子《我们的政府山》，请见 www.governmenthill.org

4.7 提出主张的时间要求（马上提出/稍后提出）

我们建议国际古迹遗址理事会 20 世纪遗产国际科学委员会马上行动，提出主张，因为：

- 香港政府古物咨询委员会正在对中区政府合署的文化价值进行评估。虽然合署建筑列在香港《古物及古迹条例》范围之内，却并不足以保护其中一座建筑不被拆毁。即使是一级历史建筑（最高级），也有可能被拆掉，只有被确定为法定古迹，才能确保不会被拆毁。《古物及古迹条例》只注重历史建筑本身，却不特别关注周边的历史地貌。20 世纪遗产国际科学委员会马上提出保护主张，将会对政府拆除中区政府合署西座的计划施加强大的国际压力。虽然政府山关注组已经建议古物咨询委员会将中区政府合署整体列为一类待确认法定古迹，香港政府以这一变化与其原计划不符为由，决定继续执行拆除西座计划。古物咨询委员会将在 2012 年 6 月 14 日开会讨论，做出评级决定，因此如果 20 世纪遗产国际科学委员会能够在他们开会之前发出文物警示，将能够在很大程度上防止政府施加压力，使得古物咨询委员会能够集中精力评价中区政府合署的文物价值。
- 香港政府发展局计划在 2013 年将西座出售，拆除，进行再开发。20 世纪遗产国际科学委员会马上提出保护主张，也能防止发展局进入到出售的实质阶段，那时，就一切晚矣。

5.0 建议的行动

5.1 文物警示：国际/国内范围内

我们建议文物警示在国际范围内发出。

5.2 文物警示发给何部门：

我们建议发给香港特别行政区行政长官（现行政长官任期截至 2012 年 6 月 30 日）：

香港添马舰
政府总部行政长官办公室
香港特别行政区行政长官
曾荫权先生

电话：(+852) 2878 3300
传真：(+852) 25090580
电子邮箱：ceo@ceo.gov.hk

同时抄送以下官员：

香港下亚厘毕道
（前）中区政府合署西座
香港特别行政区政府候任行政长官
梁振英先生

邮箱：ceeo@ce-elect-office.hk

香港添马舰
添美道二号政府总部西翼 18 楼
香港发展局局长
林郑月娥女士

电话：(+852) 3509 8800
传真：(+852) 2845 3489
邮箱：devbeng@devb.gov.hk, carrielam@devb.gov.hk

香港九龙
尖沙咀弥敦道 136 号
香港古物咨询委员会
主席
陈智思先生

电话：(+852) 2208 4400
传真：(+852) 2721 6216
邮箱：amo@lcsd.gov.hk, bernie@bernardchan.com

香港九龙
尖沙咀弥敦道 136 号
香港古物古迹办事处
执行秘书

明基全先生

邮箱: tkcming@lcsd.gov.hk

注: 说明烦请明基全先生尽快转发香港古物咨询委员会所有成员

香港

北角渣華道 333 号

北角政府合署 15 樓

香港城市规划委员会

主席

周达明先生

电话: (+852) 2231 4810 或(+852) 2231 4835

传真: (+852) 2877 0245 或(+852) 2522 8426

邮箱: tpbpd@pland.gov.hk

另外, 还请抄送一份至政府山关注组

联系人: 罗雅宁女士

邮箱: ktylaw@gmail.com

5.3 上传 20 世纪遗产国际科学委员会网站

我们建议应将警示上传 20 世纪遗产国际科学委员会网站

5.4 发送相关组织, 如国际建筑师联合会/国际现代运动建筑遗址协会/国际工业遗产保护委员会

我们建议发送相关组织, 如国际现代运动建筑遗址协会。

附件 1

公共和专业团体申请书摘录

专家如何说

“西座看起来中规中矩，但就场地、程序、结构和布局而言，设计都属高水准——甚至可以说是中区政府合署三栋建筑中最出色的”。

《大象无形——香港现代建筑的三个典范》，展览和书籍，柏庭卫、顾大庆和胡佩玲著

针对发展局的政府中区政府合署开发计划，公共咨询部门看法摘录：

（见：www.pland.gov.hk/pland/en/misc/cgo/index_eng.htm）

“在 2009 年 11 月向发展局提交针对中区政府合署保护规划的看法时，我们曾建议将包括西座在内的中区政府合署作为一个整体，加以保护。对于政府最近决定放弃起初八个保护规划中的一个，转而进行再开发，我们感到非常不解……”

- 香港建筑师学会

“政府目前的规划从根本上就是有问题的，其出发点原本应该是考虑如何让公众更好地享受政府山，让公众感受到政府山的历史、文化和环境意义，如何利用政府山把香港建设得更好”。

- 保护海港协会

“……很简单：这个地方应该由公众决定，如何为公众带来益处，而不应该出售，用于完全不合时宜的商业和生意用途”。

- 中西区关注组

“无法理解雪厂街与皇后道中交汇处为何要拓宽，北边部分根本无法扩到同样宽度……而且我们担心现在的绿色和树木掩隐的景致将不复存在……”

- 香港规划师学会

“香港城市设计学会同意咨询报告（由政府交办）中提出的看法，建立特别保护区，囊括所有几处重要历史建筑和周围的绿色……”

- 香港城市设计学会

附件 2

中区政府合署首席建筑师迈克尔·怀特 对西座和香港政府再开发计划的看法 (摘录自 2011 年 12 月视频采访)

“我认为西座是中区政府合署建筑群非常重要的组成部分。三座建筑紧密相连，由其是公众通过西座的升降电梯，可以直接到达七层，前往政府总部大楼（中座）”。

“三座建筑是作为一个整体设计的，把其中一座拆除，将是非常可惜的，从历史来看，建造于上世纪 50 年代的这些建筑，显然就应该作为政府合署保留下来”。

“香港真的那么需要再人工建一个小公园吗（政府再开发计划的规划）？完全没有必要，而且对香港的整体美感无益”。

“为了一个没用的小公园，为了一幢丑陋的高达 30 层的大厦——抱歉，我的话不太好听——却要付出这么大代价，要把一栋与周围环境完美契合的建筑拆掉，这完全没有道理”。

“我完全支持你们保护西座的努力，西座不仅是一座极好的建筑，而且其设计完全经得住时间的考验，它是建于上世纪 50 年代中区政府合署建筑群的一部分，而且一直都是”。

附件 3

中区政府合署西座建筑师的女儿吉利恩·艾特肯所写的一份声明

约翰·艾特肯二战后毕业于爱丁堡大学，1955 年进入香港建筑部门，当时正值香港高速发展时期，他的建筑设计生涯大多在香港工务局度过，1982 年退休，退休几年前，晋升为建筑发展处负责人。

他抵达香港后，很快就参与到了一项重大建筑项目中，正是中区政府合署西座。虽然父亲很少谈论自己的职业生涯，但却说到过西座项目，说以西座的范围、规模和复杂性，在当时是首屈一指的项目，对他这样的新手而言，更是感受到了巨大的压力。整个职业生涯，父亲负责了香港多个住宅和基础设施建设项目，但数年之后，他时常想起的只有西座项目。当时，建筑场地的设计规划难以想象的复杂，需要尽可能维持区域的固有特点，保护好那棵珍贵的古树，还要尽量让西座这样非常现代的建筑融入这片珍贵的历史区域。如果知道香港公众直到今天仍在努力保护西座，他肯定非常欣慰，而拆除西座的计划，肯定会让他觉得难以忍受。

退休后，父亲便纵情于建筑历史、电影和旅行，后来定居澳大利亚悉尼，直到 2009 年离世。

附件 4

对香港建筑环境的忧虑

罗纳德·菲利普斯

上世纪 50 和 60 年代，我在香港从事建筑行业，是一名建筑师，当时香港正步入高速发展，其速度之快在世界范围内都少见。

当时，从海港看，山顶往下绿色的范围很大，而且在当时，虽然已经预料到接下来的发展劲头，人们还是认识到，必须要保证行人能够通畅地自由行走，因此形成了建设高水准人行道的原则。

作为香港大会堂的共同设计师，我曾分别在 1992 年和 2002 年两次返港，出席大会堂的 30 周年和 40 周年纪念活动。第一次回到香港时，我很欣慰，因为虽然香港已经发生了惊人的变化，但仍不缺乏人性化的设计和考虑，而且城市空间在扩展的同时，很有节制。

但第二次回到香港时，我有了一丝忧虑。比如，天星小轮码头和停车场，设计之初是作为大会堂总体城市建筑体（包括纪念花园，the Sea Front，和平纪念碑，以及皇后像广场）的一部分而建造的，却已经显得混乱不堪。尤其是停车场布满粗制滥造的商业广告，甚至跟乱涂乱画没有区别，让我非常失望。我知道天星小轮码头迟早要另迁新址，但是看到原本经过精心设计的环境，被糟蹋的不成样子，我还是觉得非常恼怒，也对使用者甚为失望。

很快我将再次回到香港，参加香港大会堂落成 50 周年庆典，根据得到的消息，可能会有更多的事情让我失望，但我还是抱着乐观的态度，希望情况不要太糟吧。

我们都知道人生避免不了变化，谁都不可能一成不变，但我们绝对不能把变化作为借口，为了经济利益，放弃具有环境价值的东西。持续性同样重要，谁都不能无视历史，要放弃任何具有历史意义的东西，都应该经过深思熟虑，而且应该扪心自问，这样的做法是否对社区和环境有益。

我知道出于基础设施建设和填海的考虑，大会堂前面的公众休憩空间和皇后码头都没有了，非常可惜。中环公众休憩的空间本身就非常稀缺，这次失去的空间自然不可能再补回来，以后公众再也无法躲避市中心的喧嚣。

我听说中区政府合署西座将被拆除，开发写字楼和购物中心，这让我更加忧虑。

我还清楚地记得建造西座时的情形，记得我的好朋友约翰·艾特肯如何绞尽脑汁，设计这栋建筑，以便能够与附近的圣约翰座堂、炮台里以及前法国外方传道会大楼形成完美的空间位置，更加契合。这里原本充满人文情怀，空间合理，令人愉悦，我不敢想象建造一座玻璃高楼会对此造成何种恶劣的影响。

香港的建筑项目，只要是我参与的，我们都想着要留出公众空间，即便这个空间有时不得以需要很小。对于政府山关注组致力于保护和改善香港建筑环境的努力，我全力支持。

罗纳德·菲利普斯设计了香港大会堂和爱丁堡广场综合体、美利大厦以及拱北行（已拆除）。大会堂为一级历史建筑。

附件 6

香港第一座地下停车场

1959 年新闻

地下停车场

下亚厘毕道一处地下停车场现已投入使用，能够容纳 100 辆停放。

这是香港第一处地下停车场，位于中区政府合署两栋建筑之间形成的空地地下。

从下亚厘毕道驶过一小段水泥路，稍有坡度，即可驶入停车场，并可从炮台里附近的出口驶出。

停车场的通风系统为蘑菇状结构，在东座附近的空地伸出地面。

（《南华早报》，1959 年 8 月 11 日，香港历史档案馆 编号 HKRS232-1-8）

所以说，中区政府合署不仅是香港第一处全面安装空调的政府大楼，还有香港第一处地下停车场！

附件 5

本地花岗岩在中区政府合署建筑群中的使用

政府山中区政府合署建筑群采用钢筋混凝土结构，外墙采用花岗岩饰面，是香港现存少数几处此类政府建筑之一。中区政府合署首席建筑师迈克尔·怀特 2011 年接受政府山关注组采访时强调说，当时香港政府“费了很大力气，花了很多心思”寻找适合的花岗岩¹。本文将对本地区花岗岩在中区政府合署建筑群的使用略加说明。引用的信息均来自当时的历史档案记录以及学术出版物。

找到合适的花岗岩

香港历史档案馆对中区政府合署的建造存有详细的档案记录（档案编号 HKRS156-1-1803），其中有几份关于花岗岩测试的通信记录。

香港大学地理及地质学系教授 S.G. 戴维斯受工务局委托，在 1952 年和 1954 年负责测试用于中区政府合署建筑群的花岗岩石板。

在 1952 年写给工务局的一封信中²，S.G. 戴维斯说到：“我想你们最主要的考虑应该是通过测试，找到最耐用而且不会生锈的花岗岩，不能像汇丰银行大楼和中国银行大楼用的石板那样生锈”。他还说自己至少需要三个星期，进行实验室测试，而且必须由自己从采石场采集样本，因为“花岗岩的质地和结构变化很大，一小片区域内的石片都有可能各不相同”。这批测试是为了找到用于中区政府合署一期工程东座所需的花岗岩。

1954 年，S.G. 戴维斯再次受工务局委托，测试花岗岩样品，应该是用于中区政府合署二期和三期工程（中座和西座）。在迈克尔·怀特写给 S.G. 戴维斯的一封信³中提到：“由于嘉林边道石场明年将被填平，建设新机场扩建项目，建设政府合署二期和三期工程时，将无法再从这里采石，因此我们必须再次进行测试，找到一块石场，能够采集到与嘉林边道石场花岗岩完全一样的石头”。

迈克尔·怀特接着又说：“政府合署工地的客家石匠提供了一些样品，来自钻石山一处石场（启德附近），外表和质地都和嘉林边道石场的花岗岩几乎没有两样。所以，我们希望你能够去此处石场采集一些样品，测试一下”。

但情况比较复杂，因为“已经有私人公司获得香港政府允许后，正在开采钻石山此处石场，所以关键是能不能找到一块尚未开采的区域，容易进入，而且产出与嘉林边道石场花岗岩一样的石头”。

S.G. 戴维斯在回信⁴中说自己的测试需要多道程序：“（1）我自己或我的同事到可能性大的区域进行采样。（2）实验室微粒测试需要至少一个月时间。（3）每周去一次石场和石材处理车间，舍弃不合要求的。只有这样，才能找到确保不会生锈的石材”。

显然，香港政府花费了很大力气，寻找适用于中区政府合署建筑群的花岗岩。选择的关键是材料质量够不够好，而非价格够不够昂贵。1959 年 7 月 15 日，工务司在向辅政司提交的一份政府备忘录《建筑造价》⁵中提到，中区政府合署建筑群的造价相比同时期私人商业建筑

的造价低很多（每平方英尺造价是怡和大厦的 62%，永乐人寿大厦的 53%），而其中一个原因就是“政府合署建筑外墙看似昂贵，实则是对材料质量精挑细选、严格把关的结果，并非是因为真的采用了昂贵的建筑材料”。这些都反映了当时香港政府的品味和做事方法，愿意建造高标准的建筑，赢得公众信任。“香港政府想要获得公众尊重，自己的办公场所至少应该有品味些。”（摘自 1949 年 7 月 11 日一封政府信件）

香港花岗岩

S.G. 戴维斯教授在自己 1965 年出版的《香港的建筑石材和石料》⁶一书中，专门有一节讲述香港的花岗岩，并提到香港花岗岩在中区政府合署建造过程中的使用。

“到目前为止，花岗岩是最常用的建筑石材，而且花岗岩石场随处可见，毕竟只要位置合适，进出方便，有花岗岩露头，就可以开发成石场。近年来（本世纪 60 年代），建筑业对花岗岩的需求非常巨大，但虽说花岗岩产量充足，能够用于高水准建筑的却不多，毕竟要找到在强度、质地、耐用性、产出稳定性、颜色、开采便利性和易切割性等诸多方面都满足要求的花岗岩，是非常困难的。”（第 2 页）

“香港花岗岩是香港所有建筑石材中最知名的。新开采的花岗岩外表很好看，坚硬，承重能力强，能够承受数百吨的重量，而且其强度出众，碎片经常用作混凝土骨料。”（第 2 页）

“香港很多大型建筑都广泛使用了花岗岩，比较典型的此类建筑包括二战前的最高法院大楼、香港俱乐部和汇丰银行总部大楼，以及二战后的中国银行大厦、渣打银行大厦、美国领事馆和香港政府行政办公建筑群（这片建筑群最典型的特征就是花岗岩建造的高墙，虽则简单，但在晨间和傍晚的阳光中闪闪发光）。这些战后建筑的用石均采自嘉林边道和钻石山。本书写作时，位于雪厂街的新广东省银行大厦正在建造当中，需要价值二百万美元的花岗岩，均来自钻石山。1964 年 6 月以前，政府在钻石山的石场专门供应建筑用石。”（第 4-5 页）

香港的石工技艺

S.G. 戴维斯教授的这本书还探讨了香港的石工技艺水平。

“在香港，石工是一个传统行业，发展得很好，几乎主要由客家人经营和控制，绝大多数石匠都是客家人，他们享有很高的声誉，技艺水准很高，足以与世界最好水平相比。”（第 37 页）

“使用的花岗岩方石质量都很好，这时更要特别注意采用的水泥砂浆不能有杂质，否则可能会导致连接处着色或生锈。与沙子相比，最好采用从同样的花岗岩岩石上研磨下来的碎末。这一技艺的好处在辅政司署（花园道，山顶缆车总站对面）东侧花岗岩高墙上得到了充分体现。”（第 38 页）

从上我们可以看出，中区政府合署建筑群是香港二战后建筑的典型代表，带有典型的钢筋混凝土结构和花岗岩墙面。工务局对花岗岩的使用做出了详细计划，而且为了找到最高水准的石料，还专门从大学获取专业援助，而客家人石匠的精湛技艺更是让结果达到了最好。

建造中区政府合署建筑群时采用的花岗岩石料，现今早已枯竭。位于嘉林边道和钻石山的两

处石场已经分别在上世纪 50 年代和 70 年代关闭。

因此，中区政府合署建筑群已经成为香港建筑大发展时代采用本地花岗岩的见证。上面提到的很多建筑早已不复存在，比如原香港银行大楼和原渣打银行大厦（三座花岗岩银行大楼中的两座），以及原香港俱乐部。现在，已经作为政府所在地为公众服务超过半个世纪的中区政府合署三座建筑（东座，中座和西座）已经成为我们的遗产，是香港上世纪 50 年代钢筋混凝土结构和花岗岩墙面建筑仅存的几个代表之一。毕竟，本地建材的采用把建筑本身与香港这片土地连接了起来。毁掉这样一处建筑遗产是难以饶恕的浪费。

“我觉得中区政府合署这几座建筑看起来非常好，体现了功能设计的原则，我们应该高度赞扬我们的建筑设计师和承包商，是他们想尽办法把大楼建造了起来，我认为中区政府合署建筑在所有方面都达到了香港这片土地的标准，希望你们也是这样的看法。”

- 香港总督葛量洪爵士，1957 年

¹ 政府山关注组对迈克尔·怀特的采访视频请见 www.governmenthill.org

² “新政府合署：花岗岩饰面板测试”，香港大学地理及地质学系主任 S.G. 戴维斯给工务局首席建筑师的信，1952 年 7 月 25 日（档案编号 HKRS 156-1-1803）。

³ “新政府合署：花岗岩样品测试”，工务局首席建筑师迈克尔·怀特给 S.G. 戴维斯的信，1954 年 9 月 9 日（档案编号 HKRS 156-1-1803）。

⁴ “新政府合署：花岗岩样品测试”，S.G. 戴维斯给迈克尔·怀特的信，1954 年 10 月 1 日（档案编号 HKRS 156-1-1803）。

⁵ 工务司向辅政司提交的政府备忘录，1959 年 7 月 15 日，（档案编号 HKRS 156-1-1803）。

⁶ 《香港的建筑石材和石料》，S.G. 戴维斯著，1965 年首版，香港戴维斯出版公司出版