

Item N132

**Masonry Bridge
Pok Fu Lam Reservoir
Pok Fu Lam Reservoir Road, H.K.**

香港薄扶林水塘道
薄扶林水塘石橋

Built between 1863 and 1871

N132



For identification of location only, not exact boundary

N132



N132



- END -

Item N52

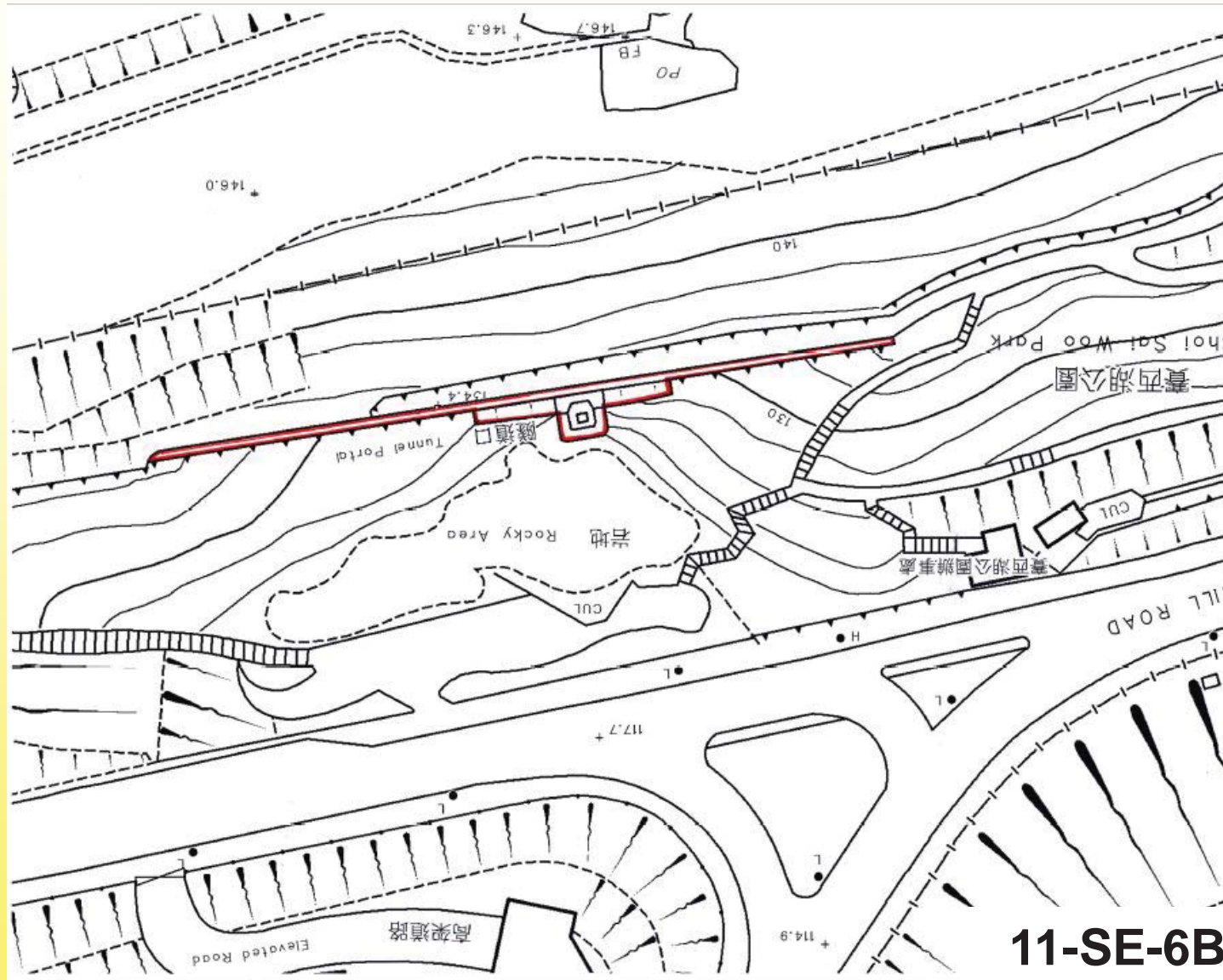
**Tunnel Portal of Water Mains
from No. 5 Dam, Former Braemar Reservoir of
Taikoo Sugar Refinery, Choi Sai Woo Park,
Braemar Hill Road, North Point, H.K.**

香港北角寶馬山道賽西湖公園
舊太古糖廠七姊妹水塘（別稱「賽西湖水塘」）
5號水壩水管隧道口

舊太古糖廠七姊妹水塘5號水壩水管隧道口
Tunnel Portal of Water Mains
from No. 5 Dam, Former Braemar Reservoir of Taikoo Sugar Refinery

N52

Built in 1894



For identification of location only, not exact boundary

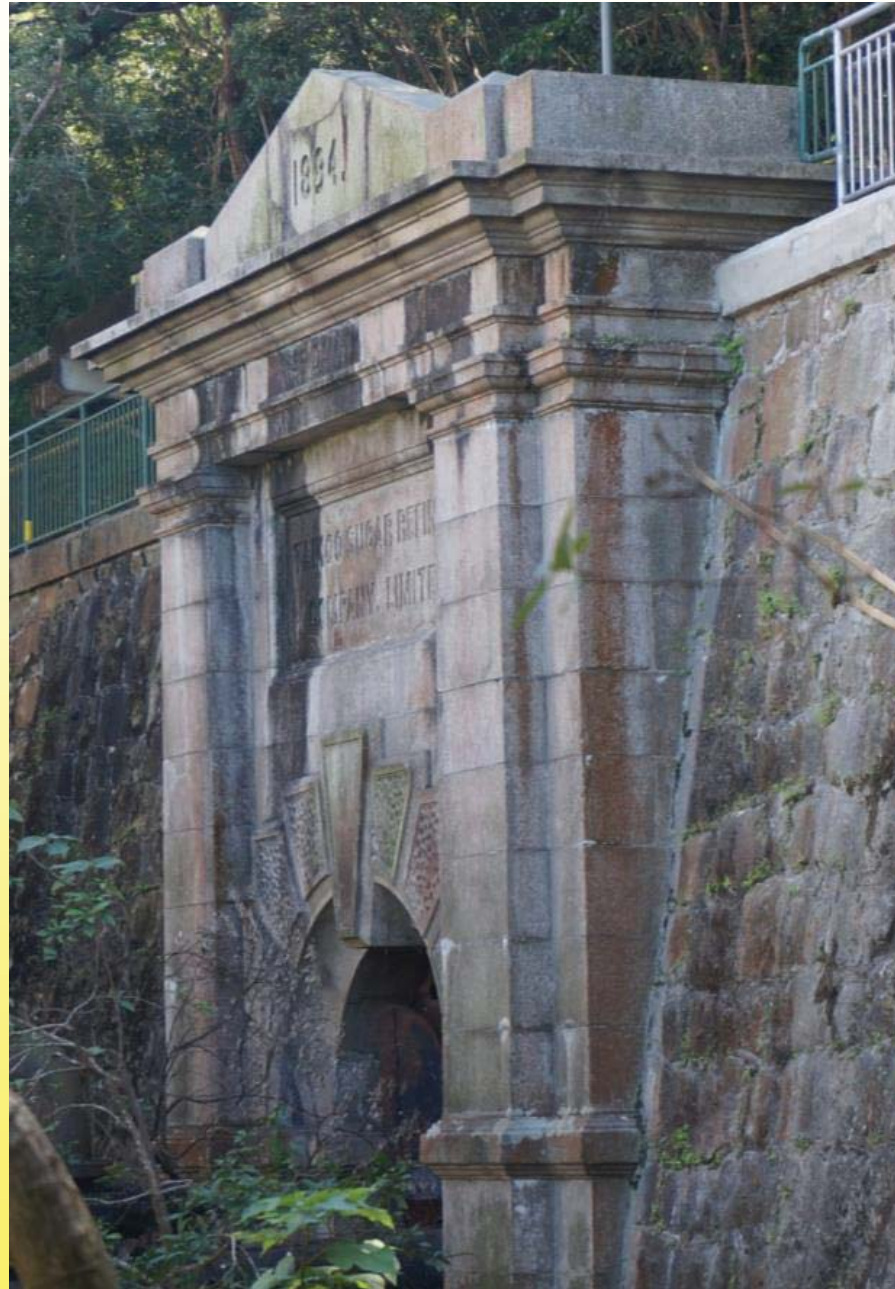
舊太古糖廠七姊妹水塘5號水壩水管隧道口
Tunnel Portal of Water Mains
from No. 5 Dam, Former Braemar Reservoir of Taikoo Sugar Refinery

N52



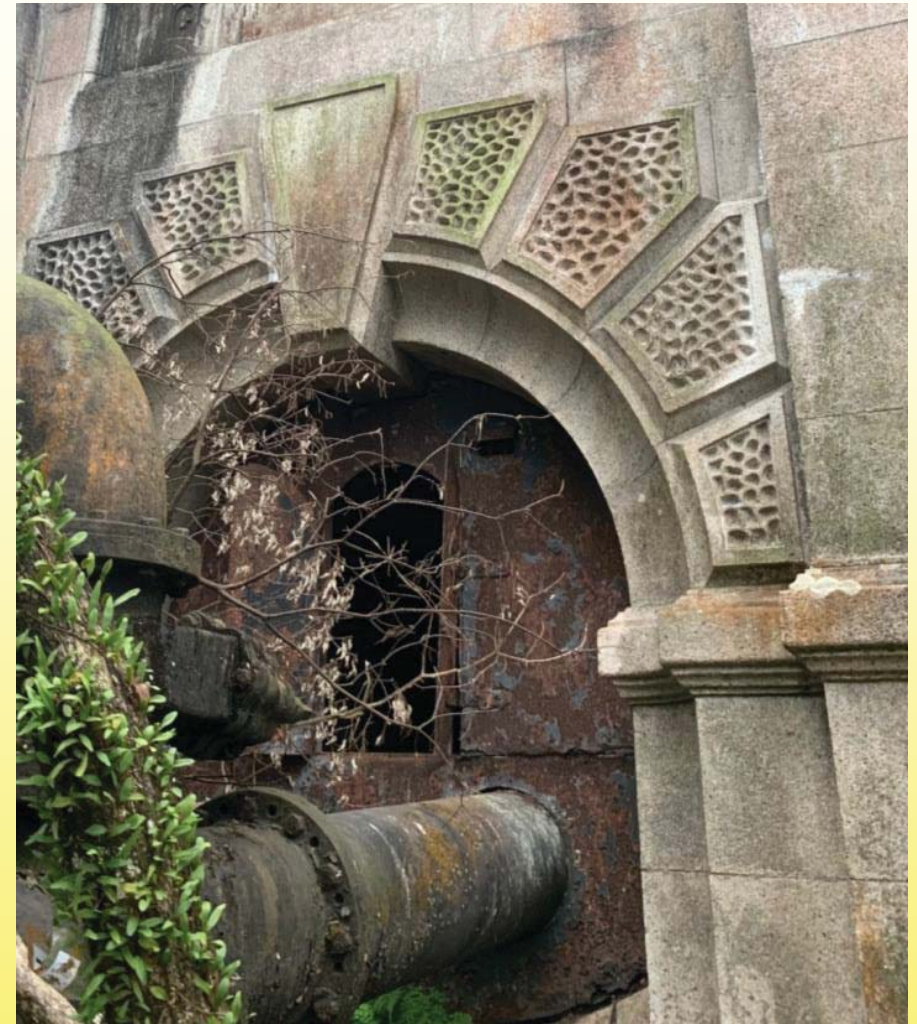
舊太古糖廠七姊妹水塘5號水壩水管隧道口
Tunnel Portal of Water Mains
from No. 5 Dam, Former Braemar Reservoir of Taikoo Sugar Refinery

N52



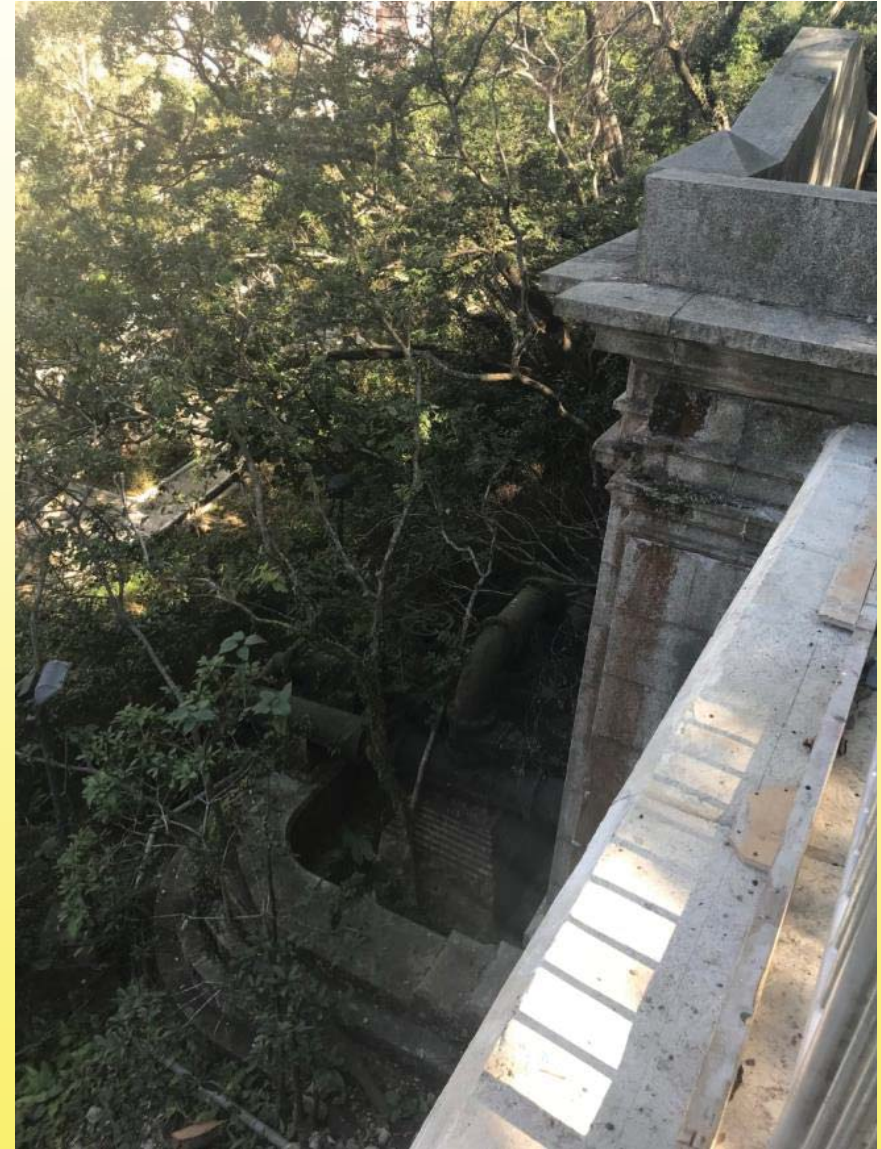
舊太古糖廠七姊妹水塘5號水壩水管隧道口
Tunnel Portal of Water Mains
from No. 5 Dam, Former Braemar Reservoir of Taikoo Sugar Refinery

N52



舊太古糖廠七姊妹水塘5號水壩水管隧道口
Tunnel Portal of Water Mains
from No. 5 Dam, Former Braemar Reservoir of Taikoo Sugar Refinery

N52



- END -

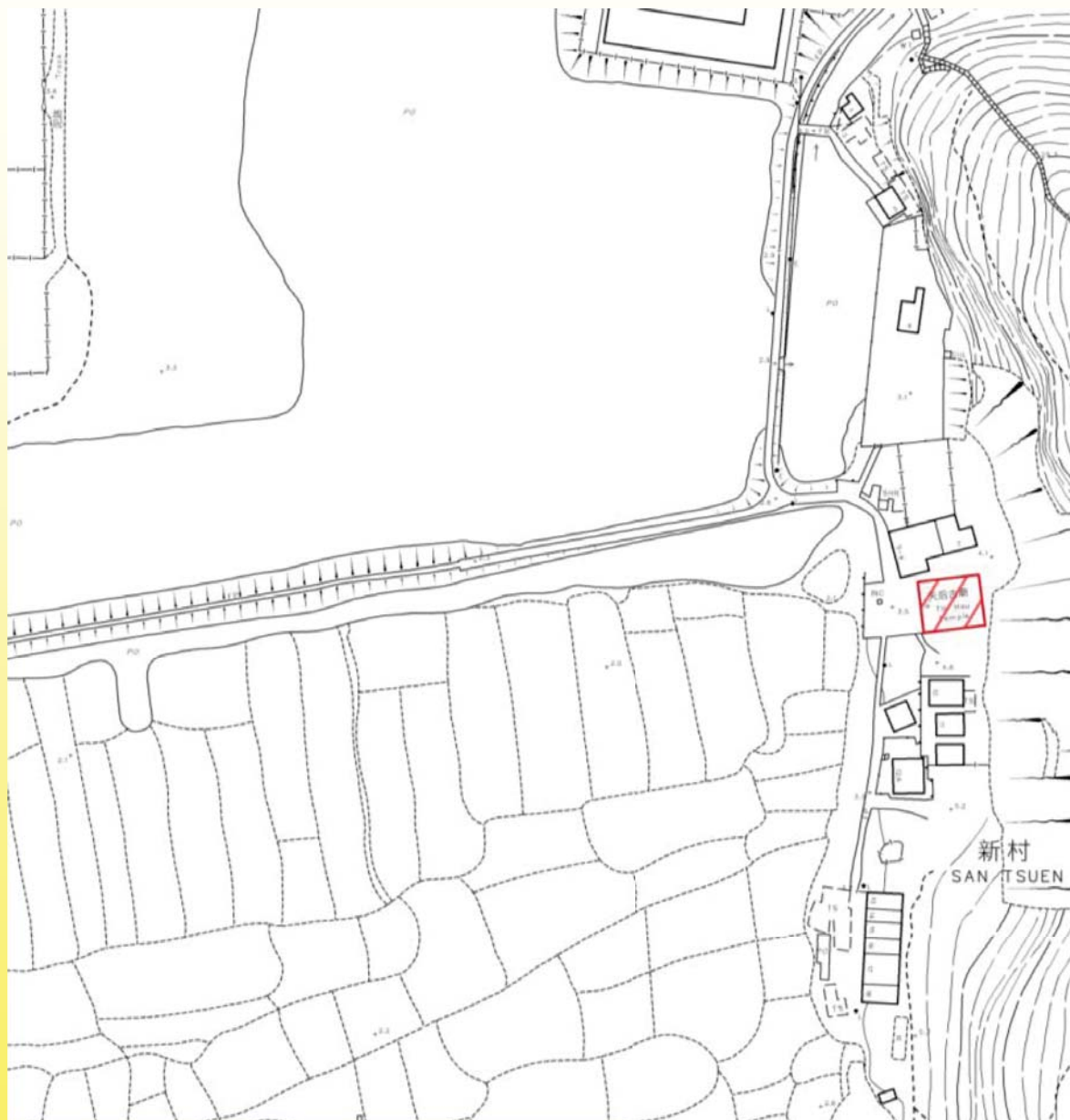
Item N257

**Tin Hau Temple, San Tsuen,
Tai O, Lantau Island, N.T.**

新界大嶼山大澳
新村
天后古廟

新界大嶼山大澳新村天后古廟
Tin Hau Temple, San Tsuen, Tai O, Lantau Island, N.T.

N257



9-SW-23D

For identification of location only, not exact boundary

新界大嶼山大澳新村天后古廟
Tin Hau Temple, San Tsuen, Tai O, Lantau Island, N.T.

N257



新界大嶼山大澳新村天后古廟
Tin Hau Temple, San Tsuen, Tai O, Lantau Island, N.T.

N257



新界大嶼山大澳新村天后古廟
Tin Hau Temple, San Tsuen, Tai O, Lantau Island, N.T.

N257



石灣均玉造

光緒十八年(1892)

新界大嶼山大澳新村天后古廟
Tin Hau Temple, San Tsuen, Tai O, Lantau Island, N.T.

N257



新界大嶼山大澳新村天后古廟
Tin Hau Temple, San Tsuen, Tai O, Lantau Island, N.T.

N257



天后寢室



雍正三年 (1725)



康熙五十二年 (1713)

新界大嶼山大澳新村天后古廟
Tin Hau Temple, San Tsuen, Tai O, Lantau Island, N.T.

N257



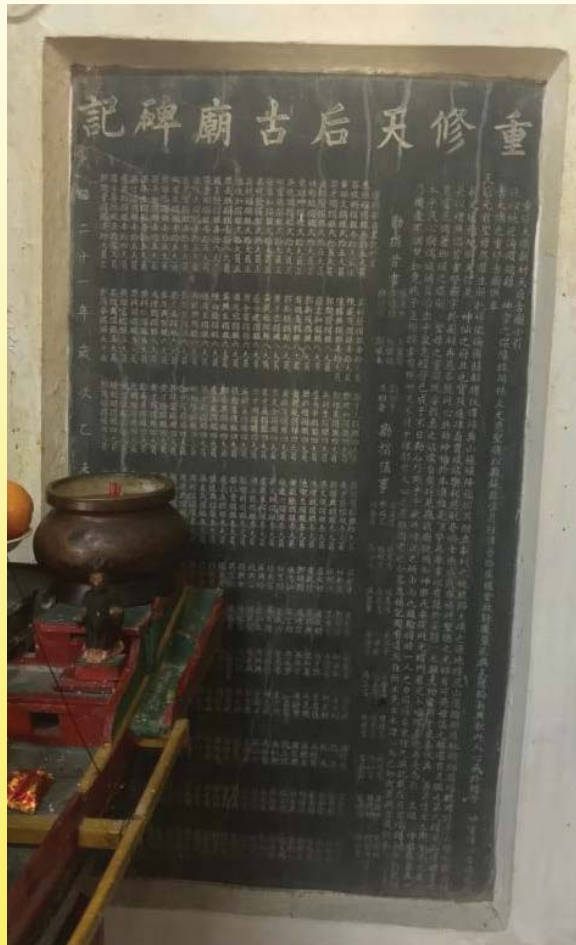
道光十八年 (1838)



光緒十八年 (1892)



民國三十五年 (1946)



光緒二十一年 (1895)



道光十八年 (1838)



Item N251

**Nos. 301 & 303 Castle Peak Road
Sham Shui Po, Kowloon**

九龍深水埗
青山道**301及303號**

九龍深水埗青山道301及303號
Nos. 301 & 303 Castle Peak Road, Sham Shui Po, Kowloon

N251

Built in 1933



For identification of location only, not exact boundary

九龍深水埗青山道301及303號
Nos. 301 & 303 Castle Peak Road, Sham Shui Po, Kowloon

N251



九龍深水埗青山道301及303號
Nos. 301 & 303 Castle Peak Road, Sham Shui Po, Kowloon

N251



九龍深水埗青山道301及303號
Nos. 301 & 303 Castle Peak Road, Sham Shui Po, Kowloon

N251



九龍深水埗青山道301及303號
Nos. 301 & 303 Castle Peak Road, Sham Shui Po, Kowloon

N251



九龍深水埗青山道301及303號
Nos. 301 & 303 Castle Peak Road, Sham Shui Po, Kowloon

N251



九龍深水埗青山道301及303號
Nos. 301 & 303 Castle Peak Road, Sham Shui Po, Kowloon

N251

