

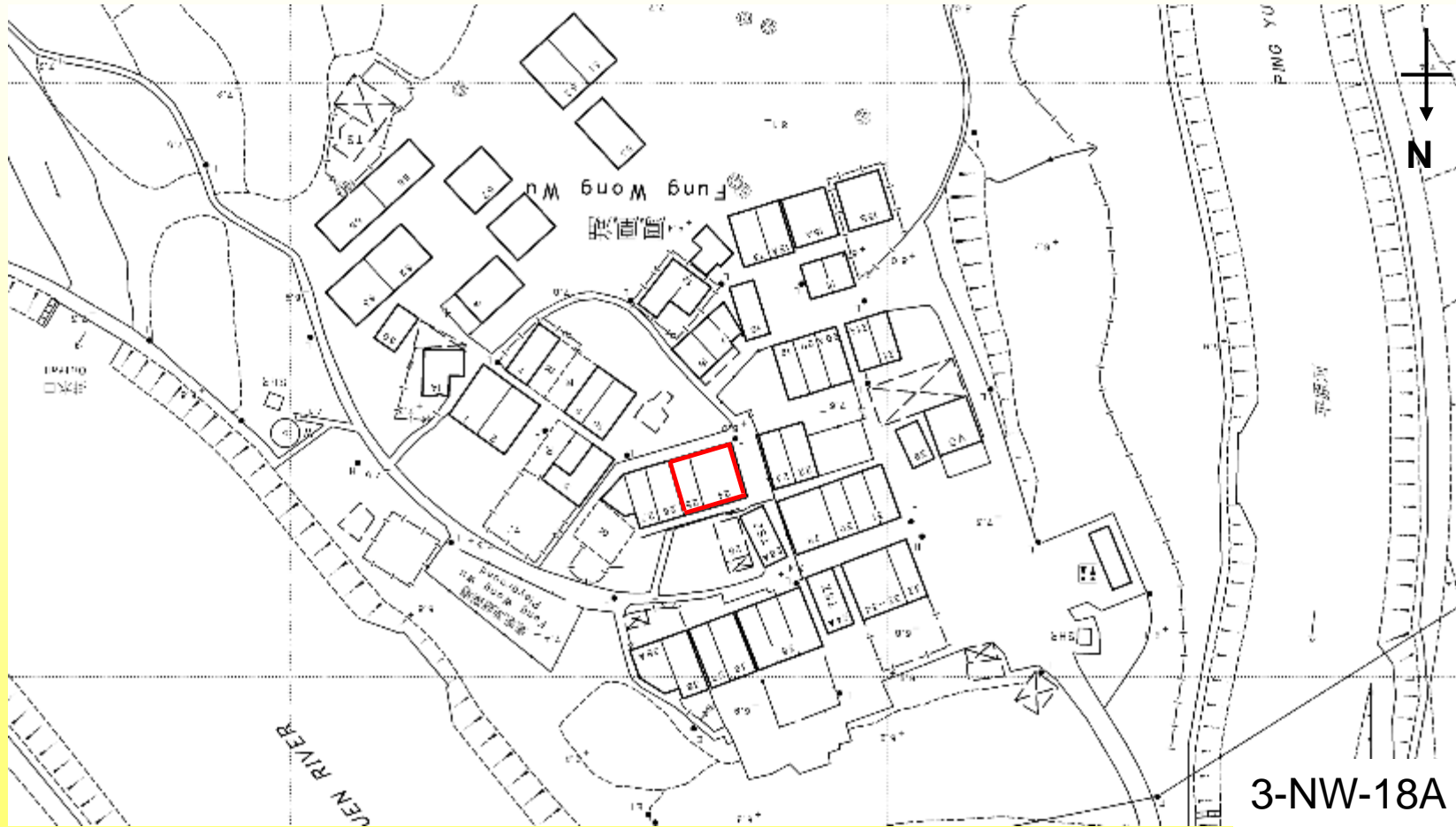
**新界打鼓嶺鳳凰湖
24號至25號村屋**

**Village Houses,
Nos. 24-25 Fung Wong Wu,
Ta Kwu Ling, N.T.**

新界打鼓嶺鳳凰湖24號至25號村屋
Village Houses, Nos. 24-25 Fung Wong Wu, Ta Kwu Ling, N.T.

N92 擬議三級歷史建築 Proposed Grade 3

相信約建於1920年代
Probably built around the 1920s



只用於識別位置，並非確實範圍 For identification of location only, not exact boundary

新界打鼓嶺鳳凰湖24號至25號村屋
Village Houses, Nos. 24-25 Fung Wong Wu, Ta Kwu Ling, N.T.

N92 外部 Exterior 25號

(No. 25)



24號
(No. 24)



新界打鼓嶺鳳凰湖24號至25號村屋
Village Houses, Nos. 24-25 Fung Wong Wu, Ta Kwu Ling, N.T.

N92

24號
(No. 24) 室內 Interior



新界打鼓嶺鳳凰湖24號至25號村屋
Village Houses, Nos. 24-25 Fung Wong Wu, Ta Kwu Ling, N.T.

N92

25號
(No. 25) 室內 Interior



N217

**九龍九龍城賈炳達道99號
李基紀念醫局**

**Lee Kee Memorial Dispensary,
No. 99 Carpenter Road, Kowloon City, KIn**

九龍九龍城賈炳達道99號李基紀念醫局

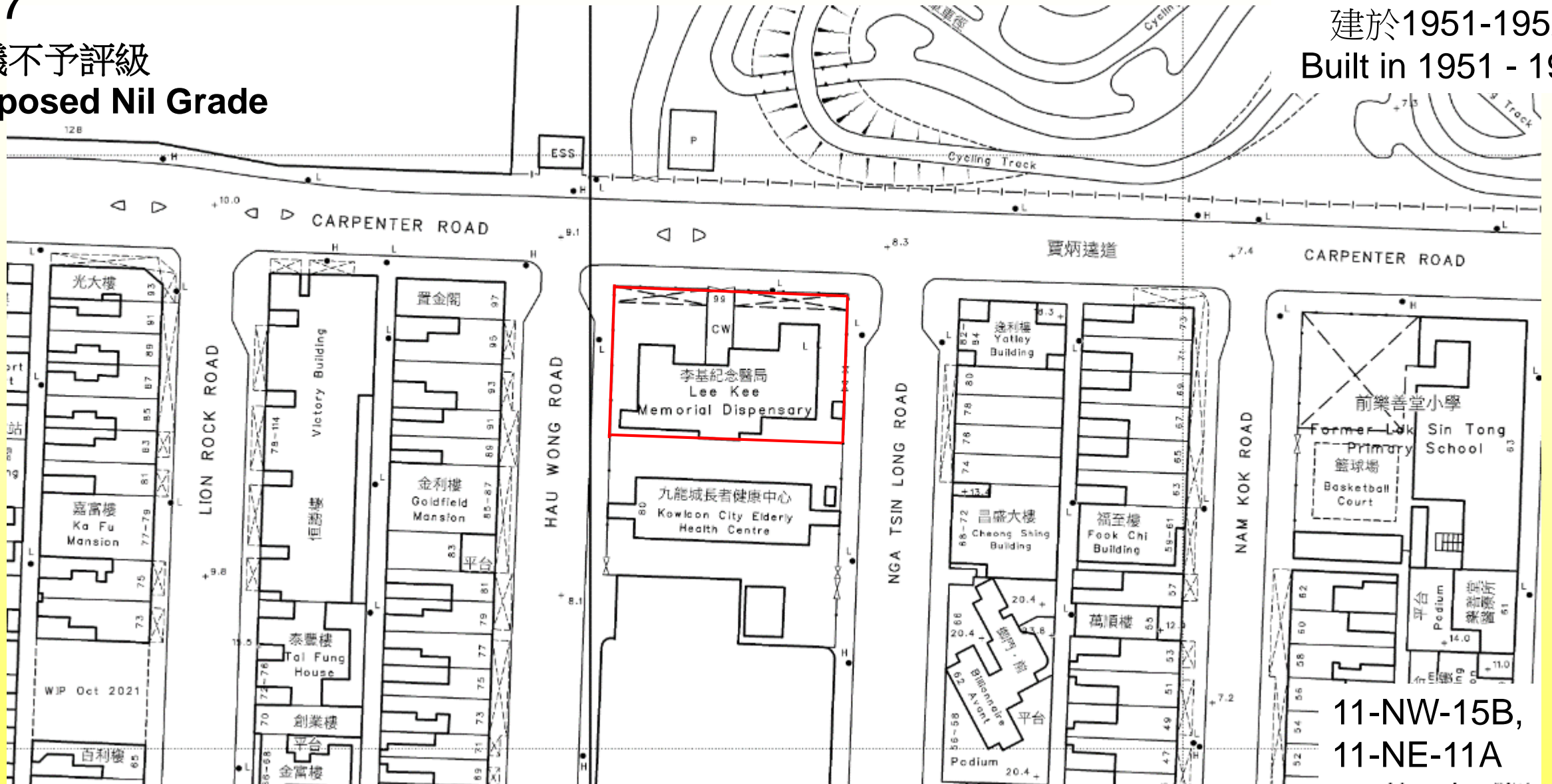
Lee Kee Memorial Dispensary, No. 99 Carpenter Road, Kowloon City, Kln

N217

擬議不予評級

Proposed Nil Grade

建於1951-1952年
Built in 1951 - 1952



11-NW-15B,
11-NE-11A

只用於識別位置，並非確實範圍 For identification of location only, not exact boundary

九龍九龍城賈炳達道99號李基紀念醫局

Lee Kee Memorial Dispensary, No. 99 Carpenter Road, Kowloon City, Kln



賈炳達道 正門
Carpenter Road Main Entrance



背立面
Rear Elevation



衙前墾道 側門 Nga Tsin Long Road Side Entrance



侯王道 側門
Hau Wong Road Side Entrance

九龍九龍城賈炳達道99號李基紀念醫局

Lee Kee Memorial Dispensary, No. 99 Carpenter Road, Kowloon City, Kln

N217



候診大堂 Waiting hall



辦公室 Office



換藥室 Dressing room

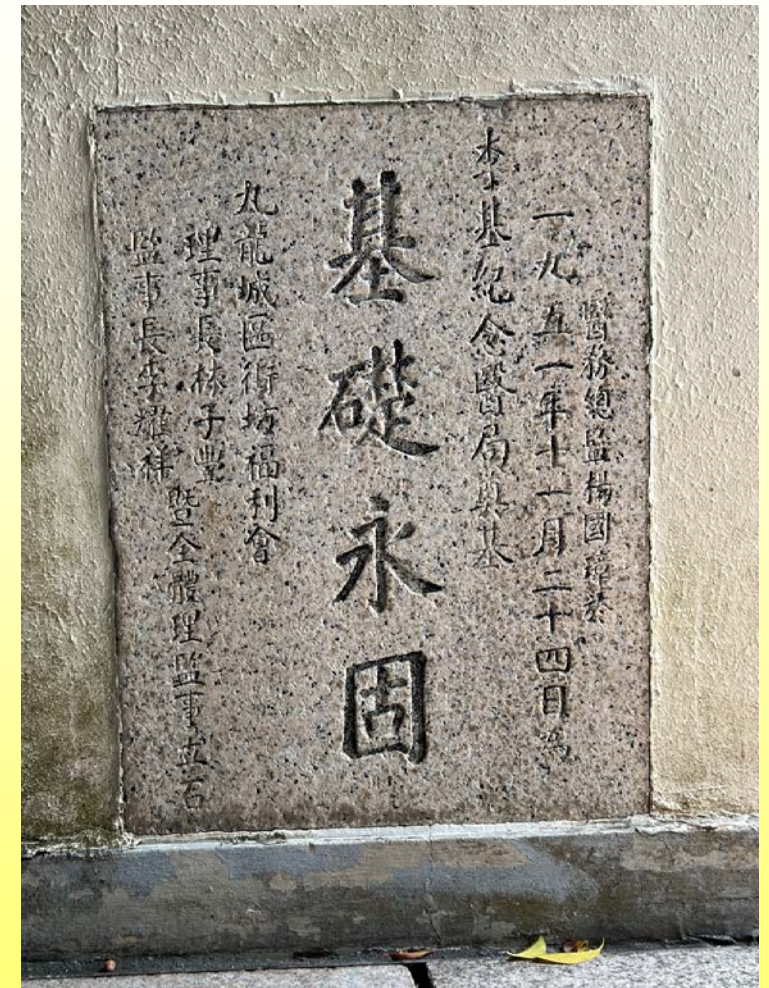


往侯王道出口
Exit to Hau Wong Road

N217



紀念匾額 Memorial plaque



奠基石
Foundation Stone

N389

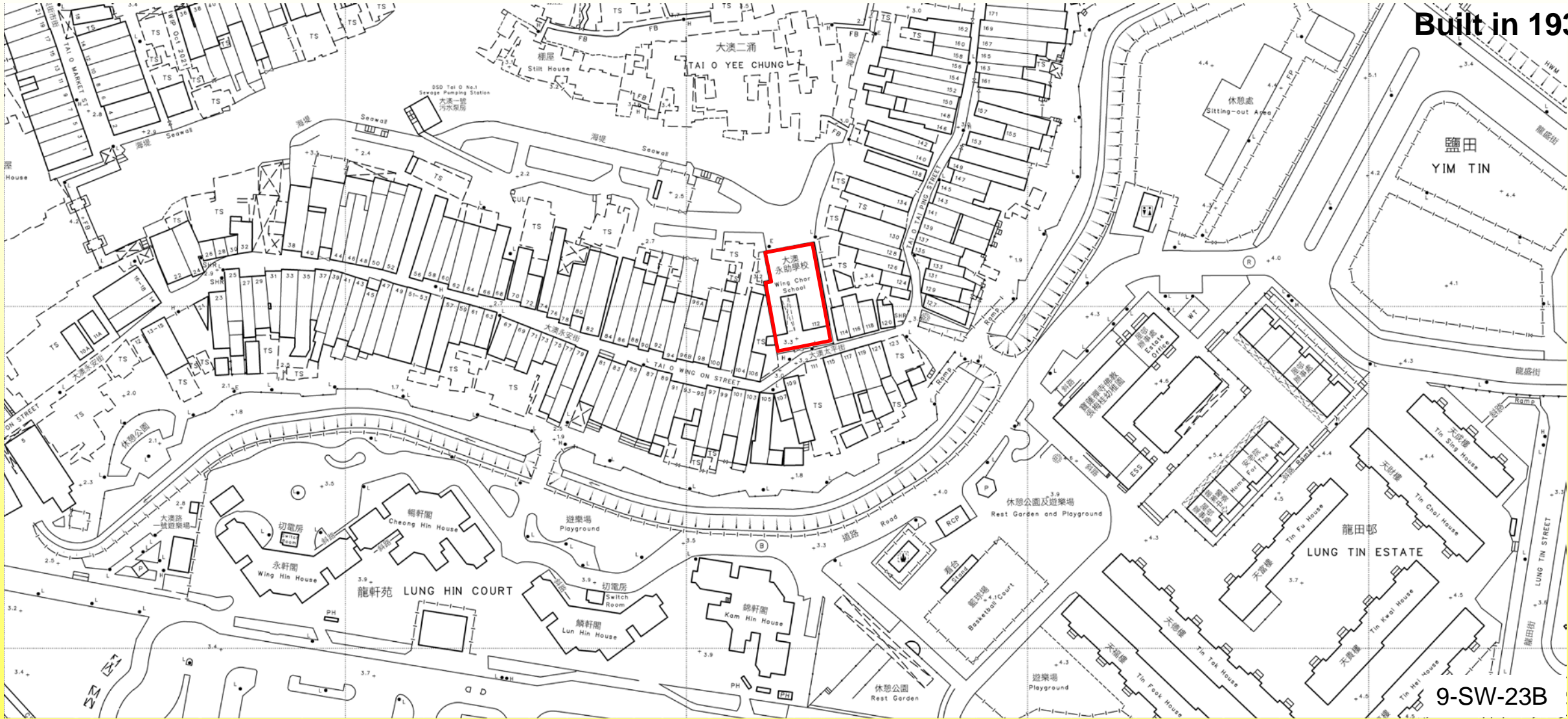
大嶼山大澳大澳太平街112號
永助聖母小堂

**Our Lady of Perpetual Help Chapel,
No. 112 Tai O Tai Ping Street, Tai O, Lantau Island**

大嶼山大澳大澳太平街112號永助聖母小堂 Our Lady of Perpetual Help Chapel, No. 112 Tai O Tai Ping Street, Tai O, Lantau Island

N389 擬議三級歷史建築 Proposed Grade 3

建於1937年
Built in 1937



9-SW-23B

只用以識別位置，並非確實範圍。For identification of location only, not exact boundary

大嶼山大澳大澳太平街112號永助聖母小堂
Our Lady of Perpetual Help Chapel, No. 112 Tai O Tai Ping Street, Tai O, Lantau Island

N389



正立面 Front Facade



背立面 Rear Elevation

大嶼山大澳大澳太平街112號永助聖母小堂
Our Lady of Perpetual Help Chapel, No. 112 Tai O Tai Ping Street, Tai O, Lantau Island

N389



教堂 Chapel



鐘樓及鐘 Bellcot and bell

大嶼山大澳大澳太平街112號永助聖母小堂
Our Lady of Perpetual Help Chapel, No. 112 Tai O Tai Ping Street, Tai O, Lantau Island

N389

地下
G/F



禮堂
Hall

辦公室 Office



飯堂 Dining Room

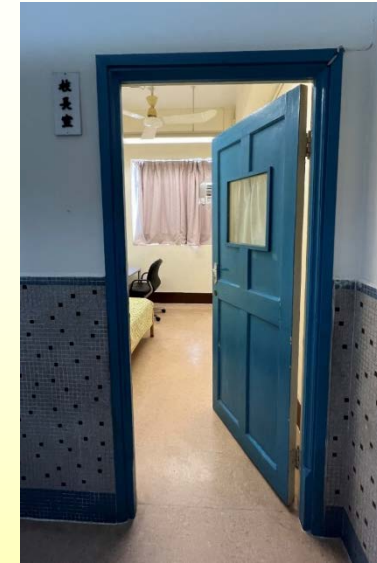


聖物部 Religious Gifts Shop 5

大嶼山大澳大澳太平街112號永助聖母小堂
Our Lady of Perpetual Help Chapel, No. 112 Tai O Tai Ping Street, Tai O, Lantau Island

N389

一樓
1/F



避靜參加者房間
Rooms for
retreatants

二樓
2/F



祈禱室
Prayers Room

活動室 Activity Room

儲物室 Store Room

N342

新界大埔深涌三王來朝小堂

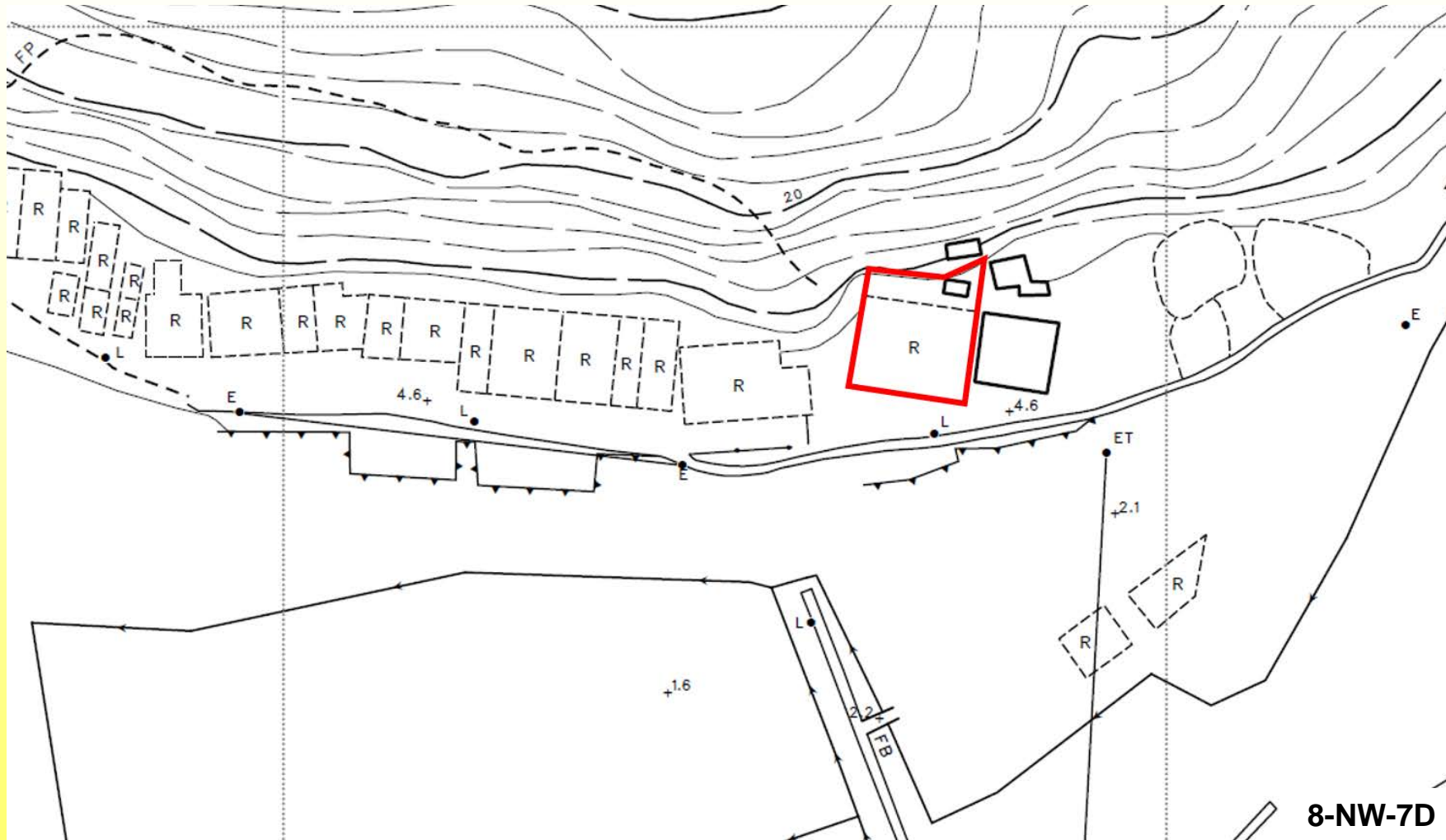
**Epiphany of Our Lord Chapel,
Sham Chung, Tai Po, N.T.**

新界大埔深涌三王來朝小堂

Epiphany of Our Lord Chapel, Sham Chung, Tai Po, N.T.

N342

建於1956年
Built in 1956



只用於識別位置，並非確實範圍 For identification of location only, not exact boundary

新界大埔深涌三王來朝小堂

Epiphany of Our Lord Chapel, Sham Chung, Tai Po, N.T.

N342



正面
Front Elevation

N344

新界大埔蛋家灣崇明學校

**Sung Ming School
Tan Ka Wan, Tai Po, N.T.**

新界大埔蛋家灣崇明學校

Sung Ming School, Tan Ka Wan, Tai Po, N.T.

N344

建於1959年
Built in 1959



只用於識別位置，並非確實範圍 For identification of location only, not exact boundary

N344

**新界大埔蛋家灣崇明學校
Sung Ming School, Tan Ka Wan, Tai Po, N.T.**



**正面
Front Elevation**